

Owner's Manual
LB22 BOLT ACTION RIFLE
Cal. .22LR, .22 WMR, .17 HMR



LB22 SEMI-AUTO RIFLE
Cal. .22LR



Congratulations on your purchase of the LB22 Small-bore rifle. With proper care and handling, it will give you many years of long, reliable service. These rifles are complete with iron sights and Picatinny rail. Both models come with three 10 rd. magazines.

We specifically disclaim any responsibility for damage or injury whatsoever, occurring as a result of the use of faulty, non-standard or remanufactured ammunition; any modifications or changes made to the firearm; improper use or unsafe handling of the firearm.

Always keep this manual with your firearm. Make sure you understand all the warnings, operation instructions and safety procedures. When you lend, give or sell the firearm, be sure this manual goes with it. You can get a copy of this manual from Century International Arms, Inc. on request.

**FIREARMS SAFETY IS THE SOLE RESPONSIBILITY OF THE SHOOTER.
ALWAYS TREAT ALL FIREARMS AS IF THEY WERE LOADED AT ALL TIMES!**



IMPORTANT!

READ ALL INSTRUCTIONS AND WARNINGS IN
THIS BOOKLET BEFORE USING THIS FIREARM.



IMPORTANT SAFETY MESSAGE

Children are attracted to and can operate firearms which can cause severe injuries or death. Prevent child access by always keeping gun locked, unloaded and separated from ammunition when not in use. If you keep a loaded firearm where a child obtains and improperly uses it, you may be fined or sent to prison.

Firearm Safety Depends on You

A gun is only as safe as the person operating it. You can never be overly careful when handling a firearm. Carelessness is often the cause of shooting accidents, such as failing to keep the muzzle pointed in a safe direction, not being sure of your target and what is behind it, failing to properly engage the safety, leaving ammunition in the chamber or using improper loads. Since a bullet can never be called back once fired, such errors in gun handling can result in the loss of life, severe injury or property damage thus, it is crucial for your safety and the safety of those around you that you learn the principles of safe gun handling and storage before you begin to use your new firearm. Be a safe shooter - please read this instruction book thoroughly even if this is not your first firearm purchase as not all firearms are the same. The first step in being a safe shooter is to learn the rules for the safe operation and handling of firearms. **There is nothing more important in gun handling than safety.**

Alcohol, Drugs and Guns Don't Mix. Make No Mistake About It!

Never handle firearms after consuming alcohol or taking drugs that can affect your judgment. Shoot sober! Alcohol, certain kinds of drugs and firearms don't mix. Safe firearms handling requires alertness and concentration on one's actions. You cannot handle a firearm safely after consuming alcohol. Never consume anything that can impair your judgment or physical coordination when handling a firearm. Never allow yourself to be distracted while handling a firearm.

THE TEN COMMANDMENTS OF FIREARM SAFETY

The Ten Commandments of Firearm Safety must be etched into your memory before you begin to handle firearms. These rules are intended to be understood and followed by all persons handling firearms in the field, on the range or at home. Please read, review and understand these rules before you begin to use or even take your new firearm out of its box. Remember, firearms safety depends on you! Memorizing these safety rules will help prevent gun accidents. Please study these safety rules before handling your firearm.

Commandment #1



Always Keep the Muzzle Pointed in a Safe Direction

This is the most basic and most important safety rule. A safe direction is one in which an accidental discharge will not cause injury to yourself, to others or property damage. This is particularly important when loading or unloading your firearm. Never point your gun at anything you do not intend to shoot. Treat every gun as if it were loaded at all times.

Commandment #2



Firearms Should Be Unloaded When Not Actually in Use

Firearms should only be loaded when you are in the field or on the target range or shooting area, ready to shoot. When not in use, firearms and ammunition should be secured in a safe place, separate from each other. Remember to unload your firearm completely so that there is no ammunition in the chamber or magazine. Before handling this or any firearm, or handing it to someone else,

visually check the chamber and magazine to ensure they do not contain ammunition. Always keep the gun's action open when not in use. Never assume a gun is unloaded - even if you were the last person to use it. Never cross a fence, climb a tree, wade through a stream or perform any awkward movement with a loaded gun. Never lean or place a firearm where it could fall. When in doubt, unload your gun! Never pull or push a loaded firearm toward yourself or another person. Never carry a loaded gun in a scabbard, a holster not being worn or a gun case - common sense prevails in gun safety!



Commandment #3

Don't Completely Rely on Your Gun's Safety

Treat every gun as though it could fire at any time, even if you are not applying pressure to the trigger. The "safety" on a firearm is a mechanical device which, like any such device, can become inoperable at the worst possible time and fail to function. By mistake, you may think the safety is "ON" when it actually is not. Or you may think your gun is unloaded when there is actually a round of ammunition in it. The safety serves as a supplement to proper gun handling but cannot serve as a substitute for common sense. Never handle a gun carelessly and assume that the gun won't fire just because "the safety is on." Never touch the firearm's trigger until you are ready to shoot. Keep your fingers away from the trigger when loading or unloading. Never pull the trigger when the safety is engaged or when the safety is positioned between the "SAFE" and "FIRE" positions. Never place your finger on the trigger unless you intend to fire.



Commandment #4

Be Sure of Your Target - And What Is Beyond It!

Once fired, a bullet (or shot charge) can never be called back; so before you shoot, know where the bullet is going and what it will strike. Be certain your shot will not injure someone or strike something beyond the target. Never fire in the direction of noise, a movement or at any object you cannot positively identify. Be aware that a .22 Short bullet can travel over 1 1/4 miles. A centerfire cartridge, such as the .30-06, can send its bullet over 3 miles. Shotgun pellets can travel 500 yards and a shotgun slug has a range of over a half mile. Make sure your shot has a safe backstop such as a hillside. Keep in mind how far the bullet will travel if it misses your intended target. Never shoot at a hard surface or water as the projectile may glance or ricochet in unpredictable direction. Once fired, a bullet can never be called back. You are responsible for your actions and judgment.



Commandment #5

Use the Correct Ammunition

Every firearm is designed to use a certain caliber or gauge of ammunition. It is important that you use the correct ammunition for your firearm. Information on the correct ammunition to use with your firearm appears in the firearm's instruction manual and the manufacturer's markings on the firearm itself. Use of the wrong ammunition, improperly reloaded ammunition or corroded ammunition can result in the destruction of the firearm, serious personal injury and/or death. Form the habit of examining every round of ammunition before you put it into your gun to ensure it is of the proper gauge or caliber and that it is in good condition.



Commandment #6

If Your Gun Fails to Fire When the Trigger Is Pulled, Handle With Care
If a cartridge or shell does not fire when the trigger is pulled, follow **Commandment #1** and keep the firearm's muzzle pointed in a safe direction. Keep the muzzle down range with the action closed and wait at least 30 seconds (to ensure that the ammunition is not delayed in firing) before carefully opening the action, unloading the firearm and safely disposing of the ammunition.



Commandment #7

Always Wear Eye and Ear Protection When Shooting
Exposure to shooting noise can permanently damage hearing. Flying debris, such as powder residue and ejected cartridge cases, can injure your eyes. Thus, it is only common sense to wear both eye protection (such as shooting glasses) and ear protection (such as a sound-muffling headset) whenever shooting. Also, wear eye protection when cleaning or disassembling your gun to ensure that cleaning solvent and tensioned parts (such as springs) do not come into contact with your eyes.



Commandment #8

Be Sure the Barrel Is Clear of Obstructions Before Shooting
Discharging a firearm with an obstruction in the barrel can result in **personal injury, property damage and/or death**. Before you load your firearm, check the chamber and magazine to ascertain that no ammunition is inside. Also, check the inside of the barrel (called the "bore") to ensure it is free of obstructions. Even a small amount of mud, snow or excess lubricating oil or grease in the bore can cause excessive pressures resulting in a bulged or burst barrel which can injure or kill the shooter and bystanders. It is a good idea to make a habit of cleaning the bore and checking for obstructions with a cleaning rod just before each shooting session. If the noise or recoil experienced upon firing seems low or weak, or something doesn't feel "right," cease firing immediately and carefully check to make sure that there is no obstruction in the barrel. Placing an undersized shell or cartridge into a gun (such as a 20 gauge shell in a shotgun chambered for 12 gauge ammunition) can result in the smaller round of ammunition falling into the barrel and acting as an obstruction. When a round is subsequently fired, the barrel may burst, causing injury to the shooter and bystanders. For reference, re-read Commandment #5.



Commandment #9

Do Not Alter or Modify Your Gun and Have It Serviced Regularly
Firearms are complex mechanisms that are designed to function properly in their original condition. Any alterations or changes made to a firearm after its manufacture can make the gun unsafe and will void its warranty. Do not jeopardize your safety or the safety of others by altering the trigger, mechanical safety or other mechanisms of your firearm. You should have your firearm periodically checked for proper functioning and serviced by a qualified gunsmith.



Commandment #10

Learn the Mechanical and Handling Characteristics of Your Firearm
Not all firearms operate the same way. The method of carrying, handling and operating firearms varies with the mechanical characteristics of each gun. Thus, you

should never handle any firearm until you become familiar with the safe handling, loading, unloading and carrying procedures for that particular firearm, as well as the rules for safe gun handling in general.



LEAD WARNING!

Discharging firearms in poorly ventilated areas, cleaning firearms or handling ammunition may result in exposure to lead and other substances known to cause birth defects, reproductive harm and other serious injuries. Have adequate ventilation at all times when shooting. Wash hands thoroughly after exposure.

Basics of Safe Gun Handling

1. Always keep the muzzle pointed in a safe direction.
2. Firearms should be unloaded when not actually in use.
3. Don't totally rely on your gun's safety.
4. Be sure of your target and what is beyond it.
5. Use the correct ammunition for your firearm.
6. If your gun fails to fire when the trigger is pulled, handle with care.
7. Always wear eye and ear protection when shooting and cleaning.
8. Be sure the barrel is clear of obstructions before shooting.
9. Don't alter or modify your firearm and have your firearm(s) serviced regularly.
10. Learn the mechanics and handling characteristics of the firearm you are using.

Safe gun handling depends on you! A safe shooter is a knowledgeable shooter.



WARNING! STOP SHOOTING IMMEDIATELY AND UNLOAD YOUR FIREARM if your firearm develops a mechanical malfunction; binding or stoppage, spitting powder/gas, a cartridge primer is punctured, a cartridge case is bulged or ruptured, or the sound on firing does not sound quite right. Do NOT try one more shot, but unload your firearm and take it and the ammunition to a qualified gunsmith or send it back to Century Arms for examination. Do not assume that the firearm is empty merely because you checked the chamber. You must also check the bore for any fired shot or wad jammed inside the barrel.



WARNING! Always ensure that the ammunition you are using is clean, undamaged and of the proper caliber before loading your shotgun. The manufacturer and distributor of this shotgun disclaim any liability for the use of remanufactured, reloaded or hand-loaded ammunition. Protect your investment in this fine firearm by using only factory fresh, quality ammunition. The use of improper caliber or low quality ammunition could result in injury, death and/or property damage upon firing. Remember, firearms safety depends on you!

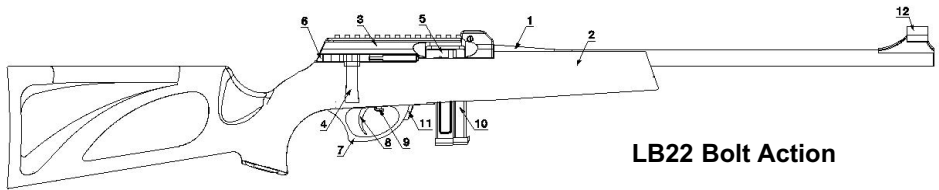
Specifications:

- Caliber: .22LR, .22 WMR and .17 HMR – bolt-action version, .22LR – semi-automatic version
- Barrel Length: 18"
- Overall Length: 36"
- Weight: 5.3 lbs. - bolt-action version
5.15 lbs. - semi-automatic version
- Magazine capacity: 10 rounds (both models come with three 10 rd. magazines)
- Operation: bolt-action or semi-automatic version

Illustration #1

Diagram showing major operational parts of the LB22 Bolt Action & Semi-Auto Rifle

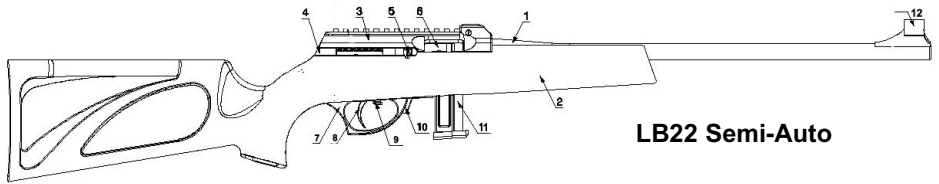
Study of this picture will aid you in understanding the instructions in this booklet.



LB22 Bolt Action

1. Barrel - receiver
2. Stock
3. Cover with Picatinny rail
4. Bolt handle
5. Bolt assembly
6. Receiver plug

7. Triggerguard
8. Trigger
9. Safety
10. Magazine
11. Magazine catch button
12. Front sight



LB22 Semi-Auto

1. Barrel - receiver
2. Stock
3. Cover with Picatinny rail
4. Receiver plug
5. Bolt handle
6. Bolt assembly

7. Triggerguard
8. Trigger
9. Safety
10. Magazine catch button
11. Magazine
12. Front sight

Safety: The safety lever is in the “SAFE” position when it is moved to the fully rearward towards the trigger. (See Illustration #2.) **NOTE:** When the safety lever is in its fully forward position in the triggerguard (towards the muzzle of the rifle), the gun is in the “FIRE” position. (See Illustration #3.)

Illustration #2



Illustration #3

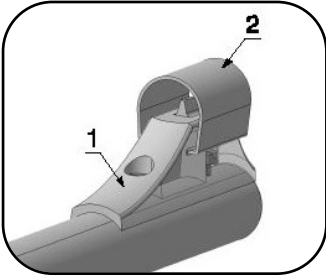


Sight Adjustment: Both LB22 rifles have iron sights, as well as Picatinny rail for mounting of optical sights.

Front sight is fixed. (See Illustration #4.)

- 1. Front sight.
- 2. Front sight protecting ring.

Illustration #4



Rear Sight:

- 1. Rear sight.
- 2. Windage adjustment screw.
- 3. Elevation adjustment screw.

Rear sight has divisions, three lines on the left and three on the right side. Windage is adjusted by turning the screw clockwise or counter clockwise. By turning the screw clockwise shots on target are moved to the right, when the screw is turned counter clockwise shots on target are moved to the left. (See Illustration #5, screw #2.)

Illustration #5

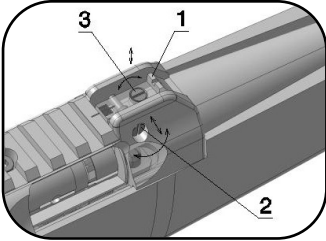


Table I shows the values of windage, on a target at the distance of 50m, when rear sight is moved by one line.

<u>Movement of the sight for windage</u>	<u>Moving of shot for windage 50m</u>
0.6mm (1 line)	70 mm (2.75")
1.2mm (2 lines)	140 mm (5.5")
1.8mm (3 lines)	210 mm (8.25")

Elevation is adjusted by turning the screw clockwise this will raise the rear sight and raise the impact on the target. By turning the screw counter clockwise you will lower the sight and lower the impact on the target. Each half turn of the screw raises or lowers the rear sight 105mm (4.1") at 50 meters.

To Load the Rifle

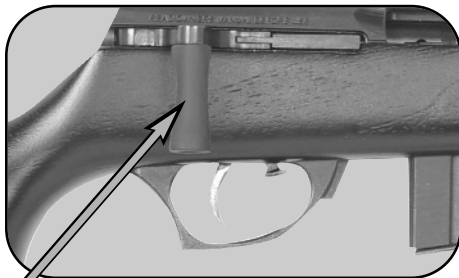


- WARNING!** Before loading, make sure the inside of the barrel is free of dirt or other obstructions.
- WARNING!** Always check each cartridge to ensure it is of the correct caliber and in good condition before loading the firearm.
- WARNING!** Never load a firearm indoors. An accidental discharge will cause property damage, serious injury and/or death! Never use live ammunition to function test your rifle indoors.
- WARNING!** Keep fingers away from the trigger while loading.
- WARNING!** Keep muzzle pointed in a safe direction.

Loading of LB22 Bolt Action Rifle:

1. Place the safety lever in the "SAFE" position. (See Illustration #2.)
2. Pull the bolt handle fully rearward. (See Illustration #6.)
3. Press the magazine release button and pull straight down on the magazine removing it from the rifle.
4. Load the magazine with the correct ammunition by pressing the cartridges one at a time into the magazine feed lips. When loading the rounds into the magazine ensure the base of the cartridge is in contact with the back of the magazine.
5. Insert the magazine into the magazine well. Push the magazine straight in, making sure it securely locks into place.
6. Move the bolt handle fully forward as the bolt moves forward it will strip a round from the magazine and insert it into the chamber, readying the rifle for firing.
7. Ensure the safety lever is in the safe position. (See Illustration #2.)
8. The rifle is now loaded and will fire if the safety is moved to the "FIRE" position.

Illustration #6



Bolt handle.



WARNING! The rifle is now loaded and will fire if the safety lever is moved to the "FIRE" position and the trigger is pulled! Handle with extreme caution and keep the muzzle (the end of the barrel) pointed in a safe direction!

Loading of LB22 Semi-Auto Rifle:

1. Place the safety lever in the "SAFE" position. (See Illustration #2.)
2. Press the magazine release button and pull straight down on the magazine removing it from the rifle.
3. Load the magazine with the correct ammunition by pressing the cartridges one at a time into the magazine feed lips. When loading the rounds into the magazine ensure the base of the cartridge is in contact with the back of the magazine.
4. Insert the magazine into the magazine well. Push the magazine straight in, making sure it securely locks into place.
5. Pull the bolt handle fully rearward and release it as the bolt moves forward it will strip a round from the magazine and insert it into the chamber, readying the rifle for firing.
6. Ensure the safety lever is in the safe position. (See Illustration #2.)
7. The rifle is now loaded and will fire if the safety is moved to the "FIRE" position.




WARNING! The rifle is now loaded and will fire if the safety lever is moved to the "FIRE" position and the trigger is pulled! Handle with extreme caution and keep the muzzle (the end of the barrel) pointed in a safe direction!

WARNING! Always unload your rifle immediately after use and prior to cleaning and storage to minimize the risk of an accidental discharge. If your rifle ever fails to fire keep it pointed at the target for at least 30 seconds in the event of a hangfire (slow ignition). If the round still does not fire, remove the magazine, eject and discard the bad round. Reload the rifle to resume firing.

To Fire the LB22 Bolt Action Rifle

1. Keeping the **10 Commandments of Firearm Safety** in mind, aim the rifle downrange at the target. When firing this rifle you may need to experiment with different shooting styles until you find the method which best suits your sporting activity. Remember to always fire the rifle in such a manner that you can maintain a safe muzzle direction at all times.
2. Disengage the safety lever by moving it to the "FIRE" position. (See Illustration #3.)
3. After aligning the sights on your target, place your finger inside the triggerguard and on the trigger.
4. Keep your sights aligned on the target. Slowly pull the trigger to fire the first round.
5. Remove finger from trigger; pull back on the bolt handle ejecting the spent casing.
6. Move the bolt handle forward which will strip a cartridge from the magazine and move it into the chamber.
7. The gun is ready to fire again. Repeat steps 3 through 6 until your finished shooting.
8. When firing is finished, place the safety lever in the "SAFE" position. (See Illustration #2.)

To Fire the LB22 Semi-Auto Rifle

1. Keeping the **10 Commandments of Firearm Safety** in mind, aim the rifle downrange at the target. When firing this rifle you may need to experiment with different shooting styles until you find the method which best suits your sporting activity. Remember to always fire the rifle in such a manner that you can maintain a safe muzzle direction at all times.
 2. Disengage the safety lever by moving it to the "FIRE" position. (See Illustration #3.)
 3. After aligning the sights on your target, place your finger inside the triggerguard and on the trigger.
 4. Keep your sights aligned on the target. Slowly pull the trigger to fire the first round.
 5. Being a semi-automatic rifle, the riflless action (its moving parts) will cycle after the first round is fired. As the bolt moves rearward, the extractor will pull the empty cartridge case from the chamber and eject it from the rifle. (Make sure there are no bystanders in close proximity on either side of the rifle who could be injured by the ejected cartridge case or gasses expelled from the rifle.)
-  **NOTE: If the trigger is pressed again, the rifle will fire! Keep the rifle pointed in a safe direction. Keep your fingers away from the muzzle when firing the gun.**

6. Firing may be continued in this manner until the magazine is empty.
7. When firing is finished, place the safety lever in the "SAFE" position. (See Illustration #2.)



WARNING! The rifle will fire if the magazine is removed and if the trigger is pulled when a cartridge is in the chamber.

WARNING! If dropped, any firearm could fire when there is a cartridge in the chamber and the safety lever is in the "FIRE" position.

Unloading the Rifle



WARNING! Keep muzzle pointed in a safe direction.

1. Move the safety lever to the "SAFE" position. (See Illustration #2.)
2. Remove the magazine from the rifle. Press the magazine release button, located in the front of the triggerguard. (See Illustration #7.) While holding the magazine release lever in, pull the magazine straight down and out of the gun.

- 3A. For the Bolt Action LB22 Rifle open the bolt to the fully rearward position, inspect the chamber to ensure it is empty.
- 3B. For the Semi-Automatic LB22 Rifle open the bolt fully to the rear. While holding the bolt open inspect the chamber to ensure it is empty.
4. Unload the magazine by sliding the cartridges forward and out of the magazine. Continue this until the magazine is empty.
5. Ensure the safety lever is in the safe position. (See Illustration #2.)

Illustration #7



Press the magazine catch button.

Field Stripping of LB22 Bolt Action



WARNING! Before beginning the disassembly process, check to ensure the rifle is not loaded. To do so, follow the procedures detailed in the **Unloading the Rifle** section on page 9.



WARNING! Wear eye protection, such as shooting glasses or goggles, when disassembling your firearm to protect your eyes from tensioned parts, such as springs that could be dislodged during disassembly.

1. Remove the magazine from the rifle. To do so, follow the procedures detailed in the **Unloading the Rifle** section on pages 9-10.
2. Inspect the rifle's chamber to ensure it does not contain a round by pulling the bolt fully rearward. This will cock the hammer and enable disassembly of the rifle. (See Illustration #8.) Inspect the chamber to ensure it is empty.
3. Unscrew the latch securing pin (See Illustration #9) and then rotate the rifle upside down so that the latch securing pin falls out. (See Illustration #10.)
4. Remove the receiver plug, (See Illustration #11) and then remove the bolt assembly. (See Illustration #12.)
5. Make sure you do not pull the trigger after the bolt is removed, as the hammer must be in the cocked position to reinstall the bolt!
- 6 Reverse the steps to reassemble. Please note to reinstall the bolt you will have to use a screwdriver to press down on the hammer, so that the bolt will pass over it. This must be done through the ejection port (See Illustration #13.)

Illustration #8



Illustration #9



Illustration #10



Illustration #11



Illustration #12



Illustration #13



Field Stripping of LB22 Semi-Auto

1. Remove the magazine from the rifle. To do so, follow the procedures detailed in the **Unloading the Rifle** section on page 9.
2. Check the rifle's chamber to ensure it does not contain a round by pulling the bolt fully rearward. this will cock the hammer and enable disassembly of the rifle. (See Illustration #8.) Inspect the chamber to ensure it is empty.
3. Unscrew the latch securing pin (See Illustration #14) and then rotate the rifle upside down so that the latch securing pin falls out. (See Illustration #15.) Before rotating the rifle you must press in on the receiver plug and hold it, to relieve the spring tension so that the latch securing pin will fall out. **CAUTION THIS PART IS UNDER SPRING TENSION.**
4. Remove the receiver plug (See Illustration #16) and then remove the recoil spring guide, recoil spring, and bolt. (See Illustrations #17 and #17A.) **CAUTION THIS PART IS UNDER SPRING TENSION.**
5. Make sure you do not pull the trigger after the bolt is removed, as the hammer must be in the cocked position to reinstall the bolt!

Illustration #14



Illustration #15



Illustration #16



Illustration #17

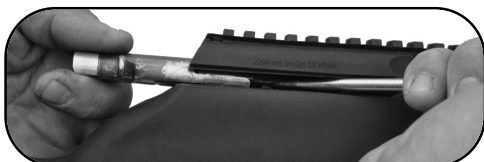


Illustration #17A



6. Reverse the steps to reassemble. Please note to reinstall the bolt you will have to use a screwdriver to press down on the hammer, so that the bolt will pass over it. This must be done through the ejection port. (See Illustration #17B.)

Illustration #17B



Cleaning the Rifle



WARNING! Before beginning the cleaning process, check to ensure the rifle is unloaded. (See the **Unloading the Rifle** section on page 9.)

WARNING! You should wear eye protection, such as shooting glasses or goggles, when cleaning your firearm to protect your eyes from tensioned parts, such as springs, that may become dislodged during disassembly.

1. Obtain a quality cleaning kit and thoroughly review the manufacturer's instructions.
2. Follow the rifle field stripping procedures. (See page 10 for the LB22 Bolt Action and page 11 for the LB22 Semi-Auto.)
3. To clean the barrel, select the correct caliber cleaning brush and attach it to a cleaning rod.
4. Dampen the brush with gun cleaning solvent and then push the brush through the barrel several times.
5. Remove the brush and attach a correctly sized cloth cleaning patch to the cleaning rod and push it through the barrel several times to remove loosened fouling.
6. Repeat this process with the brush and cleaning patches until a final patch comes out clean after swabbing the bore. Lightly oil the bore.
7. Remove shooting residue from the rifle's action parts and outer surfaces by wiping them with a soft cloth dabbed in gun cleaning solvent. Then be sure to remove all excess solvent and dry them.
8. Finally, wipe down all outer surfaces with a soft cloth dipped in a good quality gun oil.



WARNING! There may be sharp edges on parts of the firearm. Keep your fingers protected by wearing a pair of protective gloves when cleaning.

WARNING! You should wear eye protection, such as shooting glasses or goggles, when cleaning this rifle to protect your eyes from tensioned parts, such as springs, that could become dislodged during the cleaning procedures.

WARNING! Excessive use of cleaning solvents or lubricants can adversely affect your rifle's functioning. Wipe the inside of the barrel dry before firing and ensure that it is free of obstructions.

WARNING! Some cleaning solvents produce hazardous vapors. Read and follow the solvent manufacturer's cautions found on the product's package.

WARNING! Handling ammunition and cleaning firearms results in exposure to lead and other substances that can pose health risks. Wash your hands and face after firing your rifle or after cleaning it.

WARNING! This firearm should be checked periodically for worn or damaged parts by a competent gunsmith. This will help ensure its safe functioning and a long service life.

Cleaning Intervals

Always clean your rifle as soon as possible after firing to prevent buildup of shooting residue and to prevent corrosion from starting. To maintain your rifle in good working order, it should be cleaned regularly even if it has not been fired. If you live in a low-humidity area, this may mean doing a full clean once or twice a year; but if you live in a high-humidity area, it may be necessary to clean your rifle as often as once a week.

NOTE: *In freezing weather (below 32° F. or 0° C.), the use of a dry lubricant (instead of oil) for lubrication may work better.*

Storage

Your rifle should be thoroughly cleaned and lightly lubricated before being put away for storage. A light coating of good quality gun oil should be applied to all exposed surfaces. Remove all excess lubrication and use a cleaning rod and cleaning patch to make sure that the bore (the inside of the barrel) is dry and free of obstructions when you remove your rifle from storage and before firing it. CHECK TO ENSURE THAT YOUR RIFLE IS NOT LOADED BEFORE STORING IT. ALWAYS STORE FIREARMS AND AMMUNITION SEPARATE FROM EACH OTHER AND OUT OF REACH OF CHILDREN. ALWAYS SECURELY LOCK YOUR FIREARMS WHEN NOT IN USE. REFERENCE YOUR HOME STATE'S FIREARMS REGULATIONS FOR SAFE STORAGE OF FIREARMS AND AMMUNITION.

NOTE: *The use of reloaded, remanufactured, hand-loaded or other non-standard ammunition may result in damage to the rifle and injury or death to the shooter and/or bystanders. The manufacturer does not accept responsibility for malfunctions resulting from use of such ammunition.*



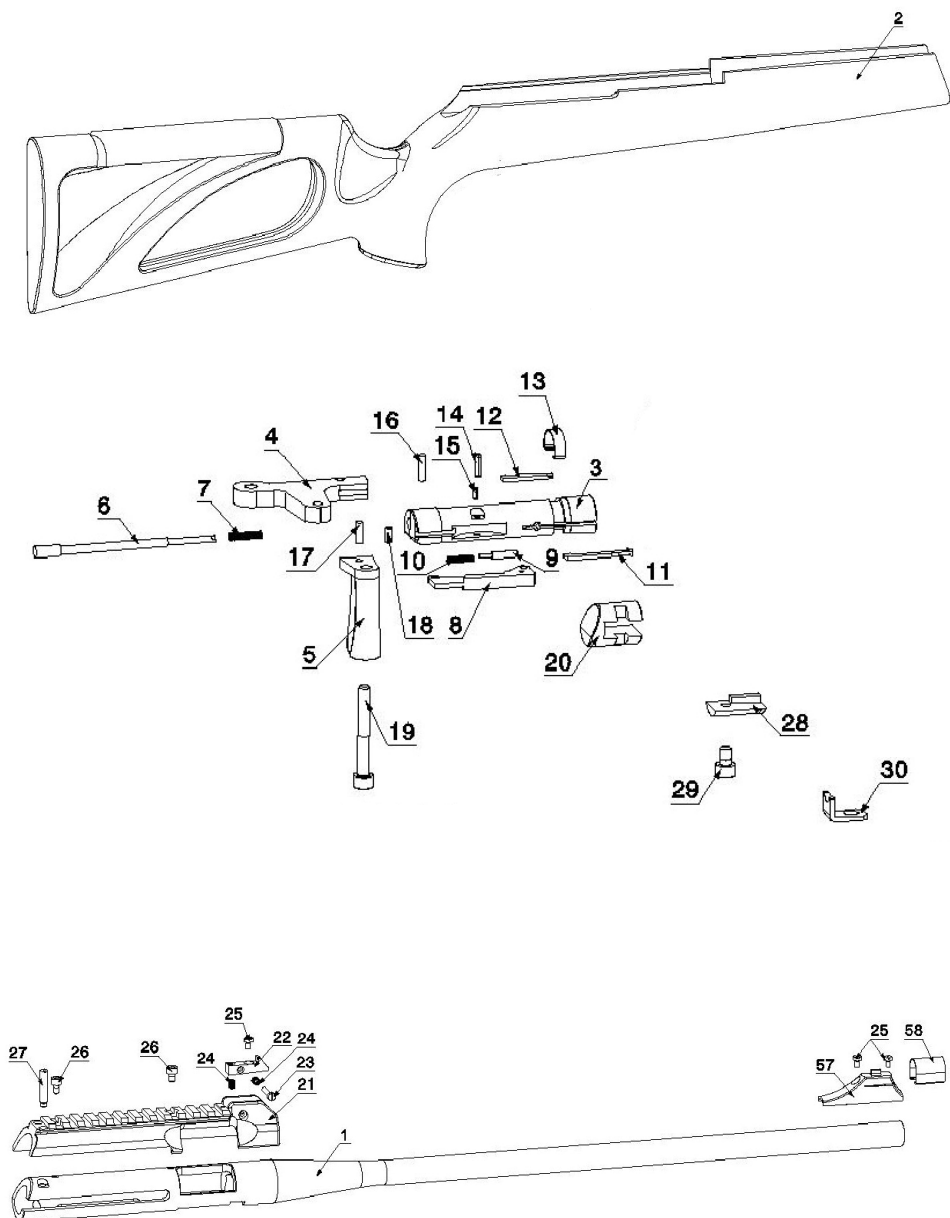
Lubrication Warning

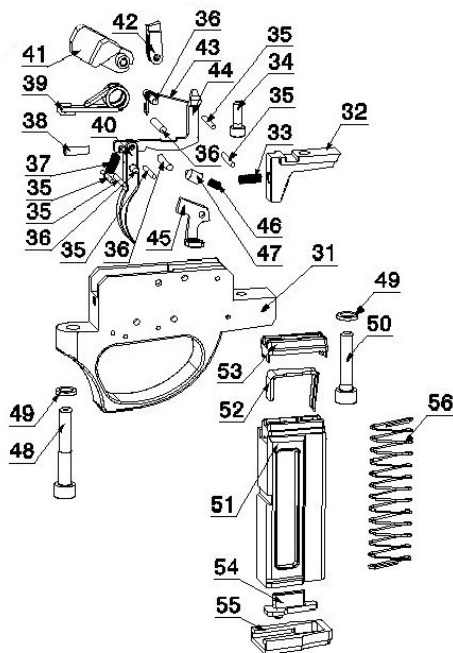
Firing a firearm with oil, grease or any other material even partially obstructing the bore may result in damage to the firearm and injury to the shooter and those nearby. Do not spray or apply lubricants directly on ammunition. If the powder charge of a cartridge is affected by the lubricant, it may not be ignited, but the energy from the primer may be sufficient to push the bullet into the bore where it may become lodged. Firing a subsequent bullet into the obstructed bore will damage the firearm and may cause injury to the shooter and those nearby. Use lubricants properly. You are responsible for the proper care and maintenance of your firearm and ammunition.



WARNING! Altering or modifying parts and/or internal safeties is dangerous and will void the warranty. This firearm was manufactured to perform properly with the original parts as designed. It is your duty to make sure any parts you buy are made for this firearm and are installed correctly and that neither the replacements nor originals are altered or changed. Your gun is a complex precision tool with many parts that must relate correctly to other parts in order for proper and safe operation. Putting a gun together wrong or with incorrect or modified parts can result in a damaged gun, danger, and injury or death to you and others through malfunction. Always have a qualified gunsmith work on your gun or at least check any work not performed by a gunsmith.

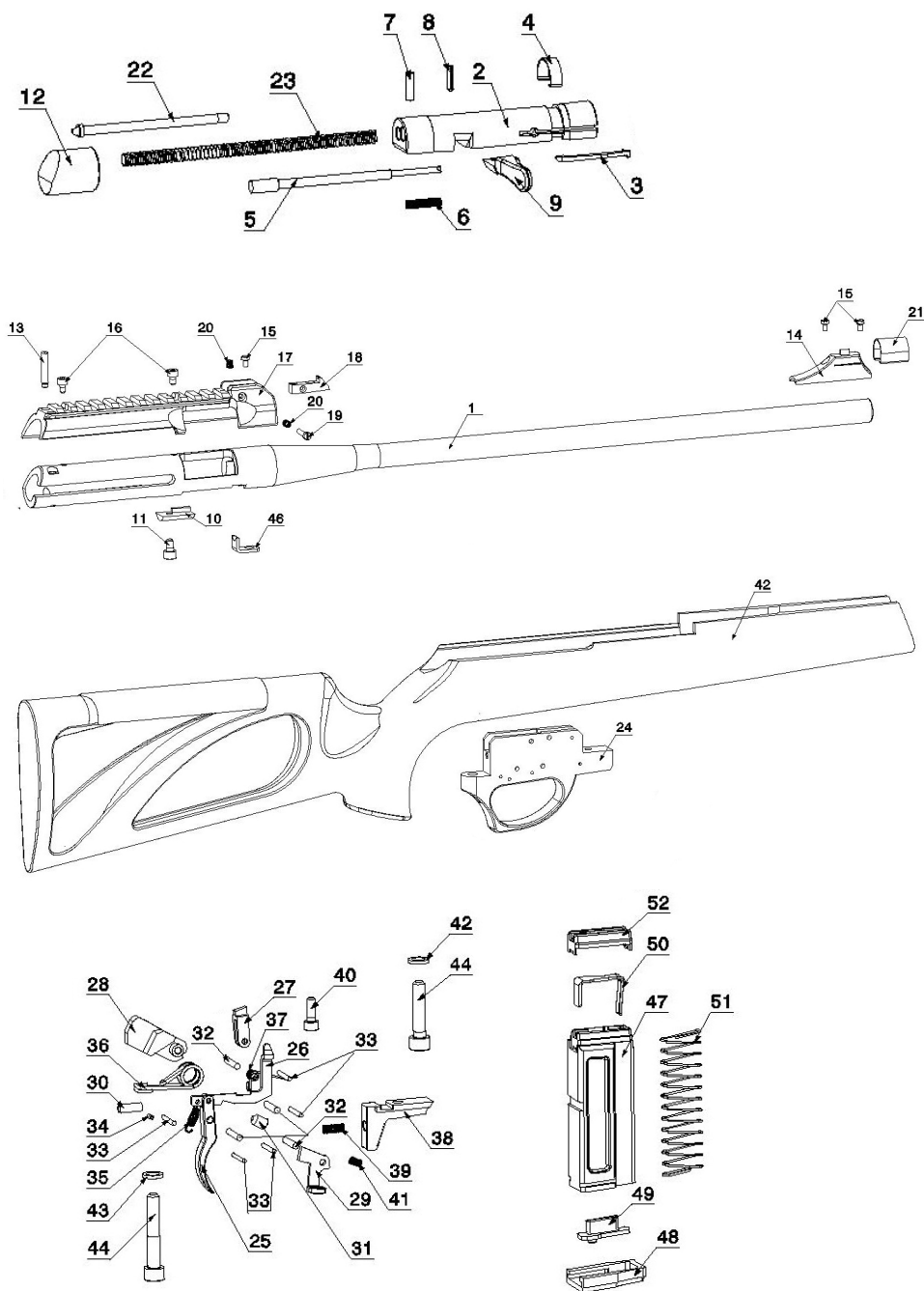
Illustration #18
LB22 Bolt Action Illustrated Parts Breakdown





1	BARREL RECEIVER .22LR, .22 WMR and .17 HMR	30	FEED RAMP 22LR (used only for this caliber)
2	STOCK .22LR insep. assy, and .22 WMR	31	TRIGGER GUARD .22LR and .22 WMR
3	BOLT .22LR and .22 WMR	32	MAGAZINE CATCH .22LR and .22 WMR
4	BOLT LEVER	33	MAGAZINE CATCH SPRING
5	BOLT HANDLE	34	TRIGGER MECHANISM SCREW M4x12
6	FIRING PIN	35	MAGAZINE BOTTOM PLATE AXLE
7	FIRING PIN SPRING	36	TRIGGER MECHANISM PIN
8	BOLT COCKING LEVER	37	TRIGGER SPRING
9	LATCH SECURING PIN	38	LOWER SCREW
10	LATCH SECURING PIN SPRING	39	HAMMER SPRING
11	EXTRACTOR, RIGHT	40	TRIGGER
12	EXTRACTOR, LEFT	41	HAMMER
13	EXTRACTOR SPRING	42	SEAR
14	ELASTIC PIN 2.5x10	43	SEAR SPRING
15	ELASTIC PIN 2x5	44	DISCONNECTOR
16	FIRING PIN AXLE	45	SAFETY
17	PIN	46	TRIGGER MECHANISM SPRING
18	LEVER PIN	47	SAFETY PLUG
19	HANDLE SCREW M5x40	48	REAR SCREW M6x37
20	RECEIVER PLUG	49	WASHER
21	RECEIVER COVER	50	TRIGGER GUARD SCREW M6x28
22	REAR SIGHT	51	MAGAZINE BODY .22LR and .22 WMR
23	WINDAGE ADJUSTMENT SCREW M3x16	52	FOLLOWER 22LR and 22WMR
24	SIGHT SPRING	53	MAGAZINE LIPS .22LR and .22 WMR
25	ELEVATION ADJUSTMENT SCREW M3x5	54	SPRING HOLDER .22LR and .22 WMR
26	RECEIVER COVER SCREW M4x6	55	MAGAZINE BOTTOM PLATE .22LR and .22 WMR
27	LATCH AXLE	56	FOLLOWER SPRING .22LR and .22 WMR
28	EJECTOR 22LR and 22 WMR	57	FRONT SIGHT
29	EJECTOR SCREW M5x8	58	FRONT SIGHT PROTECTING RING

Illustration #19 **LB22 Semi-Auto Rifle Illustrated Parts Breakdown**



1	BARREL RECEIVER .22LR
2	BOLT .22LR SA
3	EXTRACTOR, RIGHT
4	EXTRACTOR SPRING
5	FIRING PIN
6	FIRING PIN SPRING
7	FIRING PIN AXLE
8	ELASTIC PIN 2.5x10
9	BOLT HANDLE
10	EJECTOR 22LR SA
11	EJECTOR SCREW
12	SA RECEIVER PLUG
13	LATCH AXLE
14	FRONT SIGHT
15	ELEVATION ADJUSTMENT SCREW
16	RECEIVER COVER SCREW
17	RECEIVER COVER
18	REAR SIGHT
19	WINDAGE ADJUSTMENT SCREW
20	SIGHT SPRING
21	FRONT SIGHT PROTECTING RING
22	RECOIL SPRING GUIDE
23	RECOIL SPRING
24	TRIGGER GUARD .22LR
25	TRIGGER
26	DISCONNECTOR
27	SEAR
28	HAMMER
29	SAFETY
30	LOWER SCREW
31	SAFETY PLUG
32	TRIGGER MECHANISM PIN
33	TRIGGER MECHANISM BOTTOM AXLE
34	ELASTIC PIN 2x5
35	TRIGGER SPRING
36	HAMMER SPRING
37	SEAR SPRING
38	MAGAZINE CATCH 22LR
39	MAGAZINE CATCH SPRING
40	TRIGGER MECHANISM SCREW M4x12
41	TRIGGER MECHANISM SPRING
42	STOCK 22LR insep. assy.
43	WASHER
44	REAR SCREW M6x37
45	TRIGGER GUARD SCREW M6x28
46	FEED RAMP
47	MAGAZINE BODY .22LR
48	MAGAZINE BOTTOM PLATE .22LR
49	SPRING HOLDER .22LR
50	FOLLOWER .22LR
51	FOLLOWER SPRING .22LR
52	MAGAZINE LIPS .22LR

Limited Parts Replacement Warranty

The LB22 is warranted to be free of manufacturing defects for a period of one year from the original date of purchase of the LB22 from a federally licensed firearms retailer. The warranty only applies to the first retail purchaser and is not transferrable or assignable. Proof of purchase must be presented at the time any warranty claim is made. This is a one year warranty limited to replacement of improperly manufactured parts. Any alternations, modifications, abuse, misuse or discharge of poor quality, corrosive or defective ammunition voids the warranty.

Return Authorization

To obtain warranty service, contact us at 1.800.527.1252 to get a return authorization. Please that a return authorization must be obtained prior to returning the firearm.

Century International Arms, Inc.
236 Bryce Boulevard
Fairfax, Vermont 05454
USA
www.centuryarms.com

This image shows a single sheet of white paper with horizontal ruling lines. The lines are evenly spaced and run across the width of the page. There are no margins, text, or other markings on the paper.

LB22 Bolt Action Rifle, Cal. .22LR, .22 WMR, & .17 HMR



LB22 Semi-Auto Rifle, Cal. .22LR



Distributed by:
Century International Arms, Inc.
236 Bryce Boulevard, Fairfax, VT 05454
www.centuryarms.com
Sales Tel: 1.800.527.1252 - 1.561.265.4530
Sales Fax: 1.561.265.4520

Manufactured by:
Zastava