

CZ-USA

PROTECT • HUNT • COMPETE

**INSTRUCTION MANUAL FOR
PUMP ACTION SHOTGUNS**

PUMP ACTION SHOTGUN

READ THE INSTRUCTIONS AND WARNINGS IN THIS MANUAL CAREFULLY BEFORE USING THIS FIREARM

FIREARMS SAFETY

We believe that safe firearms handling is the most important consideration of anyone who uses firearms and ammunition. Please take a few minutes to thoroughly read and understand this instruction manual included with this shotgun.

You should completely understand this manual before you practice loading, unloading and firing with live ammunition.

REMEMBER, FIREARMS SAFETY DOES DEPEND ON YOU!

WARNING

Take note of the following warnings on gun handling before attempting to use your shotgun:

- Don't rely on your gun's safety. Treat every gun as if it were loaded and ready to fire.
- Never cross a fence, climb a tree or jump a ditch with a loaded gun.
- Never load or carry a loaded gun until you are ready to use it.
- Watch your muzzle so the other fellow doesn't have to.
- Keep guns and ammunition separately and in locked storage.
- Know the range of your gun.
- Don't shoot unless absolutely sure of your target and what is beyond it.

Always wear eye and ear protection when shooting.

Always be sure the barrel is clear of obstructions, and only carry ammunition specifically intended for the gun you are using.

- Do not alter or modify your gun.
- Have gun checked regularly by a competent gunsmith.

UNPACKING YOUR SHOTGUN

When you remove the shotgun from its box, you will see the 2 major components, the barrel and the shotgun. (Fig 1) Your shotgun comes with a choke tube installed in the barrel along with a choke tube wrench if it is equipped with mobile chokes. A magazine capacity plug should be installed into the magazine or separately located. You should also have an instruction manual in the package.

MANUAL SAFETY

Your shotgun is equipped with a manual trigger block safety button located in the trigger guard, just behind the trigger. (Fig 2) When the button is pushed from the left side of the receiver, protruding to the right side, the trigger is blocked and the safety is on.

When the button is pushed from the right side of the receiver, protruding to the left side, you will see a red circle on the safety button indicating the safety is off and the shotgun is in an unsafe condition, ready to fire if the trigger is pulled, as shown in (Fig 3). The directions are opposite for left hand shotguns.

CAUTION

The manual safety of your shotgun should always be on except for when you are ready to pull the trigger and fire the shotgun. This will help insure that no accidental discharges take place. You should only have the safety off, and be able to see the red line on the left side of the receiver, when you are ready to shoot. (The directions are opposite for left hand shotguns.)

DIRECTIONS FOR ASSEMBLY

WARNING: Read and understand all instruction and warnings in this manual BEFORE using this shotgun.

1. Remove the stock/action from the box and remove the plastic covering (Fig 1). Remove the barrel from inside the box and remove its plastic covering and check to make sure the barrel is clear.
2. Remove the magazine cap. (Fig 4)
3. Move the forend reward slightly, so that the bolt is in the locked closed position. (Fig 5).
4. Insert the barrel extension into the receiver, making sure that the barrel extension is sliding between the bolt and top of the receiver and that the barrel collar is surrounding the magazine tube. Push the barrel back into the receiver until the barrel extension is flush with the front of the receiver. (Fig 6-7)
5. With the barrel properly inserted in the receiver, you may now insert the capacity limiter in the magazine tube, if it is necessary to limit the cartridge capacity of the shotgun. 1. Without the limiter, the capacity of the tube is five 2-3/4" shells or four 3" magnum or three 3-1/2"

PUMP ACTION SHOTGUN

magnum shells. With the limiter inserted, the capacity of the magazine tube is restricted to two shells of any size. (Fig 25-26)

6.Reattach the magazine cap, screwing it down as tightly as possible. (Fig 8)

7.The shotgun is now fully assembled.

Your shotgun is now ready for loading, after you familiarize yourself with the operation of the manual trigger block safety.

CAUTION

Do not load your shotgun until you are ready to use it and unload it immediately after you have finished shooting. Always carry your shotgun with the safety engaged. The user of this shotgun, and all firearms, should never depend on the manual safety, or any other mechanical device, to make a firearm completely safe. It is your responsibility to always keep the muzzle of your firearm pointed in a safe direction.

LOADING

When loading, keep the safety on and the muzzle pointed in a safe direction. To load the magazine tube:

- 1.Turn the shotgun upside down. Make sure the action is locked closed.
- 2.Place a shotshell, of the proper gauge, onto the carrier. (Fig 11)
- 3.Slide the shell up and into the magazine tube. Two shells can fit into the magazine tube.
- 4.Cycle the action by first pulling the forend toward the action and then pushing the forend forward until the action locks closed. Your shotgun is now in battery. (Fig 12)

You can increase the shot capacity of your shotgun by adding an additional shotshell into the magazine following the procedures above.

FIRING

WARNING: Read and understand all instructions and warnings in this manual BEFORE using this shotgun. It is important to learn the parts of your shotgun and their functions before using this firearm.

Keep the muzzle pointed at your target. Be aware of what is behind or around your target as well as the target itself. After you have cycled the action and loaded a shell into your pump shotgun, the gun is ready to fire. Depress the safety so that it is flush with the right side of the trigger guard and has been disengaged. Pull the trigger and the shotgun will fire. Cycle the action to eject the spent shell and reload another shell.

UNLOADING

WARNING: Read and understand all instructions and warnings in this manual BEFORE using this shotgun. Always keep the shotgun pointed in a safe direction.

If you have your shotgun loaded and are ready to fire, but change your mind, first engage the safety by pushing the safety button flush with the left side of the trigger guard so that the red ring is no longer visible. Push the action release inward to unlock the action and slide the forend toward the action. (Fig 13) If you want to unload without pulling the bolt handle; turn your gun and press the carrier, press the latch which is the right side of the receiver. The shell, which had been loaded, will eject. (Fig 14) Unload the shells by pressing the latch for every one. Be careful not to allow the

shot shell to eject onto a hard surface, which may cause the shell to discharge.

INTERCHANGEABLE CHOKE TUBES

Your pump action shotgun comes with one interchangeable multi-choke tube. The lines on the top of the tube can identify the choke tube constriction. (Fig 15) The constrictions are as follows:

Name	Constriction Inch	Notches	Markings
Cylinder	.000"	5	C
Improved Cylinder	.010"	4	IC
Modified	.020"	3	M
Improved Modified	.025"	2	IM
Full	.035"	1	F
X Full	.040"	0	XF

Other multi-choke tubes are available from your CZ-USA dealer. To change the choke tubes, simply use the special spanning tool provided. Insert the spanning tool into the recessed space of the tube and unscrew. Insert the desired choke tube and seat with the spanning tool in the reverse direction. (Fig 16)

CZ-USA recommends the following choke tube selections: For steel shoot, modified or improved cylinder. For buckshot, improved cylinder or cylinder chokes. For slugs, use a cylinder.

WARNING: If your shotgun is equipped for multi-choke tubes, never fire your shotgun without a choke tube installed! This could damage the choke tube threads on the inside of the barrels.

DISASSEMBLY

WARNING: Read and understand all instructions and warnings in this manual BEFORE using this shotgun. Always make sure the shotgun is completely unloaded before disassembly. Make sure your shotgun is UNLOADED before beginning disassembly.

At regular intervals or when the shotgun has been exposed to sand, water or other adverse conditions, disassemble, clean and oil it. To disassemble your shotgun;

- 1.Remove the magazine cap. (Fig 17)
- 2.Remove the barrel by pulling it out of the action. (Fig 18)
- 3.Remove the forend and action bar assembly. (Fig 19)
- 4.Remove the block from the action bar assembly. (Fig 20-21)
- 5.Remove the trigger group by first removing the two retaining pins by using a punch to drive the pins out of the receiver. (Fig 22)
- 6.Once the retaining pins have been removed, the entire trigger group can be removed by pulling down on the trigger guard. (Fig 23)

You can remove the magazine tube plug for cleaning by:

- 1.Taking a screwdriver to the mag tube plug. (Fig 25)
- 2.Push down.
- 3.Turn the mag plunger 1/8 turn clockwise and carefully release. (Fig 26)

WARNING: The magazine tube is under spring pressure! Further disassembly is not recommended and not necessary for regular maintenance.

MAGAZINE CAPACITY PLUG

Your shotgun is supplied with a plug to limit the capacity of cartridges in the magazine tube. Your country's regulations may not require this plug to be used so it may be removed.

When the barrel has been removed from the shotgun, insert a large bladed screwdriver into the hole in the magazine spring retainer.(Fig 25)

While pushing down on the spring retainer with the screwdriver, and rotating in a clockwise direction approximately 1/4 turn, the retainer will move to a position where the cutout in the retainer will align with a detent in the magazine tube, enabling the retainer to come out of the magazine tube. Be very careful at this point, as the retainer is holding a spring inside of the magazine tube and the spring is under tension.

Slowly pull back on the screwdriver to allow the magazine spring to push the retainer and capacity plug out of the magazine tube. (Fig 26)

Remove the plastic plug from the tube and reassemble the retainer plug back into the magazine tube. Be careful, as the spring will be under tension. Align the cutout in the retainer plug with the detent on the end of the magazine tube, push the plug into the tube and rotate it in counter clockwise direction approximately 1/4 turn, and slowly allow the retainer to return to its stop. This will lock the retainer plug firmly in the magazine tube.

Note: Your shotgun has now been completely disassembled. No further disassembly of your shotgun is necessary for routine maintenance and cleaning. Our service department or a competent gunsmith should only perform any further disassembly.

An exploded view of the disassembled shotgun is shown in (Fig 27).

Note: Photographs shown in this manual may not be from the exact model that you have but the instructions will apply to the model you have.

Gauge & Chamber		Shells can be used					
12/76	12Ga 3"	12/70	12Ga 2 3/4"	12/76	12Ga 3"		
12/89	12Ga 3 1/2"	12/70	12Ga 2 3/4"	12/76	12Ga 3"	12/89	12Ga 3 1/2"
20/76	20Ga 3"	20/70	20Ga 2 3/4"	20/76	20Ga 3"		
28/70	28Ga 2 3/4"	28/70	28Ga 2 3/4"				

Do not use a cartridge that is longer than the maximum cartridge length that is stamped on the barrel.

PUMP ACTION SHOTGUN

AMMUNITION

Use only quality ammunition specifically designed for your gauge of shotgun. Each barrel is marked with the size of shot-shell it will accept. If the barrel is marked 3" that means your shotgun will accept 3" shotshells as well as 2-3/4" shotshells. If your barrel is marked 2-3/4" do not attempt to load any size other than 2-3/4" shotshells.

All CZ-USA shotguns will accommodate steel shot. However, steel shot should not be used with any choke tighter than a modified choke (flush mount or external). Do not use steel shot with improved modified, full or extra full choke tubes (flush mount or external).

WARNING

The accidental loading and discharge of shells of the wrong gauge in your gun can result in damage to your gun and injury to the shooter or others. To be safe, carry only the proper gauge ammunition with you when shooting.

CLEANING AND STORAGE

Periodically, clean the bore with proper cleaning equipment. Oil all metal surfaces lightly with high quality gun oil. Never pour oil into any inside mechanisms.

If you will be storing your shotgun for long periods of time, apply gun grease to all metal parts, store the shotgun in a dry, and secure area. When you clean the shotgun, make sure the muzzle is not plugged with any heavy grease that would cause a barrel obstruction.

PARTS & SERVICE

To order parts, please call, write or email us for availability and pricing. To assist you better, please be prepared to provide your model, gauge, and serial number.

Send all parts correspondence to:

NOTE

To return firearms for warranty repairs, please pack your shotgun securely in the original packaging, if possible. Write us a note with the shotgun including a detailed description of the problem you are experiencing.

Please include your proof of original retail purchase.

NOTE

NOTE

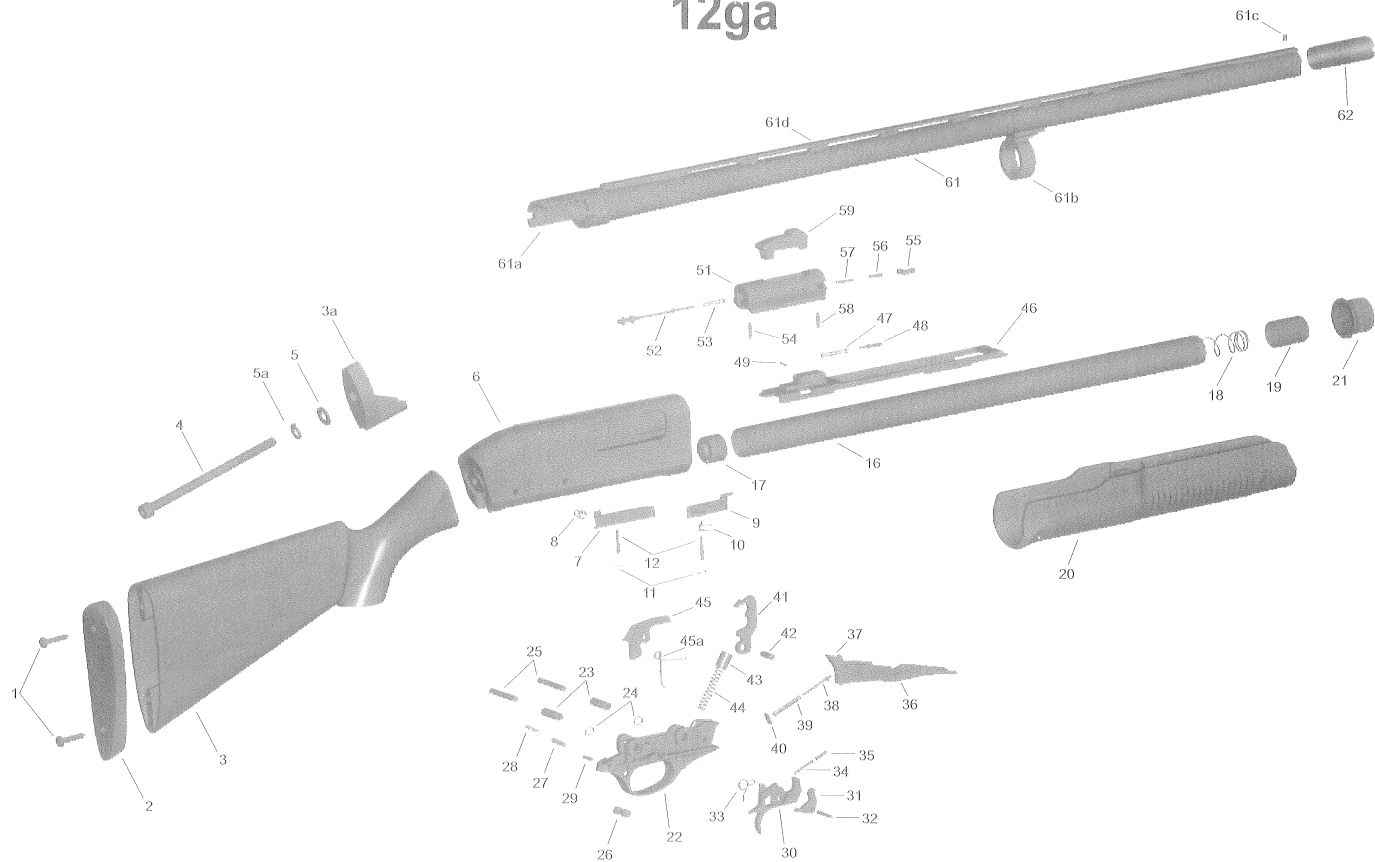
NOTE

CZ-USA Pump Shotgun Part List

12ga

No	Part Name	No	Part Name	No	Part Name
1	Recoil Pad Screw	24	Trigger Plate Pin Detent Spring	45a	Release Latch Spring
2	Recoil Pad	25	Trigger Plate Pin	46	Action Bar
3	Stock	26	Safety Button	47	Action Bar Plunger Spring
3a	Stock Inner Frame	27	Safety Button Detent Pin	48	Action Bar Plunger
4	Stock Screw	28	Safety Button Spring	49	Action Bar Plunger Retaining Pin
5	Stock Screw Washer	29	Safety Spring Retaining Pin	51	Breech Bolt
5a	Washer Stopper	30	Trigger	52	Firing Pin
6	Receiver	31	Trigger Sear	53	Firing Pin Spring
7	Latch	32	Trigger Pin	54	Firing Pin Retaining Pin
8	Latch Spring	33	Trigger Spring	55	Extractor
9	Interceptor Latch	34	Trigger Sear Detent Spring	56	Extractor Plunger
10	Interceptor Latch Spring	35	Trigger Sear Detent Pin	57	Extractor Spring
11	Latch Pin Detent Spring	36	Carrier	58	Extractor Pin
12	Latch Pin	37	Carrier Dog	59	Locking Block
16	Magazine Tube	38	Carrier Dog Follower	61	Barrel
17	Magazine Follower	39	Carrier Dog Follower Spring	61a	Barrel Rear Part
18	Magazine Spring	40	Carrier Dog Follower Plate	61b	Barrel Collar
19	Magazine Spring Retainer	41	Hammer	61c	Front Sight
20	Forend	42	Hammer Pin	61d	Barrel Bridge
21	Magazine Cap	43	Hammer Plunger	62	Mobile Choke
22	Trigger Plate	44	Hammer Spring		
23	Trigger Plate Pin Bushing	45	Action Release		

CZ-USA Pump Shotgun Part Diagram 12ga

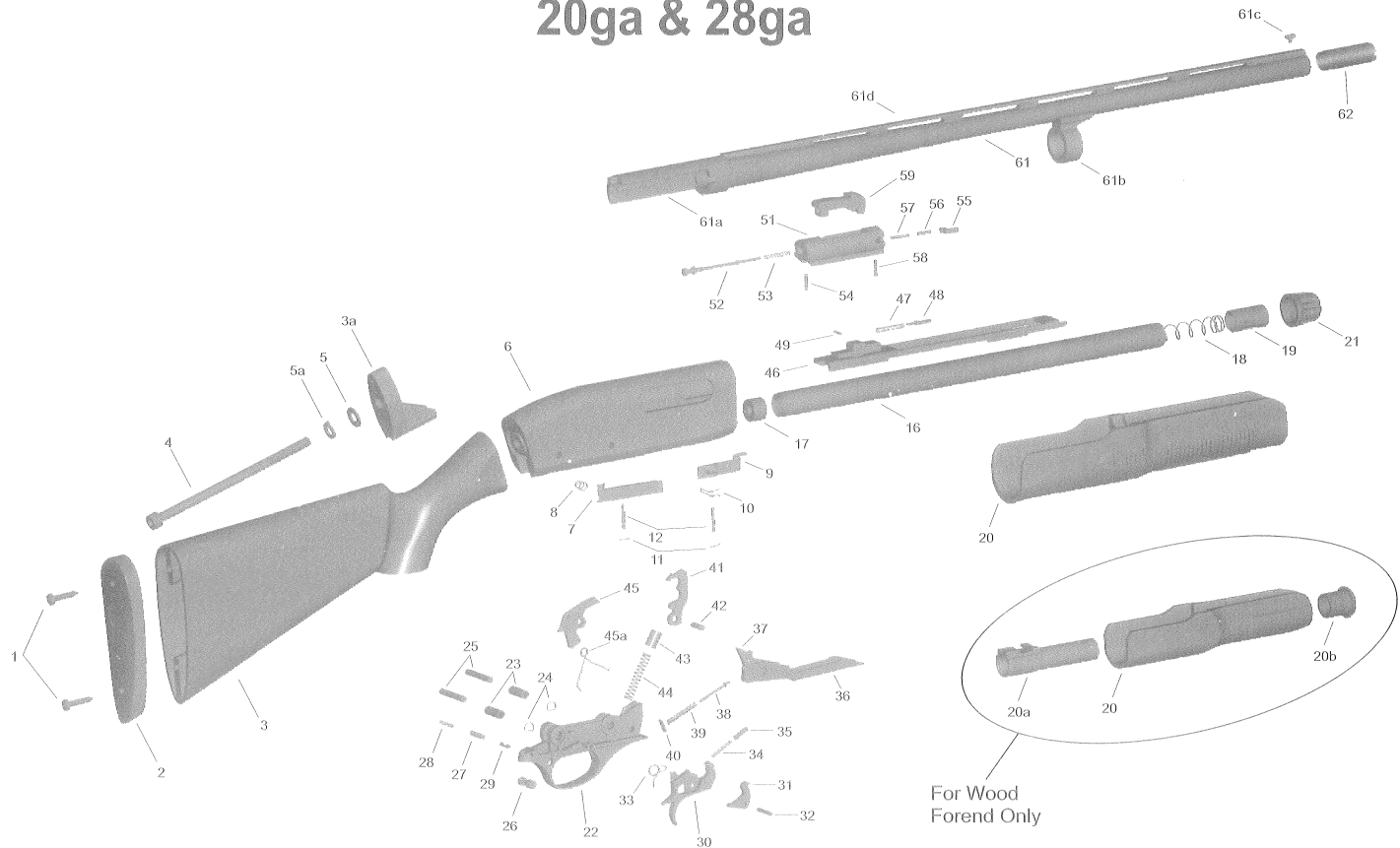


CZ-USA Pump Shotgun Part List

20ga & 28ga

No	Part Name	No	Part Name	No	Part Name
1	Recoil Pad Screw	22	Trigger Plate	44	Hammer Spring
2	Recoil Pad	23	Trigger Plate Pin Bushing	45	Action Release
3	Stock	24	Trigger Plate Pin Detent Spring	45a	Release Latch Spring
3a	Stock Inner Frame	25	Trigger Plate Pin	46	Action Bar
4	Stock Screw	26	Safety Button	47	Action Bar Plunger Spring
5	Stock Screw Washer	27	Safety Button Detent Pin	48	Action Bar Plunger
5a	Washer Stopper	28	Safety Button Spring	49	Action Bar Plunger Retaining Pin
6	Receiver	29	Safety Spring Retaining Pin	51	Breech Bolt
7	Latch	30	Trigger	52	Firing Pin
8	Latch Spring	31	Trigger Sear	53	Firing Pin Spring
9	Interceptor Latch	32	Trigger Pin	54	Firing Pin Retaining Pin
10	Interceptor Latch Spring	33	Trigger Spring	55	Extractor
11	Latch Pin Detent Spring	34	Trigger Sear Detent Spring	56	Extractor Plunger
12	Latch Pin	35	Trigger Sear Detent Pin	57	Extractor Spring
16	Magazine Tube	36	Carrier	58	Extractor Pin
17	Magazine Follower	37	Carrier Dog	59	Locking Block
18	Magazine Spring	38	Carrier Dog Follower	61	Barrel
19	Magazine Spring Retainer	39	Carrier Dog Follower Spring	61a	Barrel Rear Part
20	Forend	40	Carrier Dog Follower Plate	61b	Barrel Collar
20a	Action Bar Sleeve (For Wood)	41	Hammer	61c	Front Sight
20b	Action Bar Sleeve Nut (Forend Only)	42	Hammer Pin	61d	Barrel Bridge
21	Magazine Cap	43	Hammer Plunger	62	Mobile Choke

CZ-USA Pump Shotgun Part Diagram 20ga & 28ga

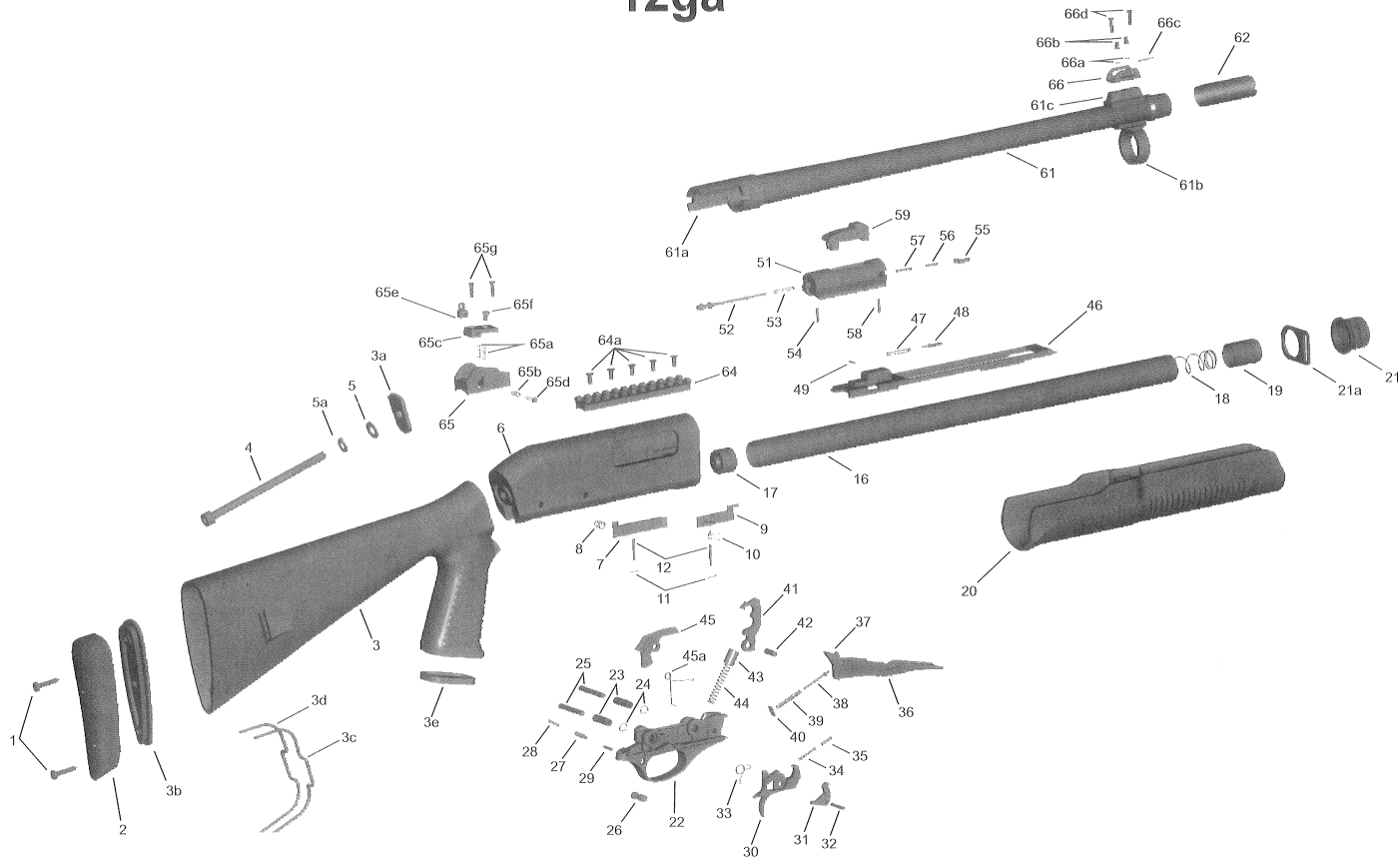


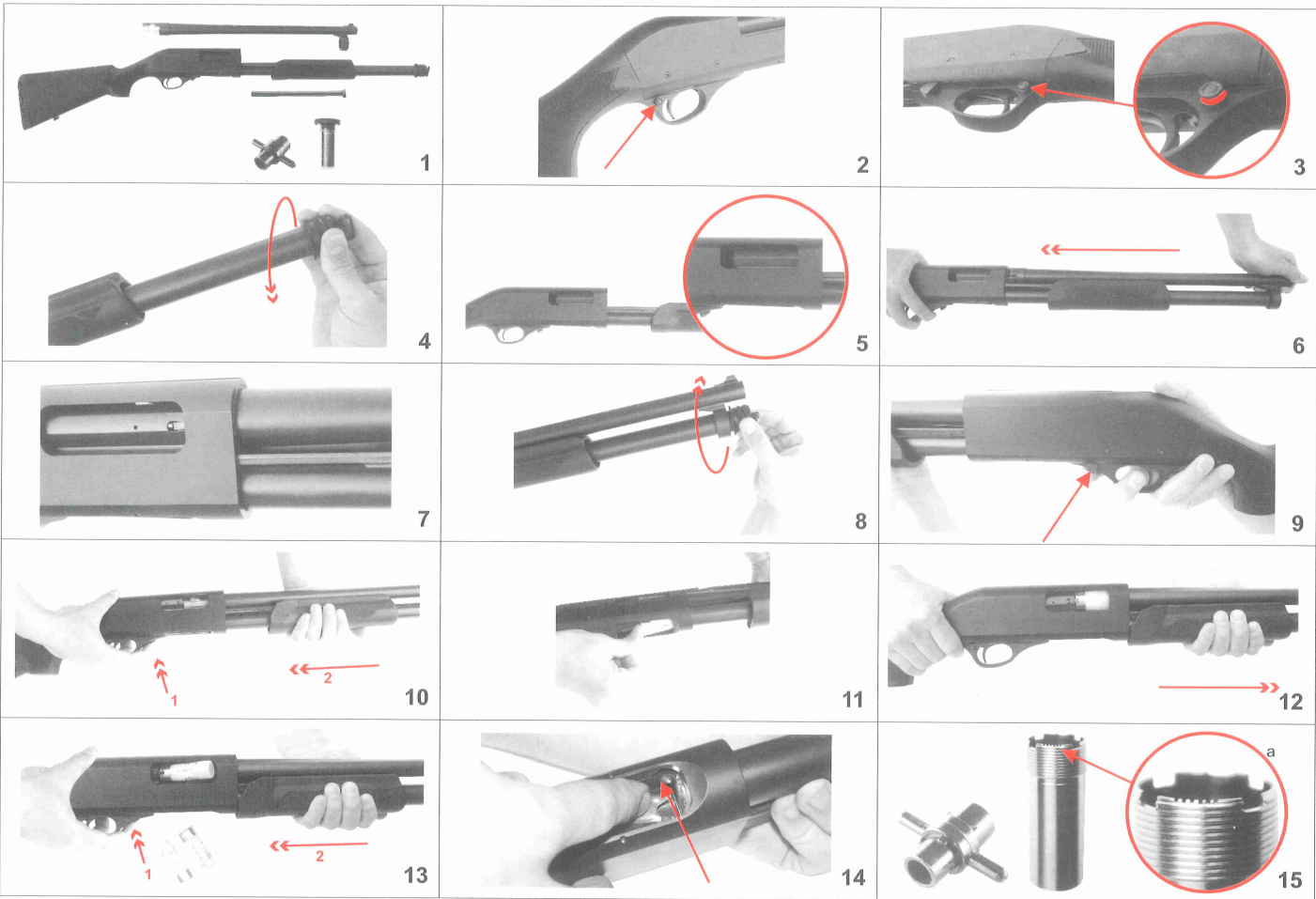
CZ-USA Pump Shotgun Part List

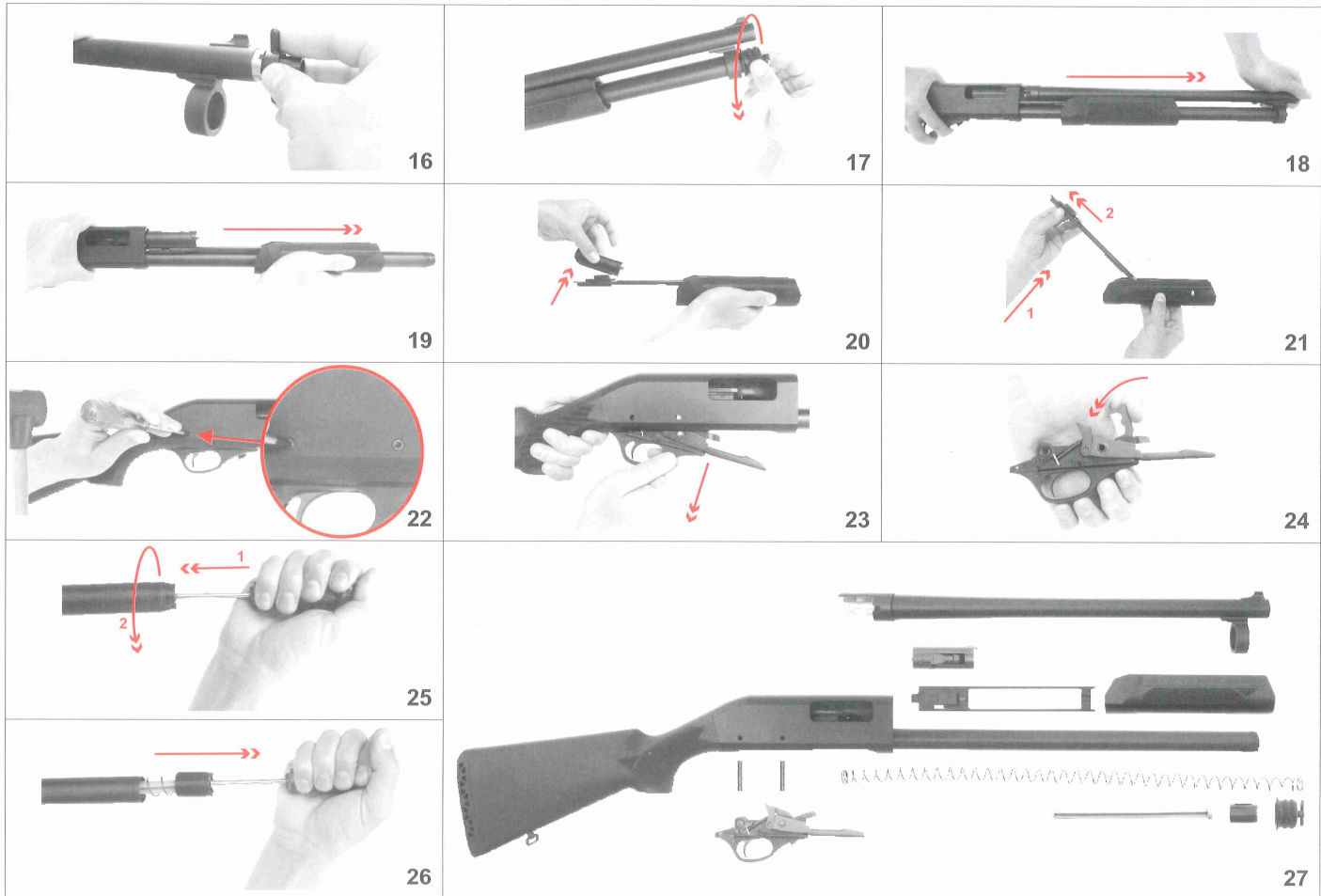
12ga

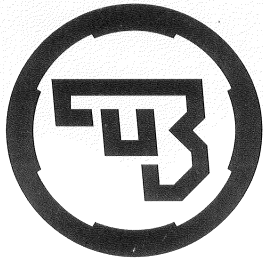
No	Part Name	No	Part Name	No	Part Name
1	Recoil Pad Screw	25	Trigger Plate Pin	53	Firing Pin Spring
2	Recoil Pad	26	Safety Button	54	Firing Pin Retaining Pin
3	Stock	27	Safety Button Detent Pin	55	Extractor
3a	Stock Connection Part	28	Safety Button Spring	56	Extractor Plunger
3b	Recoil Pad	29	Safety Spring Retaining Pin	57	Extractor Spring
3c	Sling Attachment R.H.	30	Trigger	58	Extractor Pin
3d	Sling Attachment L.H.	31	Trigger Sear	59	Locking Block
3e	Pistol Grip bottom cover	32	Trigger Pin	61	Barrel
4	Stock Screw	33	Trigger Spring	61a	Barrel Rear Part
5	Stock ScrewWasher	34	Trigger Sear Detent Spring	61b	Barrel Collar
5a	Washer Stopper	35	Trigger Sear Detent Pin	61c	Ghost ring sight
6	Receiver	36	Carrier	62	Mobile Choke
7	Latch	37	Carrier Dog	64	Picatinny Rail
8	Latch Spring	38	Carrier Dog Follower	64a	Picatinny Rail Screw
9	Interceptor Latch	39	Carrier Dog Follower Spring	65	Rear Sight
10	Interceptor Latch Spring	40	Carrier Dog Follower Plate	65a	Rear Sight Spring
11	Latch Pin Detent Spring	41	Hammer	65b	Rear Sight Adjustment Spring
12	Latch Pin	42	Hammer Pin	65c	Rear Sight Plate
16	Magazine Tube	43	Hammer Plunger	65d	Rear Sight Horizontal Adjusting Screw
17	Magazine Follower	44	Hammer Spring	65e	Rear Sight Ring
18	Magazine Spring	45	Action Release	65f	Rear Sight Vertical Adjusting Screw
19	Magazine Spring Retainer	45a	Release Latch Spring	65g	Rear Sight Screw
20	Forend	46	Action Bar	66	Front Sight Upper Part
21	Magazine Cap	47	Action Bar Plunger Spring	66a	Front Sight O Ring
21a	Sling attachment	48	Action Bar Plunger	66b	Front Sight Fiber Optic Holder
22	Trigger Plate	49	Action Bar Plunger Retaining Pin	66c	Front Sight Fiber Optic
23	Trigger Plate Pin Bushing	51	Breech Bolt	66d	Front Sight Screw
24	Trigger Plate Pin Detent Spring	52	Firing Pin		

CZ-USA Pump Shotgun Part Diagram 12ga









CZ-USA

PROTECT • HUNT • COMPETE

P.O. Box. 171073
Kansas City KS 66117-0073

www.cz-usa.com