

CHIAPPA
firearms

INSTRUCTION MANUAL

204X – 214E Over&Under Shotguns



204X Extractor



214 E Ejector



NASGW

USA
Shooting



OFFICIAL SPONSOR

ATTENTION: BEFORE REMOVING
THIS FIREARM FROM ITS PACKAGE
READ & UNDERSTAND WARNINGS,
INSTRUCTIONS AND PRECAUTIONS
IN THIS USER'S MANUAL

INDEX

WARNINGS.....	3
SAFETY RULES	4
IDENTIFYING MARKINGS.....	5
MODEL RANGE.....	5
AMMUNITION.....	6
BASIC NOMENCLATURE	7
ASSEMBLY	8
TOP LEVER.....	9
SAFETY/BARREL SELECTOR	9
SELECTIVE AUTOMATIC EJECTORS/EXTRACTORS.....	ERROR! BOOKMARK NOT DEFINED.
MULTI CHOKE TUBES	ERROR! BOOKMARK NOT DEFINED.
LOADING	8
FIRING/LOADING/DISSEMBLY	12
CLEANING	13
ORDINARY & EXTRAORDINARY MAINTENANCE	13
EXPLODED VIEWS.....	14
WARRANTY CONDITIONS.....	16



EJECTOR

EXTRACTOR

WARNINGS

The manufacturer is not responsible for damage to objects caused by misuse of the gun or for injuries to persons or animals, or in case of death, caused voluntarily or involuntarily by the gun user.

The manufacturer is not responsible for injuries caused by poor maintenance, misuse of the gun, unauthorized or improper modifications.

The manufacturer declines responsibility for the indirect consequences of any injuries and / or death of persons or animals, damage to objects caused by use of the gun or by primer explosion, by bullet's ricochet, or unsafe loading practices and / or procedure.

Read the entire manual and learn the proper use of the gun without live ammunition. It is important that you understand the proper use of this product.

The life of the people close to you may depend on your safe behaviour.

If the manual is not clear, please contact the dealer where you bought the gun or call the distributor or the manufacturer by using the contact information provided within this manual.

The manufacturer declines any responsibility for misuse of the firearm. In case of alteration of the firearm, The manufacturer declines any civil and penal responsibility and will not refund any damage.

QUALITY INSPECTION: Every firearm is thoroughly inspected by the manufacturer, for function and cosmetic blemish, prior to shipment.

To guarantee the gun is safe, all guns produced in the Italian facility are sent to the National Proof House of Gardone Val Trompia – BRESCIA – ITALY for proof testing, in compliance with Italian law. The Proof House tests the firearm with heavy loads then checks the barrel, chamber and headspace to make certain the firearm is safe for use with standard factory ammunition. The National Proof House will put their markings on the gun, certifying the gun is qualified and can be sold.

Guns produced in our US facility are scrupulously tested in our premises.

Warning!

Discharging firearms in poorly ventilated areas, cleaning firearms, or handling ammunition may result in exposure to lead or other substances known to the State of California to cause birth defects, reproductive harm, and other serious physical injury. Have adequate ventilation at all times. Wash hands thoroughly after exposure.

ANY LEGAL DISPUTE WILL BE UNDER THE JURISDICTION OF A COURT IN THE STATE OF OHIO – USA, OR IN THE COURT OF BRESCIA – ITALY, AT OUR DISCRETION.

SAFETY RULES

1. Read the instructions carefully before use. Reading the manual and careful examination of the gun are fundamental to avoid any kind of problem.
2. Be aware that you are handling a firearm; therefore your knowledge and behaviour may affect your life and those of the people close to you.
3. Guns and ammunitions must be kept in separate places.
4. ALWAYS keep guns and ammunitions out of reach of children.
5. Store the gun in a clean, dry and airy place after use to avoid rust in mechanical parts that may cause serious problems in functioning after a period of inactivity.
6. The gun must ALWAYS be stored unloaded, ALWAYS check that the chamber is empty.
7. Keep away from open flame or heating sources.
8. Never leave a loaded gun unattended.
9. Never leave the weapon loaded, it could fall and cause injury and death. Always point the gun in a safe direction, and handle it as though it were loaded. This is especially important when loading and unloading the gun, and when handing it to someone else. Never take someone's word that it is unloaded. Always make sure the gun is unloaded before laying it down or handing it to someone else.
10. After use, clean and lubricate the inside of the barrel with appropriate oil. Grease or oil build up can cause excessive pressure and result in serious personal injuries. Before using the gun again, inspect the barrel and chamber to make certain that there are no obstructions in the bore. Remove any oil residue with rod and dry patch before shooting.
11. Accumulation of rust in the barrel can cause excessive pressures resulting in serious injury and may cause the explosion of the barrel. A rusted, pitted or eroded barrel should be replaced.
12. Before shooting ALWAYS check to ensure that the barrel is free of obstructions.
13. Never force a jammed action, this act could cause explosion of the round and consequent injury.
14. Use exclusively factory loaded ammunition of the caliber specified on the firearm barrel. Use of different calibers may cause serious personal injuries to you and to people close to you.
15. In case of misfire, manually extract the cartridge from the chamber. If firearm fails to fire when trigger is pulled, as a result of slow primer ignition (hangfire), keep muzzle pointed downrange for a minimum of 30 seconds. If the round does not fire, clear the weapon and examine the ejected, unfired cartridge. If the indent from the firing pin is off center, light or absent, take the gun to a competent gunsmith. If the indent appears normal compared to other rounds, assume a faulty round, separate from other cartridges, reload and continue shooting.
16. Do not attempt to re-use unexploded ammunitions.
17. NEVER modify any parts of your gun. Any alteration may cause serious personal injury and voids the warranty.
18. Only a qualified gunsmith may service the gun for repair or serious maintenance.
19. Pay great attention during transportation and use. Mechanical safety devices can fail. Developing intelligent, good safety habits is the best way to prevent accidents.
20. Never rest your finger on the trigger until the very moment you wish to shoot. Always keep the safety on until you are ready to safely shoot at an intended target (see safety features).

Note: Safety devices on guns are extras and are not a substitute for your proper and safe handling practices.
21. ALWAYS keep the gun unloaded when transporting it from home to the shooting areas. Carefully check that cartridge chamber is empty.
22. When you walk around with the gun in a shooting area, ALWAYS keep the muzzle pointed in a safe direction.

23. NEVER run with a loaded gun, don't cross any obstacle (fences or water courses, etc.) or walk where there is any possibility of slipping or falling without having your firearm unloaded and in safety position.
24. When selecting a place to shoot, always be absolutely sure of your target and the area behind it before you touch the trigger, making sure there is an adequate backstop which will stop and contain bullets. A bullet can travel through or past your target with a range up to 1 1/2 miles. If you have any doubt, do not shoot.
25. Never shoot against a solid surface or in a pool of water, the projectiles could ricochet and shoot toward any direction. Don't shoot up into the sky.
26. Keep all bystanders behind you, standing beside a shooter is not a safe position. Make sure all other shooters and bystanders are well away from the ejection port.
27. Do not smoke while handling, loading or shooting any ammunition, especially black powder. Keep black powder in a closed container at all times, reclosing the container after each and every use.
28. Never drink alcoholic beverages or take any drugs before or during shooting, as this not only constitutes criminal disregard for your safety and that of others, but will seriously impair your judgment and vision. Never use a gun while you are taking medication unless you have checked with your doctor to ensure your fitness to handle the gun safely.
29. Always wear and encourage others near you to wear proper ear protection when shooting, especially on a range since the noise from your gun, and other guns close to you, could result in permanent hearing loss.
30. Always wear protective shooting glasses to protect your eyes from injury by gun powder, gas, lubricant, dirt or metallic particles, carbon residue, sparks or other debris.
31. Wash hands thoroughly after shooting and handling firearms to remove any unwanted residues.
32. NEVER leave the loaded firearm or the loaded magazine in the sun
33. By replica firearms there is no modern safety. In this case you must pay even more attention to safety rules.

REMEMBER: No mechanical safety device is infallible.

The user is responsible for injuries or damages caused to him or to other persons.

COMPLETE KNOWLEDGE OF YOUR FIREARM CAN MAKE THE DIFFERENCE.

IDENTIFYING MARKINGS

Every gun we produce has a serial number that is marked on the receiver/frame. Close to the serial number you will also find the manufacturers information with the model name and caliber marked either on the frame or the slide as required by law.

These markings must not be removed from the firearm for any reason.

MODEL RANGE

SKU	Description	Caliber	Rounds	Barrel Length	Total Length	Weight
930.037	214E Ejector, black receiver, walnut stock, MC-5	12 ga – 3" chmb	2	28"	45"	7.3 lbs
930.038	214E Ejector, black receiver, walnut stock, MC-5	20 ga – 3" chmb	2	26"	43"	6.6 lbs
930.039	204X Extractor, matt black receiver, walnut stock, MC-5	12 ga – 3" chmb	2	28"	45"	6.8 lbs
930.040	204X Extractor, matt black receiver, walnut stock, MC-5	20 ga – 3" chmb	2	26"	43"	6.4 lbs

AMMUNITION

Use only high quality factory ammunition specifically designed for your gauge of shotgun. If the barrel is marked as a 3" chamber, it will accept both 3" and 2 ¾" shotshells. We do not recommend using Slugs in Over & Under shotguns. Shotgun models 204X and 214E will accommodate steel shot. However, steel shot should not be used with any choke tighter than a modified choke (flush mount or external). Do not use steel shot with improved modified, full or extra full choke tubes (flush mount or external).

WARNING: ACCIDENTAL LOADING AND DISCHARGE OF SHELLS OF THE WRONG GAUGE IN YOUR GUN CAN RESULT IN DAMAGE TO YOUR GUN AND INJURY TO THE SHOOTER OR OTHERS.

Only carry the proper ammunition with you when shooting.

NOTICE

WE SPECIFICALLY DISCLAIM RESPONSIBILITY FOR ANY DAMAGE OR INJURY WHATSOEVER OCCURRING IN CONNECTION WITH, OR AS THE RESULT OF, THE USE OF FAULTY, OR NONSTANDARD, OR "REMANUFACTURED" OR HANDLOADED (RELOADED) AMMUNITION, OR OF CARTRIDGES OTHER THAN THOSE FOR WHICH THE FIREARM WAS ORIGINALLY CHAMBERED.

- Death, serious injury, and damage can result from the use of wrong ammunition, bore obstructions, powder overloads, or incorrect cartridge components.
- Use only ammunition specifically recommended for your firearm (the caliber is specified on the barrel/cylinder/frame).
- Always use cartridges whose length is equal or inferior to that indicated on the barrel.
- Use only high quality, original factory manufactured ammunition whose pressure cannot be higher than the one stated by S.A.A.M.I. or C.I.P.
- Your gun has been designed for ammunition of a specific caliber – do not alter the barrel, chamber, caliber for which your gun was designed.
- Be sure you never mix ammunition.
- Firearms may be severely damaged, and serious injury to the shooter or others may result from any condition causing excessive pressure inside the chamber or barrel during firing. Excessive pressure can be caused by obstruction in the barrel, propellant powder overloads, or by the use of incorrect or defectively assembled cartridges. In addition, the use of a dirty, corroded or damaged cartridge can lead to a burst cartridge case and consequent damage to the firearm and personal injury from the sudden escape of high-pressure propellant gas within the firearm's mechanism.

Immediately stop shooting and check the barrel for a possible obstruction whenever:

- You have difficulty in, or feel unusual resistance in chambering a cartridge
- A cartridge misfires (does not go off)
- The mechanism fails to extract a fired cartridge case
- Unburned grains of propellant powder are discovered spilled in the mechanism
- A shot sounds weak or abnormal

In such cases it is possible that a bullet is lodged part way down the barrel. Firing a subsequent bullet into the obstructed barrel can damage the firearm and cause serious injury to the shooter or bystanders.

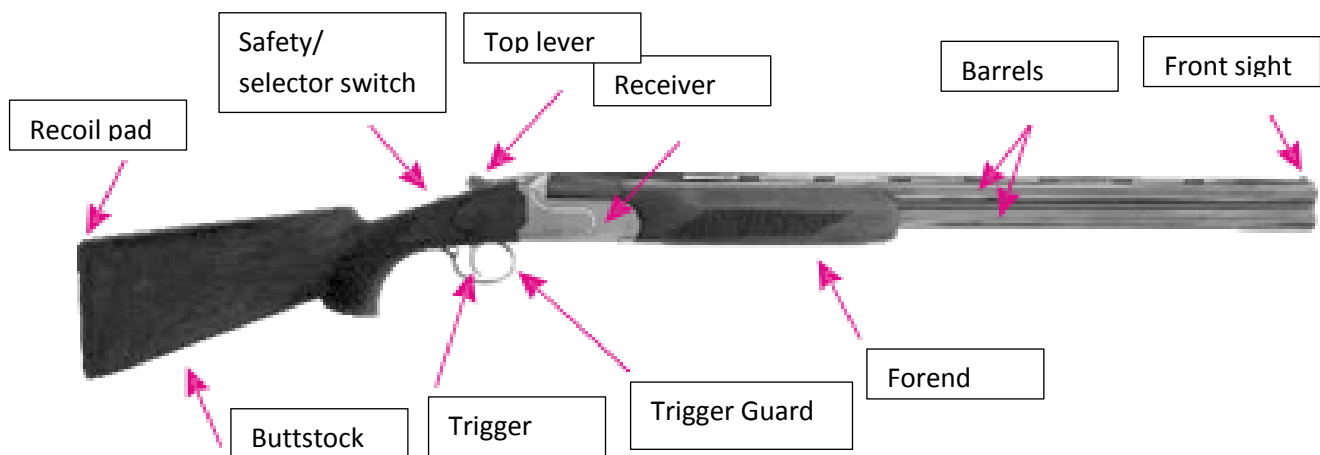
Bullets can become lodged in the barrel:

- If the cartridge has been improperly loaded without propellant powder, or if the powder fails to ignite. Ignition of the cartridge primer alone will push the bullet out of the cartridge case, but usually does not generate sufficient energy to expel the bullet completely from the barrel.
- If the bullet is not properly seated tightly in the cartridge case. When such a cartridge is extracted from the chamber without being fired, the bullet may be left behind in the bore at the point where the rifling begins. Subsequent chambering of another cartridge may push the first bullet further into the bore.
 - If there is any reason to suspect that a bullet is obstructing the barrel, immediately unload the firearm and look through the bore. It is not sufficient to merely look in the chamber. A bullet may be lodged some distance down the barrel where it cannot easily be seen. If a bullet is in the bore, do not attempt to shoot it out by using another cartridge, or by blowing it out with a blank or one from which the bullet has been removed. Such techniques can generate excessive pressure, damage the firearm and cause serious personal injury. If the bullet can be easily removed with a wood or brass dowel, (using hand pressure only, never "hammer" a bullet lodged in the bore) clean any unburned powder grains from the bore, chamber and mechanism before resuming shooting. If the bullet cannot be dislodged by tapping it with a cleaning rod, take the firearm to a gunsmith.
 - Dirt, corrosion, or other foreign matter on a cartridge can impede complete chambering and may cause the cartridge case to burst upon firing. The same is true of cartridges which are damaged or deformed.
 - Don't oil cartridges, and be sure to wipe the chamber clean of any oil preservative before commencing to shoot. Oil interferes with the friction between cartridge case and chamber wall that is necessary for safe functioning, and subjects the firearm to stress similar to that imposed by excessive pressure.
 - Use lubricants liberally on the moving parts of your firearm. Avoid excessive spraying of any aerosol gun care product, especially where it may get on ammunition. All lubricants, and aerosol spray lubricants in particular, can penetrate cartridge primers and cause misfires. Some highly penetrative lubricants can also migrate inside cartridge cases and cause deterioration of the propellant powder; on firing, the powder may not ignite. If only the primer ignites, there is a danger that the bullet may become lodged in the barrel.

WARNING: the accidental loading and discharge of shells of the wrong gauge in your shotgun can result in damage to your gun and possible injury or death to you or others. To be safe at all times, carry only the proper gauge ammunition with you for the gun you are using.

The use of reloaded or improper ammunition voids the warranty.

BASIC NOMENCLATURE



ASSEMBLY

Before assembling the shotgun, make sure there are no shot shells in the chambers.

1. Remove the forend from the barrel by pulling the forend release lever (Fig. 1) away from the forend and pivot the forend away from the barrel. (Fig. 2)



Fig. 1



Fig. 2

2. Apply a small amount of high quality lubricant to all surfaces on both sides marked with red arrow in Fig 3.
3. Attach barrels to the action by pushing the top lever to the right and engaging the dual hinge pin surfaces at the forward portion of the receiver, with the hinge pin bearing notches on each side of the barrel. Hold the barrels with the muzzle at a downward angle with respect to the receiver. Once the bearings are properly seated, lift up on the barrels and close the action. (Fig. 4)
4. When the barrels are closed properly against the receiver, the Top Lever will return toward the center of the action. (Fig. 5a)
5. Attach the forend to the barrels by placing the metal part of the forend assembly against the receiver. Pivot forend toward the barrel to the closed and locked position against the barrels. (Fig. 6)

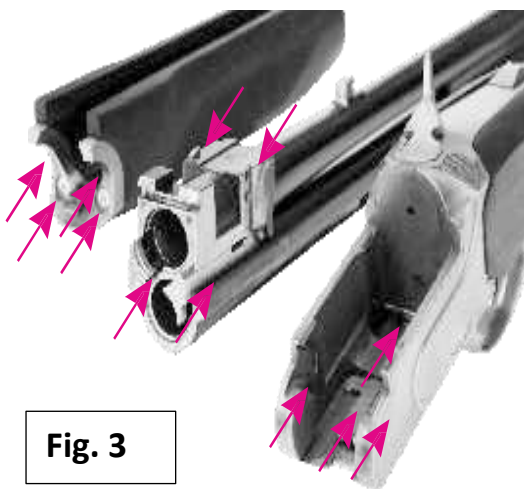


Fig. 3



Fig. 4



Fig. 5a

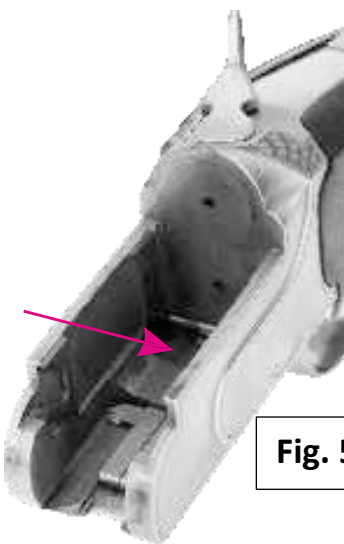


Fig. 5b



Fig. 6

TOP LEVER

The Top Lever controls the locking of the breech of the barrels to the receiver. To open the gun, move the Top Lever to its extreme right hand position and ease down the barrels. The Top Lever will remain in the "OPEN" position until the barrels are again closed and locked. The Top Lever will then automatically return toward the center position (Fig. 5a) With the barrel removed from the receiver the Top Lever can be returned to the center position by depressing the Top Lever Latch. (Fig. 5b) When the barrels are removed from the receiver, the Top Lever should always be returned to the center position to prevent damage and especially during transportation.

SAFETY / BARREL SELECTOR

Safety is first and foremost when handling any firearm. To engage the safety, slide the Safety Button fully rearward. There is a visible "S" to help guide you. To disengage the safety in order to fire the shotgun, slide the Safety Button fully forward. Always keep the safety in the "Safe" position until you are ready to fire the shotgun.

Hunting models are equipped with an automatic safety. When the top lever is moved to the extreme right hand position, the Safety Button will automatically be moved to the rear position or "Safe" position. The Sporting and Trap models are equipped with only a manual safety which requires the Safety Button to be manually moved rearward to the "Safe" position to engage the safety from the fire position.

On 204X and 214E Over & Under shotguns, the safety also performs the function of barrel selector. However, to perform this function the Safety Button must first be in the "Safe" position with the "S" visible. Once the safety is engaged, you can select which barrel will fire first by sliding the Selector Button to either the right or left. With the Selector Button moved to the right, the bottom barrel will fire first. (Fig. 7a) When the Selector Button is moved to the left position, the top barrel will fire first. (Fig. 7b)

WARNING: MAKE SURE YOU DO NOT DISENGAGE THE SAFETY WHILE YOU ARE SELECTING WHICH BARREL TO FIRE FIRST.



Fig. 7A



Fig. 7B

SELECTIVE AUTOMATIC EJECTORS/EXTRACTORS

214E Over & Under shotguns are equipped with automatic ejectors. When you open the breech of the shotgun, they will automatically eject a fired case and partially extract any unfired shell for easy removal by hand. (Fig 8)

204X Over & Under shotguns are equipped with manual extractors. When you open the breech of the shotgun, they will partially extract the shells for easy removal by hand. (Fig 9)



Fig. 8

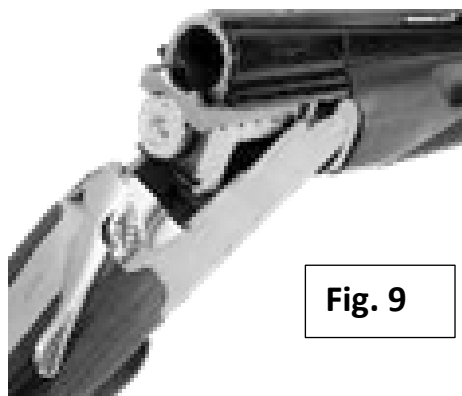


Fig. 9

MULTI CHOKE TUBES

Over & Under shotgun models 204X and 214E are equipped with interchangeable multi choke tubes. The notches on the top of the tube can identify the choke tube. (Fig. 10)

WARNING: STEEL SHOT USAGE

Steel shot (up to and including size 2 shot) should not be fired through your shotgun with a choke tighter than modified. If shot larger than #2 is used, the tightest choke used should be an improved cylinder.

WARNING: PERIODICALLY CHECK TO BE SURE THE CHOKE TUBES ARE TIGHT & PROPERLY SEATED.

Before changing a choke tube, always make sure that your shotgun is unloaded and the safety is in the "Safe" position. To change the choke tubes, use the choke tube wrench. The wrench and additional chokes are supplied in the shotgun box. Insert the wrench into the recessed space of the tube and unscrew counterclockwise. Insert the desired choke tube and seat with the wrench in the clockwise direction. (Fig. 11)

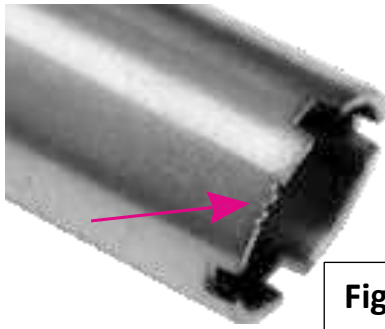


Fig. 10



Fig. 11

NAME	Constriction		Notches	Markings
	Inch	mm		
Cylinder	.000"	0.00	IIIII	C
Skeet	.005"	0.13	IIII	S
Improved Cylinder	.010"	0.25	IIII	IC
Modified	.020"	0.51	III	M
Improved Modified	.025"	0.64	II	IM
Full	.035"	0.89	I	F

WARNING: NEVER FIRE YOUR SHOTGUN WITHOUT A CHOKE TUBE INSTALLED.
This could damage the choke tube threads on the inside of the barrels.

LOADING

To load your Over & Under shotgun, be sure the safety is in the "Safe" position, open the action by moving the top lever to the right. This will cause the lock to disengage and allow the barrels to pivot downward exposing the chambers. Insert shot shells of the appropriate gauge and size into the chambers. (Fig. 12) When you are finished loading the chambers, close the breech by pivoting the barrels against the action. The top lever will return toward the center position when the breech is closed and locked.



Fig. 12

FIRING

WARNING : READ AND UNDERSTAND ALL INSTRUCTIONS AND WARNINGS IN THIS MANUAL BEFORE USING THIS SHOTGUN. It is important to learn the parts of your shotgun and their functions before using this firearm. Be sure of your target and what's beyond before firing.

After you have inserted the shot shells into the chambers and have closed and locked the breech, your shotgun is ready to fire. Disengage the safety by pushing the safety button fully forward. Pull the trigger and the selected barrel will fire. After firing, allow the trigger to return to the fully forward position before firing again. Always keep the shotgun pointed in a safe direction and the safety in the "safe" position.

UNLOADING

Before unloading, check to assure that the safety is in the "Safe" position. Open the action by pushing the top lever all the way to the right and pulling the barrels fully downward. Model 214E Over & Under shotguns are equipped with automatic ejectors. This will eject the fired shells. Be careful by the ejecting action. The unfired shells are partially extracted for easy removal by hand.

Model 204X Over & Under shotguns are equipped with manual extractors. When you open the breech of the shotgun, they will partially extract the shells for easy removal by hand.

DISASSEMBLY

Disassemble, clean and oil your shotgun at regular intervals or when it has been exposed to sand, water or other adverse conditions.

To disassemble your shotgun:

1. Remove the forend by pulling the forend release lever away from the forend, and pivoting the forend away from the barrel.
2. Push the top lever to the right to disengage the action.
3. Remove the barrel assembly.

Further disassembly is not recommended and not necessary for regular maintenance.



Fig. 13

CLEANING

Attention: Careful and detailed cleaning of this firearm is essential to guarantee its safety and proper function.

This product should be cleaned after every use and when exposed to dirt, sand, etc. When not in use, clean at least twice per year. A careful and scrupulous ordinary clearing of the firearms is essential to guarantee its safety and long life. We recommend to clean the weapon at least after shooting 200 to 300 shots.

- Every time you use your gun it is advised to clean it in order to remove all corroding agents (humidity, powder or lead residues etc.) which can in time alter a few parts.
- In order to perform a standard cleaning, it is sufficient to utilize a good solvent, cleaning oil, and a little brush.
- For a deeper cleaning, please contact your local gunsmith

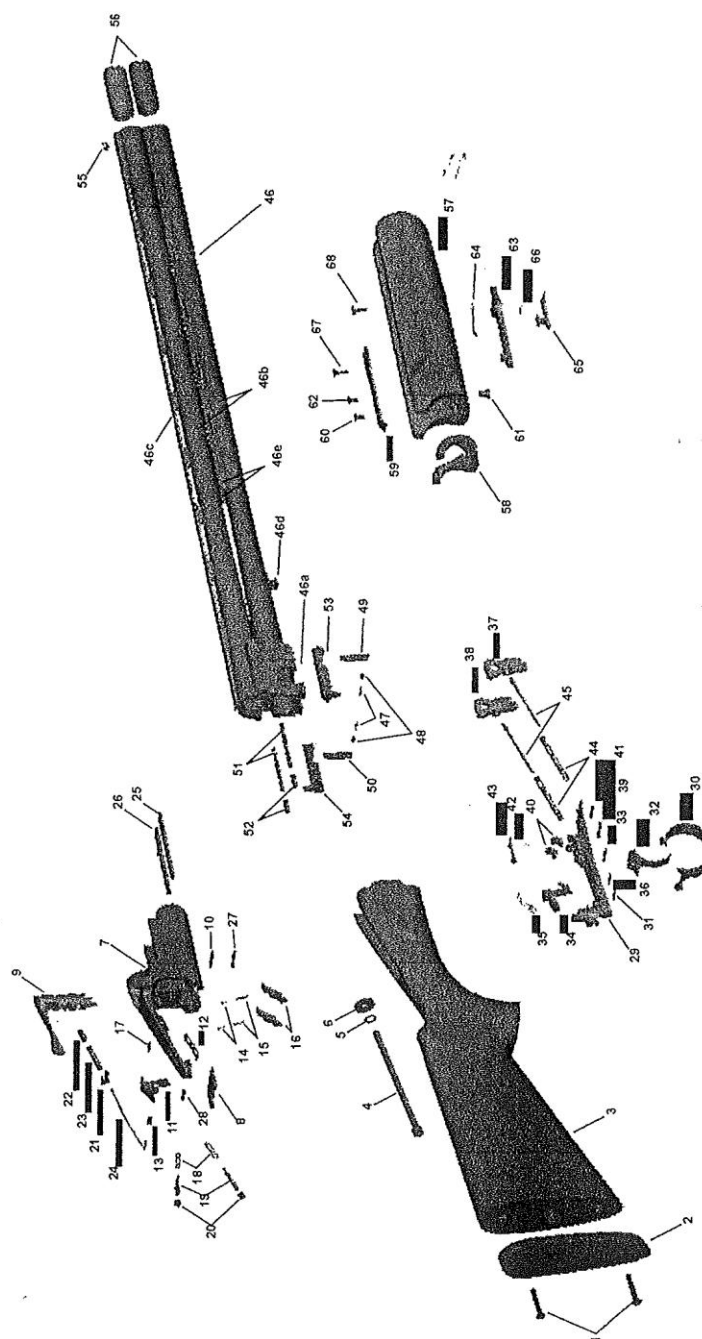
Warning: Always use a cleaning rod from the chamber end of the barrel.

ORDINARY & EXTRAORDINARY MAINTENANCE

- Before conducting any sort of maintenance, make sure the firearm is unloaded.
- By “ordinary maintenance” we refer to measures the user should take to keep the gun in good working conditions.
- An “Extraordinary maintenance” implies the replacement of broken parts and therefore disassembling the gun. In this case only authorized personnel or a qualified gunsmith should handle the task.
- Also a long period of heavy use or inactivity requires an extraordinary maintenance; your gun should be taken to a qualified gunsmith to have the action disassembled for professional cleaning and lubrication.
- Your gunsmith will advise the best lubricant for the good maintenance of your gun.
- Do not leave oil residues when cleaning and lubricating your firearm.
- Make sure that the mechanism of the weapon is easy; if it starts to stiffen, or if corrosion is starting on some essential parts, you should bring your gun to competent, professional personnel.
- Do not use pure silicon or lanolin.
- In the following pages you will find exploded views with a list of all parts. When ordering parts, it's important to specify date of purchase, serial number, model, caliber and item reference of the part/s needed.
- If the gun has a problem that you cannot fix, **DO NOT FIRE**, send it to an authorized center for a check-up. If you try to fix it personally, you may put in serious danger yourself and the people near you. Always pay great attention and handle the gun very carefully, in order to avoid terrible accidents which may change your life and that of others.

EXPLODED VIEWS

Model 214E



Model 204X



PARTS LIST

Model 214X Over & Under Shotgun Part List

STOCK GROUP

- 1 Recoil Pad Screw(x2)
- 2 Recoil Pad
- 3 Stock
- 4 Stock Bolt
- 5 Stock Bolt Lock Washer
- 6 Stock Bolt Washer

RECEIVER GROUP

- 7 Receiver
- 8 Locking Plate
- 9 Top Lever
- 10 Top Lever Pin
- 11 Safety / Selector
- 12 Safety / Selector Spring
- 13 Safety / Selector Stud Pin
- 14 Sear Spring Guide (x2)
- 15 Sear Spring (x2)
- 16 Sear (x2)
- 17 Sear Pin
- 18 Firing Pin Spring (x2)
- 19 Firing Pin (x2)
- 20 Firing Pin Retainer Bushing (x2)
- 21 Top Lever Spring Stop
- 22 Top Lever Spring Guide Plunger
- 23 Top Lever Spring
- 24 Top Lever Spring Guide

- 25 Hammer Cocking Rod R.H.
- 26 Hammer Cocking Rod L.H.
- 27 Bottom Plate Front Pin
- 28 Bottom Plate Back Pin
- 29 Bottom Plate
- 30 Trigger Guard
- 31 Trigger Guard Pin
- 32 Trigger
- 33 Trigger Pin
- 34 Inertia Block
- 35 Inertia Block Spring
- 36 Inertia Block Spring Pin
- 37 Hammer R.H.
- 38 Hammer L.H.
- 39 Hammer Pin
- 40 Hammer Cocking Cam (x2)
- 41 Hammer Cocking Cam Pin
- 42 Top Lever Latch Spring
- 43 Top Lever Latch
- 44 Hammer Spring (x2)
- 45 Hammer Spring Guide Rod (x2)

BARREL GROUP

- 46 Barrel Assembly
- 46a Barrel Mono Block
- 46b Barrel Tube (x2)
- 46c Top Ventilated Rib
- 46d Forend Locking Latch
- 46e Side Rib (x2)

- 47 Ejector Catch Plate Spring (x2)
- 48 Ejector Catch Plate Retainer (x2)
- 49 Ejector Catch Plate R.H.
- 50 Ejector Catch Plate L.H.
- 51 Ejector Spring (x2)
- 52 Ejector Spring Guide (x2)
- 53 Right Ejector
- 54 Left Ejector
- 55 Front Sight
- 56 Choke Tube (x2)

FOREND GROUP

- 57 Forend
- 58 Iron Hook
- 59 Iron Plate
- 60 Iron Plate Screw
- 61 Iron Plate Bushing
- 62 Iron Plate Bushing Screw
- 63 Forend Plate
- 64 Forend Catch Spring
- 65 Forend Catch
- 66 Forend Catch Pin
- 67 Forend Plate Screw
- 68 Forend Iron Plate Screw

Model 204X Over & Under Shotgun Part List

STOCK GROUP

- 1 Recoil Pad Screw(x2)
- 2 Recoil Pad
- 3 Stock
- 4 Stock Bolt
- 5 Stock Bolt Lock Washer
- 6 Stock Bolt Washer

RECEIVER GROUP

- 7 Receiver
- 8 Locking Plate
- 9 Top Lever
- 10 Top Lever Pin
- 11 Safety / Selector
- 12 Safety / Selector Spring
- 13 Safety / Selector Stud Pin
- 14 Sear Spring Guide (x2)
- 15 Sear Spring (x2)
- 16 Sear (x2)
- 17 Sear Pin
- 18 Firing Pin Spring (x2)
- 19 Firing Pin (x2)
- 20 Firing Pin Retainer Bushing (x2)

- 21 Top Lever Spring Stop
- 22 Top Lever Spring Guide Plunger
- 23 Top Lever Spring
- 24 Top Lever Spring Guide
- 25 Hammer Cocking Rod Spring
- 26 Hammer Cocking Rod
- 27 Bottom Plate Front Pin
- 28 Bottom Plate Back Pin
- 29 Bottom Plate
- 30 Trigger Guard
- 31 Trigger Guard Pin
- 32 Trigger
- 33 Trigger Pin
- 34 Inertia Block
- 35 Inertia Block Spring
- 36 Inertia Block Spring Pin
- 37 Hammer R.H.
- 38 Hammer L.H.
- 39 Hammer Pin
- 40 Hammer Cocking Cam (x2)
- 41 Hammer Cocking Cam Pin
- 42 Top Lever Latch Spring
- 43 Top Lever Latch
- 44 Hammer Spring (x2)
- 45 Hammer Spring Guide Rod (x2)

BARREL GROUP

- 46 Barrel Assembly
- 46a Barrel Mono Block
- 46b Barrel Tube (x2)
- 46c Top Ventilated Rib
- 46d Forend Locking Latch
- 46e Side Rib (x2)
- 47 Extractor
- 55 Front Sight
- 56 Choke Tube (x2)

FOREND GROUP

- 57 Forend
- 58 Iron Hook
- 59 Iron Plate
- 60 Iron Plate Screw
- 61 Iron Plate Bushing
- 62 Iron Plate Bushing Screw
- 63 Forend Plate
- 64 Forend Catch Spring
- 65 Forend Catch
- 66 Forend Catch Pin
- 67 Forend Plate Screw
- 68 Forend Iron Plate Screw

WARRANTY CONDITIONS

The manufacturer guarantees that our products are scrupulously checked against defects in materials, workmanship and aesthetical and functioning problems.

In case you find a defect in one of our products, you should immediately contact Chiappa Firearms or where you have bought your gun. All warranty work will be preformed by Chiappa Firearms.

ATTENTION: All customers returning product for warranty service must first obtain a return authorization from Chiappa Firearms. The request for a return authorization may be obtained through our web site, email or phone. Information required is name and address, model, serial number, and defect. It is the customer's responsibility for adequately packaging the product to prevent shipping damage.

The manufacturer guarantees, for a year after the purchase date, the free substitution of parts for defects which have been found out during use: wear of parts which shouldn't be subject to wear, or excessive wear of parts subject to wear. **The customer will have to give evidence of the purchase date with a bill or other valid proof.**

In case the defect under cover of guarantee is not repairable, the manufacturer will provide for a free substitution of the weapon.

THE MANUFACTURER RESERVES THE RIGHT OF DEFINING THE TYPE OF DEFECT OF THE FIREARM, AND THEREFORE TO STATE WHETHER THE DEFECT IS COVERED BY GUARANTEE. The manufacturer's decision will be fair but final.

The manufacturer will be allowed a timing of 60 days for repair under guarantee, and 180 days for free substitution.

The guarantee does not cover parts subject to wear and corrosion

ATTENTION: delivery expenses to and from the service center are not covered by the guarantee and will be charged to the customer.

This gun has been manufacturers according to the regulations of Italian laws and the Italian Proof House. If exported outside Italy, the importer/distributor will be responsible to ensure that the gun complies with the local legal requirements.

THE GUARANTEE IS VOID IN CASE:

- Inadequate ammunition has been used (any ammunition but those commonly on sale, reloaded ammunition, different from caliber and specification indicated on the firearm barrel)
- The firearm failed to be provided proper maintenance and cleaning
- The firearm has been modified without our prior consent
- Unauthorized, inadequate or incorrect repairs have been carried out
- Non original spare parts were used
- Parts subject to wear and corrosion

- Damage (improper use of the gun by the user)
- Expired guarantee

In the above cases the repair, if carried out, will be charged to the customer

In case, for any valid reason, you do not have the possibility to obtain repair under guarantee at the shop where you bought the firearm, you may contact us directly; we will indicate a local dealer to support you with the repair file:

USA - Phone: +1-937-835-5000

e-mail: info@chiappafirearms.com

CANADA (Murray Charlton) – Phone +1-778.426.3884

e-mail: murray.mdcent@gmail.com

REST OF THE WORLD - Phone: +39/030/9749065

e-mail: info@chiappafirearms.com

**This instruction manual must always follow the firearm,
also in case of change of ownership**

Procedure for the use of warranty

If you have any questions, please contact the service department, at the numbers indicated above; in case you need to return the firearm for repair, please follow the instructions below:

REGISTER your firearm in our website: <http://www.chiappafirearms.com/registration>

CONTACT the gunshop where the product was bought, or the Chiappa Firearms facility for USA, Canada or Rest of the World as indicated above. You will receive a RETURN TICKET number and the shipping instructions to return the gun.

FILL IN the attached form, which will accompany the return firearm. Don't forget to include the RMA number, a description of the defect and a copy of the proof of the purchase indicating the purchase date.

SHIP the weapon to Chiappa Firearms. (or to service center) in its original packing, but first

- Make absolutely certain it is unloaded;
- Do not send ammunition with your shotgun;
- Remove any accessories;
- Please package the gun securely (be certain gun parts cannot shift during shipment) in a suitable shipping container – possibly in the original box;
- Include the attached form duly filling all fields, with a clear description of the problem and service you wish us to perform;
- Please give us a clear ship-to address, (no P.O. Box numbers) your daytime phone number and if possible a fax number and email address;
- Please attach a copy of the purchase proof and place your correspondence inside the package

REPAIR UNDER GUARANTEE

RMA Number _____

**Please write in the above box the
RETURN MARCHANDISE NUMBER**

1. Customer data:

- Name: _____
- Address : _____
- Town : _____
- ZIP Code : _____
- Phone : _____ Available from ____ to ____
- Fax : _____
- Email address: _____

2. Product information:

- Model : _____
- Serial number : _____

3. Gun Shop - dealer:

- Purchase date : _____
- Dealer name : _____
- Dealer address: _____

4. Description of defect:

Documents to attach: Proof of purchase with date

[illegible]



1415 Stanley Avenue
Dayton, OH 45404

www.chiappafirearms.com
email: info@chiappafirearms.com