

INSTRUCTION MANUAL

CHIAPPA
firearms

CA 612 Semiauto Shotgun



NASGW

USA
Shooting



OFFICIAL SPONSOR

ATTENTION: BEFORE REMOVING
THIS FIREARM FROM ITS PACKAGE
READ & UNDERSTAND WARNINGS,
INSTRUCTIONS AND PRECAUTIONS
IN THIS USER'S MANUAL

INDEX

WARNINGS	3
SAFETY RULES	4
IDENTIFYING MARKINGS.....	5
MODEL RANGE	5
AMMUNITION	6
TECHNICAL SPECIFICATION AND ACTION	7
SAFETY FEATURES	8
INTERCHANGEABLE CHOKE TUBES	8
ASSEMBLY.....	9
SHOOTING/FIRING.....	10
UNLOADING.....	10
DISASSEMBLY (FIELD STRIPPING)	11
CLEANING	12
ORDINARY & EXTRAORDINARY MAINTENANCE	12
EXPLODED VIEWS	13
WARRANTY CONDITIONS.....	21

WARNINGS

The manufacturer is not responsible for damage to objects caused by misuse of the gun or for injuries to persons or animals, or in case of death, caused voluntarily or involuntarily by the gun user.

The manufacturer is not responsible for injuries caused by poor maintenance, misuse of the gun, unauthorized or improper modifications.

The manufacturer declines responsibility for the indirect consequences of any injuries and / or death of persons or animals, damage to objects caused by use of the gun or by primer explosion, by bullet's ricochet, or unsafe loading practices and / or procedure.

Read the entire manual and learn the proper use of the gun without live ammunition. It is important that you understand the proper use of this product.

The life of the people close to you may depend on your safe behavior.

If the manual is not clear, please contact the dealer where you bought the gun or call the distributor or the manufacturer by using the contact information provided within this manual.

The manufacturer declines any responsibility for misuse of the firearm. In case of alteration of the firearm, The manufacturer declines any civil and penal responsibility and will not refund any damage.

QUALITY INSPECTION: Every firearm is thoroughly inspected by the manufacturer, for function and cosmetic blemish, prior to shipment.

To guarantee the gun is safe, all guns produced in the Italian facility are sent to the National Proof House of Gardone Val Trompia – BRESCIA – ITALY for proof testing, in compliance with Italian law. The Proof House tests the firearm with heavy loads then checks the barrel, chamber and headspace to make certain the firearm is safe for use with standard factory ammunition. The National Proof House will put their markings on the gun, certifying the gun is qualified and can be sold.

Guns produced in our US facility or Turkey are scrupulously tested at the manufacturing premises.

Warning!

Discharging firearms in poorly ventilated areas, cleaning firearms, or handling ammunition may result in exposure to lead or other substances known to the State of California to cause birth defects, reproductive harm, and other serious physical injury. Have adequate ventilation at all times. Wash hands thoroughly after exposure.

ANY LEGAL DISPUTE WILL BE UNDER THE JURISDICTION OF A COURT IN THE STATE OF OHIO – USA, OR IN THE COURT OF BRESCIA – ITALY, AT OUR DISCRETION.

SAFETY RULES

1. Read the instructions carefully before use. Reading the manual and careful examination of the gun are fundamental to avoid any kind of problem.
2. Be aware that you are handling a firearm; therefore your knowledge and behaviour may affect your life and those of the people close to you.
3. Guns and ammunitions must be kept in separate places.
4. ALWAYS keep guns and ammunitions out of reach of children.
5. Store the gun in a clean, dry and airy place after use to avoid rust in mechanical parts that may cause serious problems in functioning after a period of inactivity.
6. The gun must ALWAYS be stored unloaded, ALWAYS check that the chamber is empty.
7. Keep away from open flame or heating sources.
8. Never leave a loaded gun unattended.
9. Never leave the weapon loaded, it could fall and cause injury and death. Always point the gun in a safe direction, and handle it as though it were loaded. This is especially important when loading and unloading the gun, and when handing it to someone else. Never take someone's word that it is unloaded. Always make sure the gun is unloaded before laying it down or handing it to someone else.
10. After use, clean and lubricate the inside of the barrel with appropriate oil. Grease or oil build up can cause excessive pressure and result in serious personal injuries. Before using the gun again, inspect the barrel and chamber to make certain that there are no obstructions in the bore. Remove any oil residue with rod and dry patch before shooting.
11. Accumulation of rust in the barrel can cause excessive pressures resulting in serious injury and may cause the explosion of the barrel. A rusted, pitted or eroded barrel should be replaced.
12. Before shooting ALWAYS check to ensure that the barrel is free of obstructions.
13. Never force a jammed action, this act could cause explosion of the round and consequent injury.
14. Use exclusively factory loaded ammunition of the caliber specified on the firearm barrel. Use of different calibers may cause serious personal injuries to you and to people close to you.
15. In case of misfire, manually extract the cartridge from the chamber. If firearm fails to fire when trigger is pulled, as a result of slow primer ignition (hangfire), keep muzzle pointed downrange for a minimum of 30 seconds. If the round does not fire, remove the magazine, clear the weapon and examine the ejected, unfired cartridge. If the indent from the firing pin is off center, light or absent, take the gun to a competent gunsmith. If the indent appears normal compared to other rounds, assume a faulty round, separate from other cartridges, reload and continue shooting.
16. Do not attempt to re-use unexploded ammunitions.
17. NEVER modify any parts of your gun. Any alteration may cause serious personal injury and voids the warranty.
18. Only a qualified gunsmith may service the gun for repair or serious maintenance.
19. Pay great attention during transportation and use. Mechanical safety devices can fail. Developing intelligent, good safety habits is the best way to prevent accidents.
20. Never rest your finger on the trigger until the very moment you wish to shoot. Always keep the safety on until you are ready to safely shoot at an intended target (see safety features).

Note: Safety devices on guns are extras and are not a substitute for your proper and safe handling practices.
21. ALWAYS keep the gun unloaded when transporting it from home to the shooting areas. Carefully check that cartridge chamber is empty.
22. When you walk around with the gun in a shooting area, ALWAYS keep the muzzle pointed in a safe direction.
23. NEVER run with a loaded gun, don't cross any obstacle (fences or water courses, etc.) or walk where there is any possibility of slipping or falling without having your firearm unloaded and in safety position.

24. When selecting a place to shoot, always be absolutely sure of your target and the area behind it before you touch the trigger, making sure there is an adequate backstop which will stop and contain bullets. A bullet can travel through or past your target with a range up to 1 1/2 miles. If you have any doubt, do not shoot.
25. Never shoot against a solid surface or in a pool of water, the projectiles could ricochet and shoot toward any direction. Don't shoot up into the sky.
26. Keep all bystanders behind you, standing beside a shooter is not a safe position. Make sure all other shooters and bystanders are well away from the ejection port.
27. Do not smoke while handling, loading or shooting any ammunition, especially black powder. Keep black powder in a closed container at all times, reclosing the container after each and every use.
28. Never drink alcoholic beverages or take any drugs before or during shooting, as this not only constitutes criminal disregard for your safety and that of others, but will seriously impair your judgment and vision. Never use a gun while you are taking medication unless you have checked with your doctor to ensure your fitness to handle the gun safely.
29. Always wear and encourage others near you to wear proper ear protection when shooting, especially on a range since the noise from your gun, and other guns close to you, could result in permanent hearing loss.
30. Always wear protective shooting glasses to protect your eyes from injury by gun powder, gas, lubricant, dirt or metallic particles, carbon residue, sparks or other debris.
31. Wash hands thoroughly after shooting and handling firearms to remove any unwanted residues.
32. NEVER leave the loaded firearm or the loaded magazine in the sun
33. By replica firearms there is no modern safety. In this case you must pay even more attention to safety rules.

REMEMBER: No mechanical safety device is infallible.

The user is responsible for injuries or damages caused to him or to other persons.

COMPLETE KNOWLEDGE OF YOUR FIREARM CAN MAKE THE DIFFERENCE.

IDENTIFYING MARKINGS

Every gun we produce has a serial number that is marked on the receiver/frame. Close to the serial number you will also find the manufacturers information with the model name and caliber marked either on the frame or the slide as required by law.

These markings must not be removed from the firearm for any reason.

MODEL RANGE

SKU	Description	Caliber	Rounds	Barrel L	Total L.	Weight
930.041	CA612 Field	12 ga – 3"	5 + 1	28"	49.6"	7 lbs
930.042	CA612 Field Camo	12 ga – 3"	5 + 1	28"	49.6"	7 lbs
930.043	CA612 Turkey	12 ga – 3"	5 + 1	24"	45.6"	6.7 lbs
930.044	CA612 Tactical	12 ga – 3"	5 + 1	22"	43.6"	6.6 lbs

AMMUNITION

CA 612 is a semi-automatic, .12 caliber (3 inch or 2 ¾ inch) shotgun. It can be used with cartridges between 24 to 54 gram.

NOTICE

WE SPECIFICALLY DISCLAIM RESPONSIBILITY FOR ANY DAMAGE OR INJURY WHATSOEVER OCCURRING IN CONNECTION WITH, OR AS THE RESULT OF, THE USE OF FAULTY, OR NONSTANDARD, OR “REMANUFACTURED” OR HANDLOADED (RELOADED) AMMUNITION, OR OF CARTRIDGES OTHER THAN THOSE FOR WHICH THE FIREARM WAS ORIGINALLY CHAMBERED.

- Death, serious injury, and damage can result from the use of wrong ammunition, bore obstructions, powder overloads, or incorrect cartridge components.
- Use only ammunition specifically recommended for your firearm (the caliber is specified on the barrel/cylinder/frame).
- Always use cartridges whose length is equal or inferior to that indicated on the barrel.
- Use only high quality, original factory manufactured ammunition whose pressure cannot be higher than the one stated by S.A.A.M.I. or C.I.P.
- Your gun has been designed for ammunition of a specific caliber – do not alter the barrel, chamber, caliber for which your gun was designed.
- Be sure you never mix ammunition.
- Firearms may be severely damaged, and serious injury to the shooter or others may result from any condition causing excessive pressure inside the chamber or barrel during firing. Excessive pressure can be caused by obstruction in the barrel, propellant powder overloads, or by the use of incorrect or defectively assembled cartridges. In addition, the use of a dirty, corroded or damaged cartridge can lead to a burst cartridge case and consequent damage to the firearm and personal injury from the sudden escape of high-pressure propellant gas within the firearm's mechanism.

Immediately stop shooting and check the barrel for a possible obstruction whenever:

- You have difficulty in, or feel unusual resistance in chambering a cartridge
- A cartridge misfires (does not go off)
- The mechanism fails to extract a fired cartridge case
- Unburned grains of propellant powder are discovered spilled in the mechanism
- A shot sounds weak or abnormal

In such cases it is possible that a bullet is lodged part way down the barrel. Firing a subsequent bullet into the obstructed barrel can damage the firearm and cause serious injury to the shooter or bystanders.

Bullets can become lodged in the barrel:

- If the cartridge has been improperly loaded without propellant powder, or if the powder fails to ignite. Ignition of the cartridge primer alone will push the bullet out of the cartridge case, but usually does not generate sufficient energy to expel the bullet completely from the barrel.
- If the bullet is not properly seated tightly in the cartridge case. When such a cartridge is extracted from the chamber without being fired, the bullet may be left behind in the bore at the point where the rifling begins. Subsequent chambering of another cartridge may push the first bullet further into the bore.
- If there is any reason to suspect that a bullet is obstructing the barrel, immediately unload the firearm and look through the bore. It is not sufficient to merely look in the chamber. A

bullet may be lodged some distance down the barrel where it cannot easily be seen. If a bullet is in the bore, do not attempt to shoot it out by using another cartridge, or by blowing it out with a blank or one from which the bullet has been removed. Such techniques can generate excessive pressure, damage the firearm and cause serious personal injury. If the bullet can be easily removed with a wood or brass dowel, (using hand pressure only, never "hammer" a bullet lodged in the bore) clean any unburned powder grains from the bore, chamber and mechanism before resuming shooting. If the bullet cannot be dislodged by tapping it with a cleaning rod, take the firearm to a gunsmith.

- Dirt, corrosion, or other foreign matter on a cartridge can impede complete chambering and may cause the cartridge case to burst upon firing. The same is true of cartridges which are damaged or deformed.
- Don't oil cartridges, and be sure to wipe the chamber clean of any oil preservative before commencing to shoot. Oil interferes with the friction between cartridge case and chamber wall that is necessary for safe functioning, and subjects the firearm to stress similar to that imposed by excessive pressure.
- Use lubricants liberally on the moving parts of your firearm. Avoid excessive spraying of any aerosol gun care product, especially where it may get on ammunition. All lubricants, and aerosol spray lubricants in particular, can penetrate cartridge primers and cause misfires. Some highly penetrative lubricants can also migrate inside cartridge cases and cause deterioration of the propellant powder; on firing, the powder may not ignite. If only the primer ignites, there is a danger that the bullet may become lodged in the barrel.

WARNING: the accidental loading and discharge of shells of the wrong gauge in your shotgun can result in damage to your gun and possible injury or death to you or others. To be safe at all times, carry only the proper gauge ammunition with you for the gun you are using.

The use of reloaded or improper ammunition voids the warranty.

TECHNICAL SPECIFICATION

Action	SEMI-AUTO Inertial Rotary System
Gauge	12
Chamber	3"
Barrel Length	22, 24, 28 Inch
Barrel	Chrome Coating
Magazine Capacity	5+1 for 2 ¾", 4 + 1 for 3"
Recoil Pad	Ergonomic Rubber
Safety	Manual, Reversible Safety Button
Weight (For 12 Gauge)	6.5 – 7 lb
Stock and Forend	Synthetic or Walnut
Chokes	Mobile Choke System (1-2-3-4-5)
Locking System	Rotating Bolt With Reinforced Lugs
Receiver	Aluminum-Alloy Receiver
Trigger	Nickel, Chrome, Black Oxide
Front Sight	Fiber Optic

ACTION

CA612 semi-automatic shotgun operates with the kinetic recoil (inertia) energy this recoil energy completes the cycle of the action. This operating system is based on the rotary head which is located inside the mechanism.

CA612 does not need to use any gas pressure and any action of barrel. Therefore energy loss comes down to zero. It provides you more effective shooting at farther distances than other shotguns.

CA612 is manufactured to ISO 9001:2000 International quality Standards and TS 870 Turkish standard.

SAFETY FEATURES

NEVER ASSUME THE GUN IS UNLOADED. You can never be sure a gun is unloaded unless you check that the charger is not in place/ the cartridge chamber / magazine tube / cylinder is completely empty.

Never rely solely on mechanical features alone - always be extremely careful, use safe gun handling practices, and avoid situations which could lead to an accident.

This firearm is equipped with several safety features which, if properly employed, can minimize the danger of accidental discharge.

MANUAL SAFETY

Your shotgun is equipped with a manual trigger block safety button located in the trigger guard, just behind the trigger. When the button is pushed from the left side of the receiver, protruding to the right side, the trigger is blocked and the safety is on.

When the button is pushed from the right side of the receiver, protruding to the left side, you will see a red circle on the safety button indicating the safety is off and the shotgun is in an unsafe condition, ready to fire if the trigger is pulled. These directions are opposite for left hand shotguns.

CAUTION: The manual safety of your shotgun should always be on except if you are ready to pull the trigger and fire the shotgun. This will help insure that no accidental discharges take place. You should only have the safety off, and be able to see the red line on the left side of the receiver, when you are ready to shoot (directions are opposite for left hand shotguns).

INTERCHANGEABLE CHOKE TUBES

All semi-auto shotguns, except slug models, come with an interchangeable internal choke tube and a choke tube wrench. You have the possibility to modify your pattern density by installing interchangeable chokes with a different restriction.

Your barrel is threaded for your choke tubes. For internal tubes, insert the wrench into the slotted portion of the tube and turn counter-clockwise to remove it from the barrel; turn clockwise to install it.

WARNING

When installing a choke tube in your barrel, make sure that the tube is completely screwed down tight in the barrel. Never discharge your shotgun without the choke tubes installed as this may damage the barrel. Choke tubes may become loose after extended firing and should be checked frequently for tightness.

STEEL SHOT WARNING

Steel shot shells should only be used with modified tubes or tubes with less constriction than modified tubes. Do not fire steel shot through Full choke tubes or tubes with greater constriction than Modified.

CHOKE TUBE MARKINGS

Your internal interchangeable choke tubes are marked with notches at the end of the tubes to indicate the choke type for that particular tube, as well as relevant letters on them.

ASSEMBLY

The CA612 is packed in a case with two subassemblies: the stock/receiver/forend assembly and the barrel/breech assembly. The following steps should be followed to ensure proper assembly of the shotgun.

1. With the stock/receiver/forend assembly, unscrew the magazine cap (counter clockwise) from the magazine tube and slide the forend off of the magazine tube.
2. Assemble the forend to the barrel/breech assembly. Insert the front end of the forend over the barrel lug and push forward with the forend until the back end of the forend is in front of the raised ring on the barrel breech. In the correct position the forend will be parallel with the barrel.
3. Hold the stock/receiver/forend assembly in one hand and with the other hand slide the barrel/forend assembly over the magazine tube. The magazine tube will be going through the forend. Position the barrel/forend all the way into the receiver. Note it may be necessary to slightly rotate the barrel/forend assembly back and forth to assist in properly seating the barrel to the receiver.
4. Screw the magazine cap (clockwise) tightly on the magazine tube to seat the barrel/forend assembly firmly to the receiver.

LIMITER

The CA612 shotgun comes with a shot shell limiter which is a plastic rod 7" long and depending on the model, may be installed or included as accessory in the case. If installed on the shotgun, it will be located in the end of the magazine tube under the magazine cap. This will limit the number of rounds that can be installed in the magazine tube to two shells. To remove the limiter, remove the magazine cap by turning counter clockwise, pull the limiter out of the end of the magazine tube and re-install the magazine cap. To install, remove the magazine cap, install the limiter through the hole in the end of magazine tube and screw the magazine cap back in place.

LOADING

Warning: Keep muzzle pointed in safe direction and follow all safety procedures at all times. Practice these steps with an unloaded gun or dummy ammo until you are completely familiar and comfortable with the procedures. Use live ammo only when you are prepared to shoot. Always use clean, dry, high quality ammunition (of the proper caliber) that meets industry performance standards.

CAUTION

Do not load your shotgun until you are ready to use it and unload it immediately after you have finished shooting. Always carry your shotgun with the safety engaged. The user of this shotgun, and all firearms, should never depend on the manual safety, or any other

mechanical device, to make a firearm completely safe. It is your responsibility to always keep the muzzle of your firearm pointed in a safe direction.

LOADING CARTRIDGE INTO THE MAGAZINE

Make sure the safety is on safe and the red ring is not visible on the safety button. Select the suitable cartridge according to your purpose (hunting or target shooting, etc...). The CA612 can be loaded with 2 ¾" or 3" shells. Rotate the gun for easy access to the bottom of the receiver. Keep the muzzle pointed in a safe direction. Insert a cartridge into the bottom of the receiver, pushing up on the bottom of the shell carrier and forward into the magazine tube until it disappears and is held into place by the carrier latch. Repeat this step until the magazine is fully loaded. The magazine will hold 5 cartridges of 2 ¾" without the Limiter installed and only 2 cartridges with the Limiter installed.

Note: The shell carrier will not move up for loading unless the hammer is cocked. To cock the hammer, pull the bolt assembly back with the bolt handle all the way to the rear. The bolt will stay open in a locked position. With light finger pressure on the bolt handle, push the bolt release button on the right side of the receiver and the bolt will move forward. This will cock the hammer and the magazine tube can be loaded.

INSERTING CARTRIDGE INTO THE BARREL CHAMBER

First make sure the shotgun safety is on the safe position and the barrel is pointed in a safe direction. With the magazine loaded, press the magazine release lever upward. The magazine release lever is located on the right side of the trigger group in front of the trigger. This will allow a cartridge to come out of the magazine tube and on top of the shell carrier. Pull the bolt handle all the way rearward and release. Now your shotgun is ready to shoot.

SHOOTING/FIRING

Always wear eye and hearing protection when shooting.

1. Point muzzle in a safe direction.
2. Load gun as previously directed.
3. Hold the gun firmly.
4. With your finger well clear of the trigger, disengage the safety.
5. Place index finger on trigger, take aim and gently squeeze rearward until hammer is released and falls forward striking the firing pin. Be prepared for loud noise and recoil.
6. Immediately when you are finished shooting and keeping the barrel pointed in a safe direction, place the safety button to the "on safe" position.

UNLOADING

To unload the CA612 shotgun, carefully follow the following steps.

WARNING: PUT THE MANUAL SAFETY IN THE "ON SAFE" POSITION.

WARNING: EVEN THOUGH THE SAFETY IS "ON SAFE" THROUGHOUT THIS OPERATION, ALWAYS KEEP THE BARREL MUZZLE POINTED IN A SAFE DIRECTION.

REMOVING THE CARTRIDGE FROM THE BARREL

1. Open the bolt by pulling back on the bolt handle. The cartridge in the chamber will be extracted from the chamber and ejected.
2. Release the bolt handle allowing the bolt to move forward and close on an empty chamber.

UNLOADING THE CARTRIDGES FROM THE MAGAZINE

3. Push the magazine release lever upward to put the cartridge on the shell carrier. Pull the bolt handle rearward and release placing a cartridge in the chamber. Pull the bolt handle rearward and the cartridge will be extracted and ejected. Release the bolt handle allowing the bolt to move forward on an empty chamber.
4. Repeat Step 3 until all cartridges have been removed from the magazine.
5. To make sure all cartridges have been removed from the magazine, rotate the gun to see the bottom of the receiver. Push the carrier lever up and visually inspect the magazine tube to be certain the magazine is completely unloaded and no cartridges visible. Only the magazine follower should be visible.

DISASSEMBLY (FIELD STRIPPING)

WARNING: BEFORE DISASSEMBLY OR ATTEMPTING ANY WORK ON YOUR CA612 SHOTGUN, MAKE SURE THAT THE CHAMBER AND THE MAGAZINE IS UNLOADED.

To disassemble the gun for routine cleaning and maintenance, use the following steps:

1. Unscrew the magazine cap by turning it clockwise and removing it from the magazine tube.
2. Pull the barrel/forend assembly out of the receiver and off and over the magazine tube.
3. Remove the forend from the barrel by pulling down on the rear of the forend and rotate it down and off of the barrel ring.
4. Pull the bolt handle out of the bolt and slide the bolt assembly out of the receiver.

DISASSEMBLY OF THE BOLT

WARNING: The firing pin is under spring pressure.

5. Depress the firing pin and use a punch to remove the firing pin retaining pin from the bolt assembly. Remove the firing pin and firing pin spring.

6. Remove the locking head pin from the bolt and pull out the locking head from the bolt body. No further disassembly is required for the bolt.
7. Punch the trigger guard pin out from right to left. Press down on the bolt release button and pull the trigger group out of the receiver.

Your CA612 shotgun is completely stripped for routine maintenance and cleaning. Any further disassembly is not recommended and should only be done by a qualified gunsmith.

After cleaning and lubricating, assemble the shotgun back following the disassembly steps in reverse.

CLEANING

Attention: Careful and detailed cleaning of this firearm is essential to guarantee its safety and proper function.

This product should be cleaned after every use and when exposed to dirt, sand, etc. When not in use, clean at least twice per year. A careful and scrupulous ordinary clearing of the firearms is essential to guarantee its safety and long life. We recommend to clean the weapon at least after shooting 200 to 300 shots.

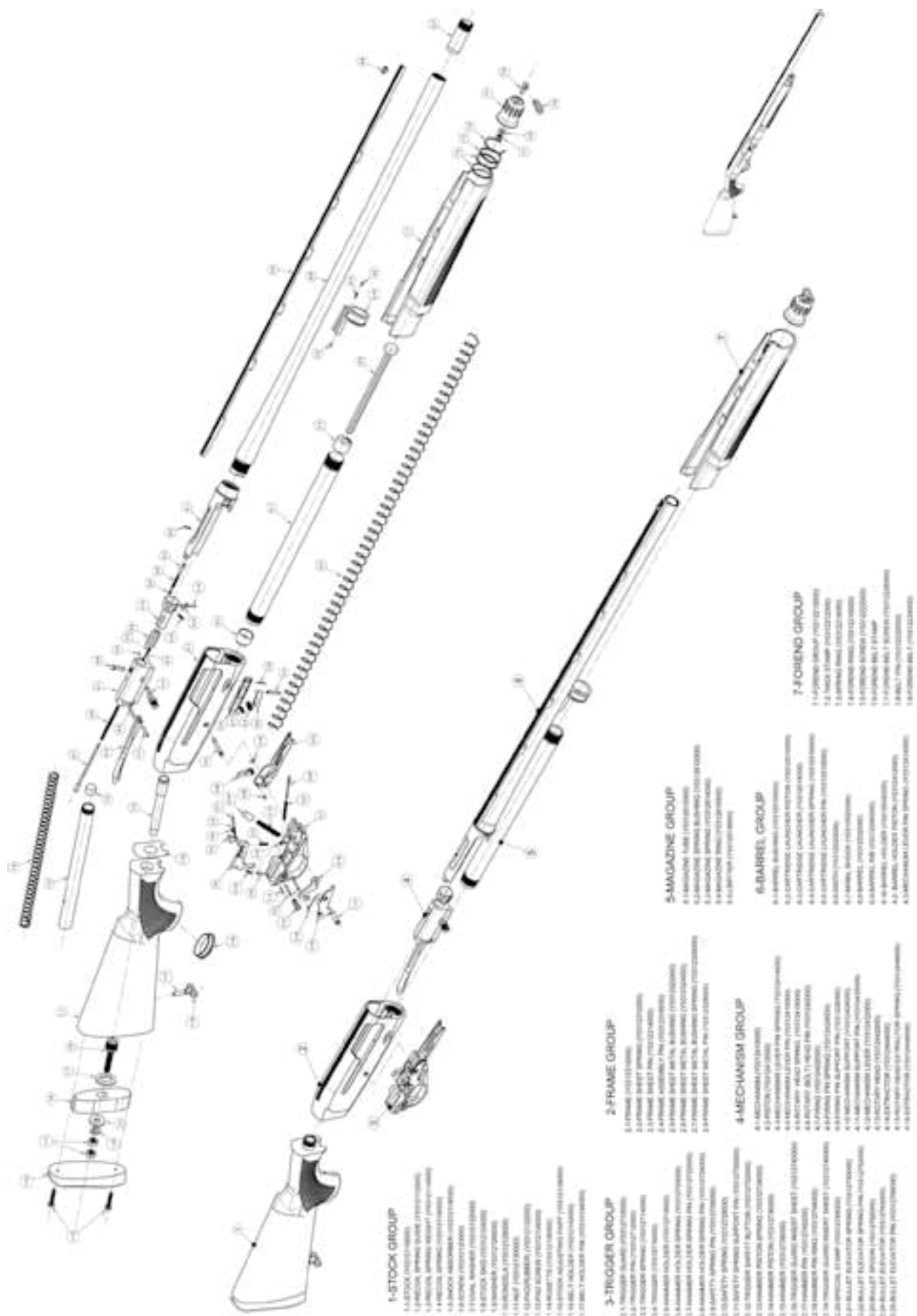
- Every time you use your gun it is advised to clean it in order to remove all corroding agents (humidity, powder or lead residues etc.) which can in time alter a few parts.
- In order to perform a standard cleaning, it is sufficient to utilize a good solvent, cleaning oil, and a small brush.
- For a deeper cleaning, please contact your local gunsmith

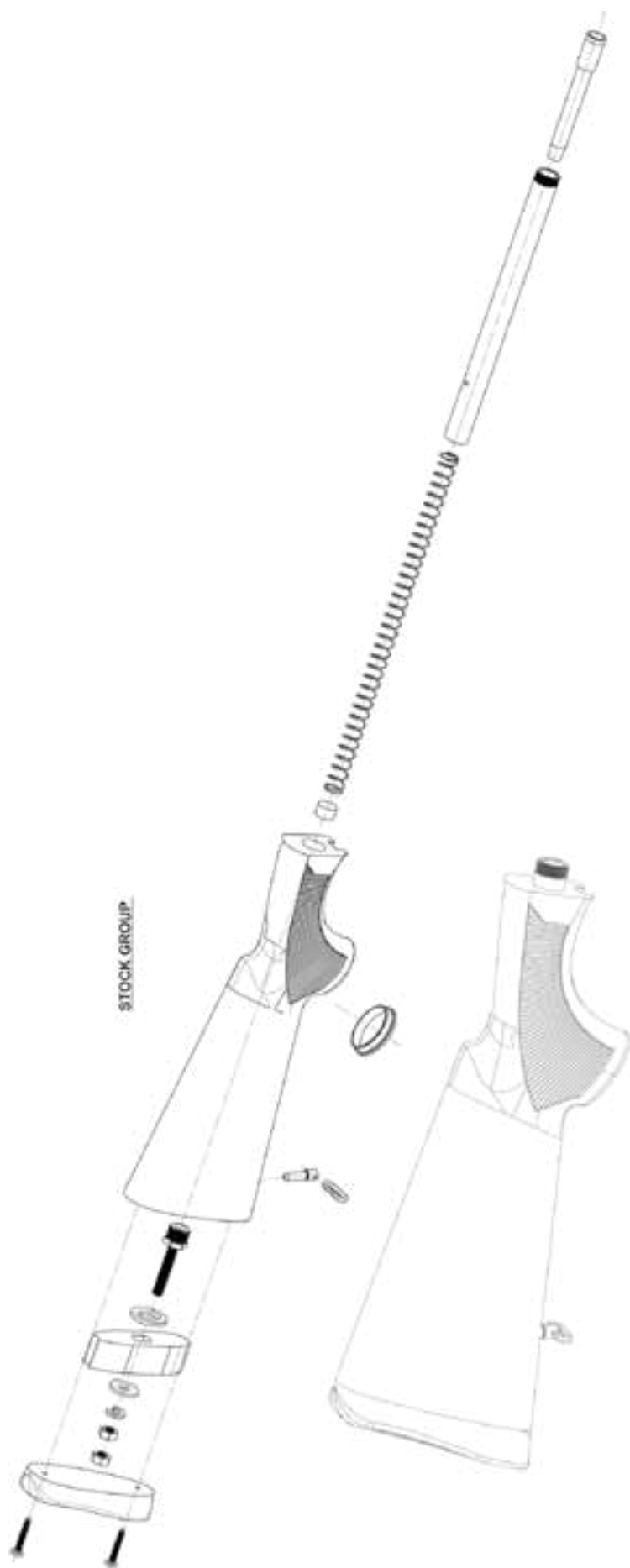
Warning: Always use a cleaning rod from the chamber end of the barrel.

ORDINARY & EXTRAORDINARY MAINTENANCE

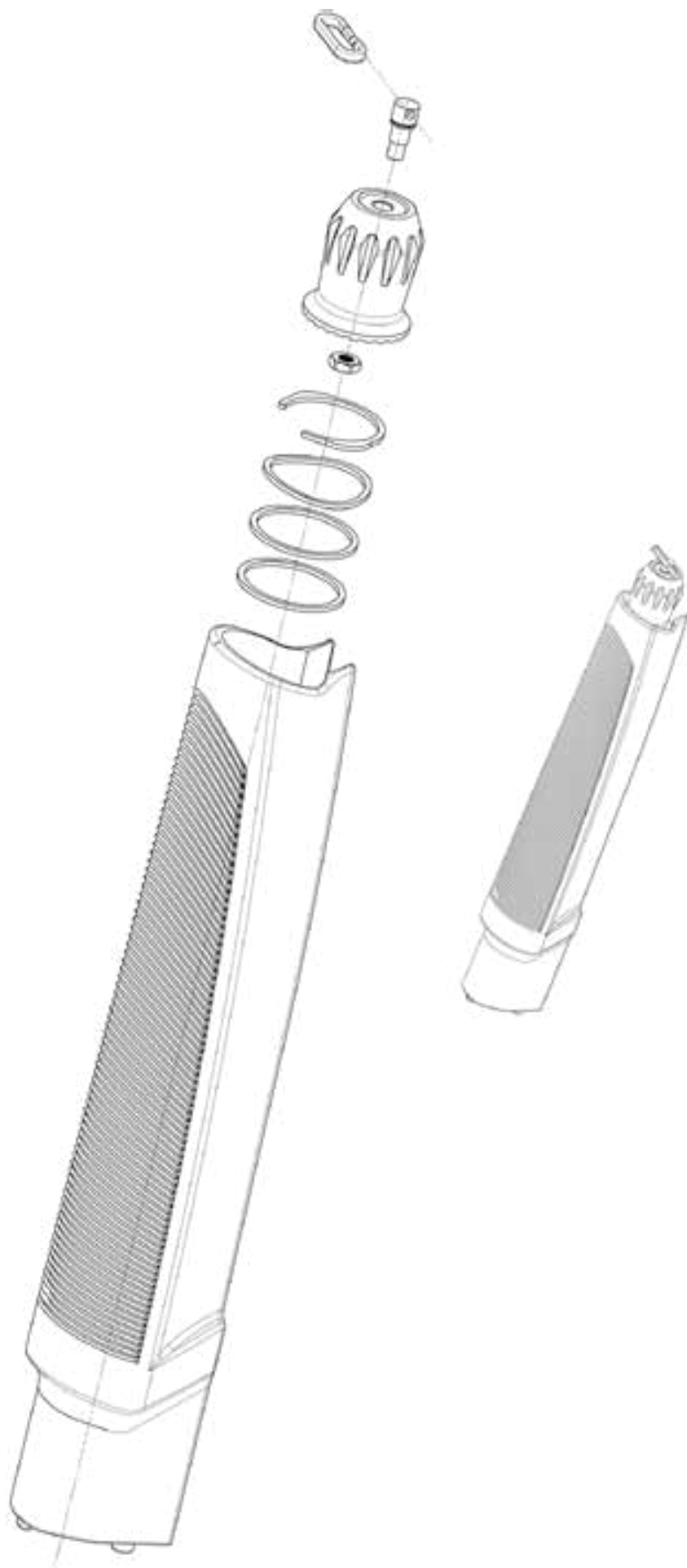
- Before conducting any sort of maintenance, make sure the firearm is unloaded.
- By “ordinary maintenance” we refer to measures the user should take to keep the gun in good working conditions.
- An “Extraordinary maintenance” implies the replacement of broken parts and therefore disassembling the gun. In this case only authorized personnel or a qualified gunsmith should handle the task.
- Also a long period of heavy use or inactivity requires an extraordinary maintenance; your gun should be taken to a qualified gunsmith to have the action disassembled for professional cleaning and lubrication.
- Your gunsmith will advise the best lubricant for the good maintenance of your gun.
- Do not leave oil residues when cleaning and lubricating your firearm.
- Make sure that the mechanism of the weapon is easy; if it starts to stiffen, or if corrosion is starting on some essential parts, you should bring your gun to competent, professional personnel.
- Do not use pure silicon or lanolin.
- In the following pages you will find exploded views with a list of all parts. When ordering parts, it's important to specify date of purchase, serial number, model, caliber and item reference of the part/s needed.
- If the gun has a problem that you cannot fix, **DO NOT FIRE**, send it to an authorized center for a check-up. If you try to fix it personally, you may put in serious danger yourself and the people near you. Always pay great attention and handle the gun very carefully, in order to avoid terrible accidents which may change your life and that of others.

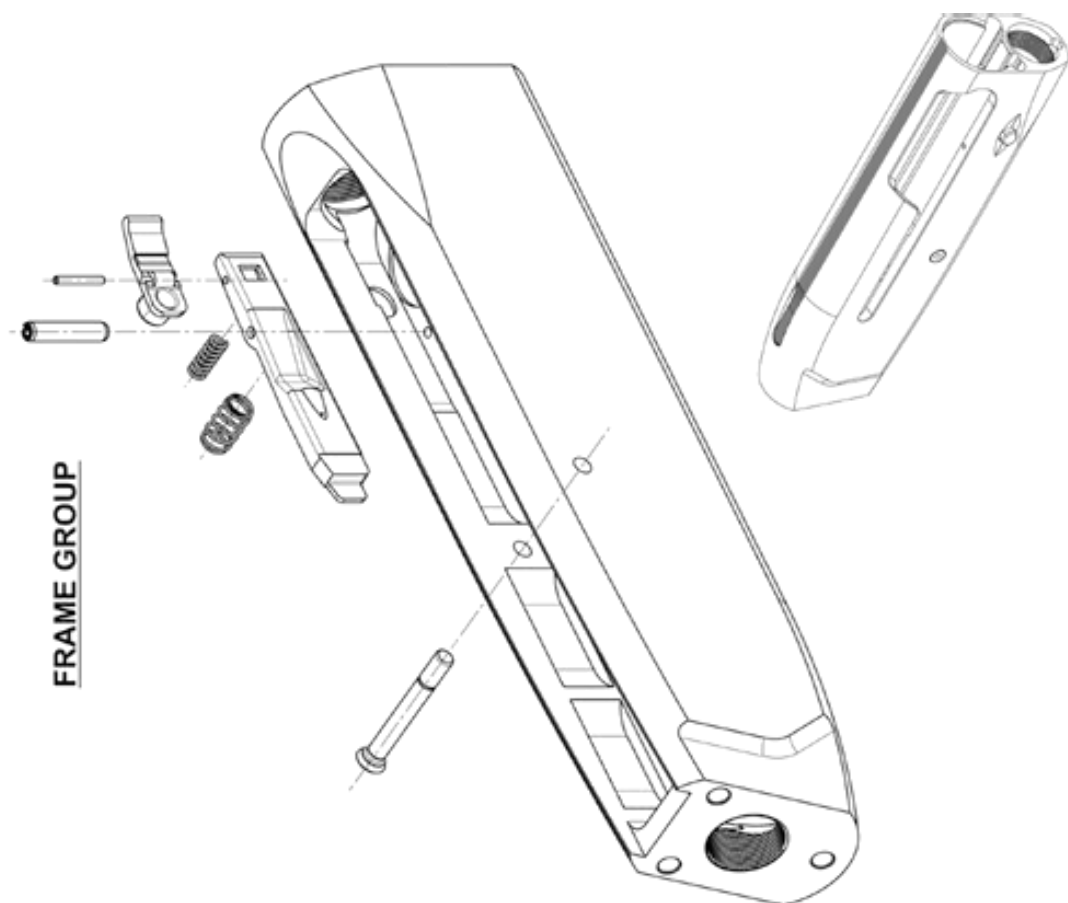
EXPLODED VIEWS

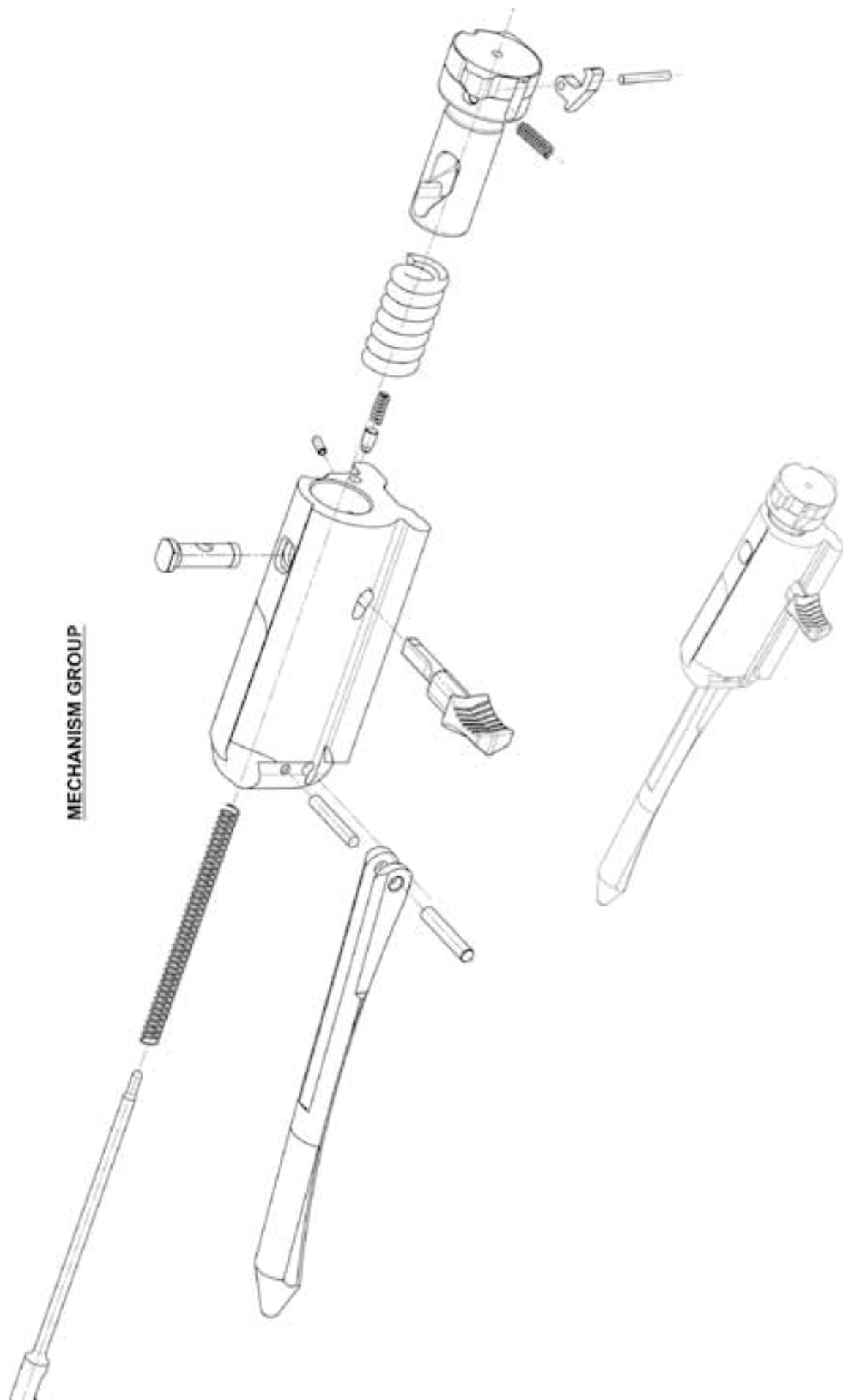


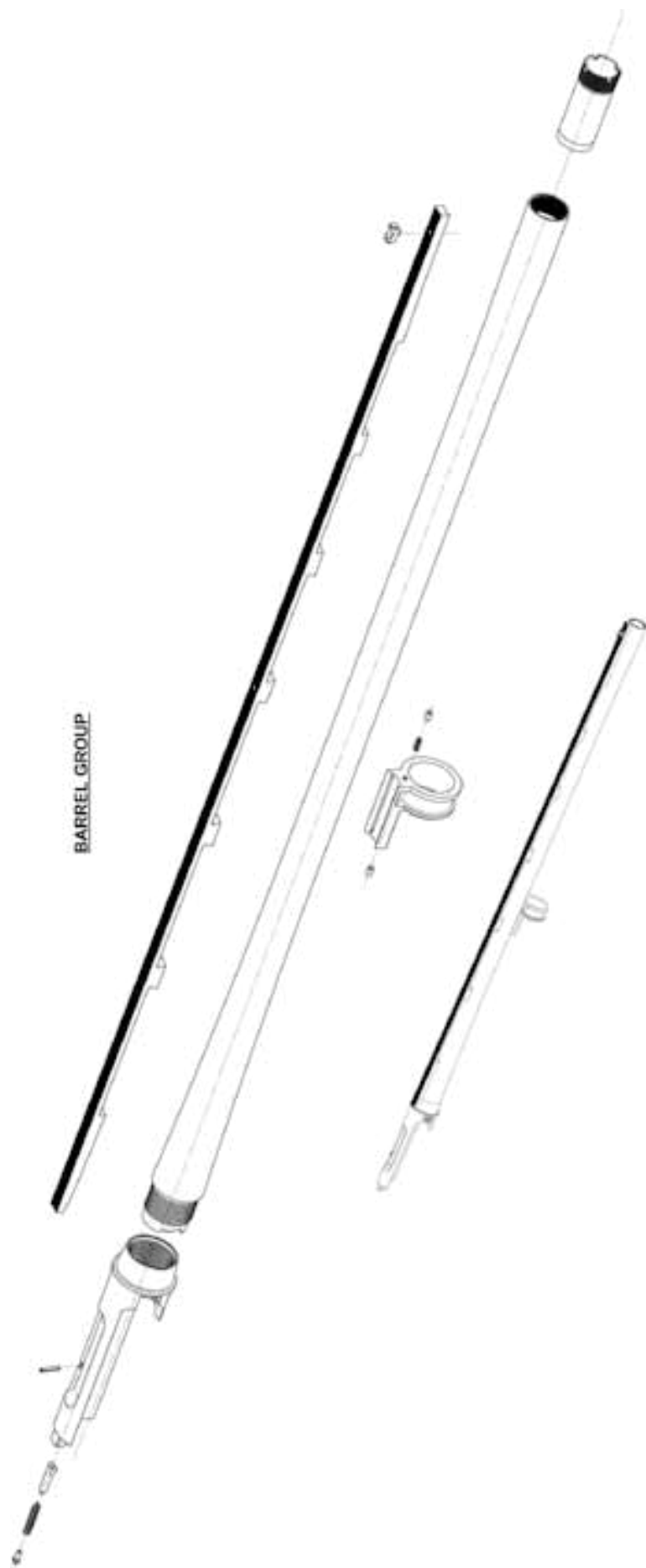


FOREND GROUP

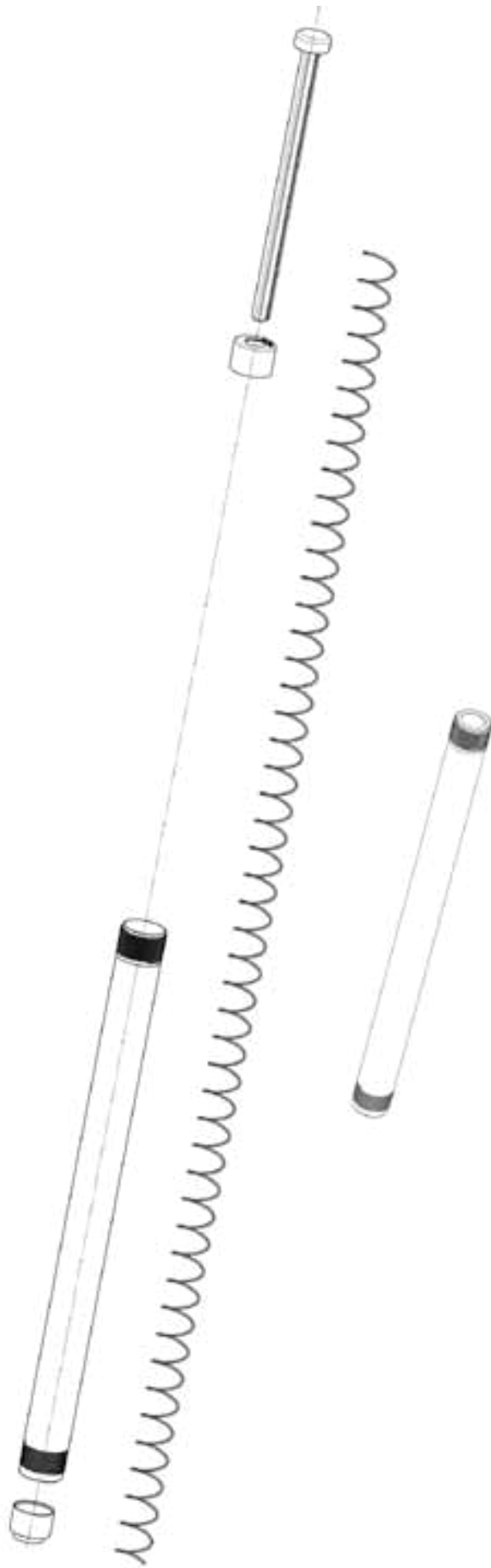


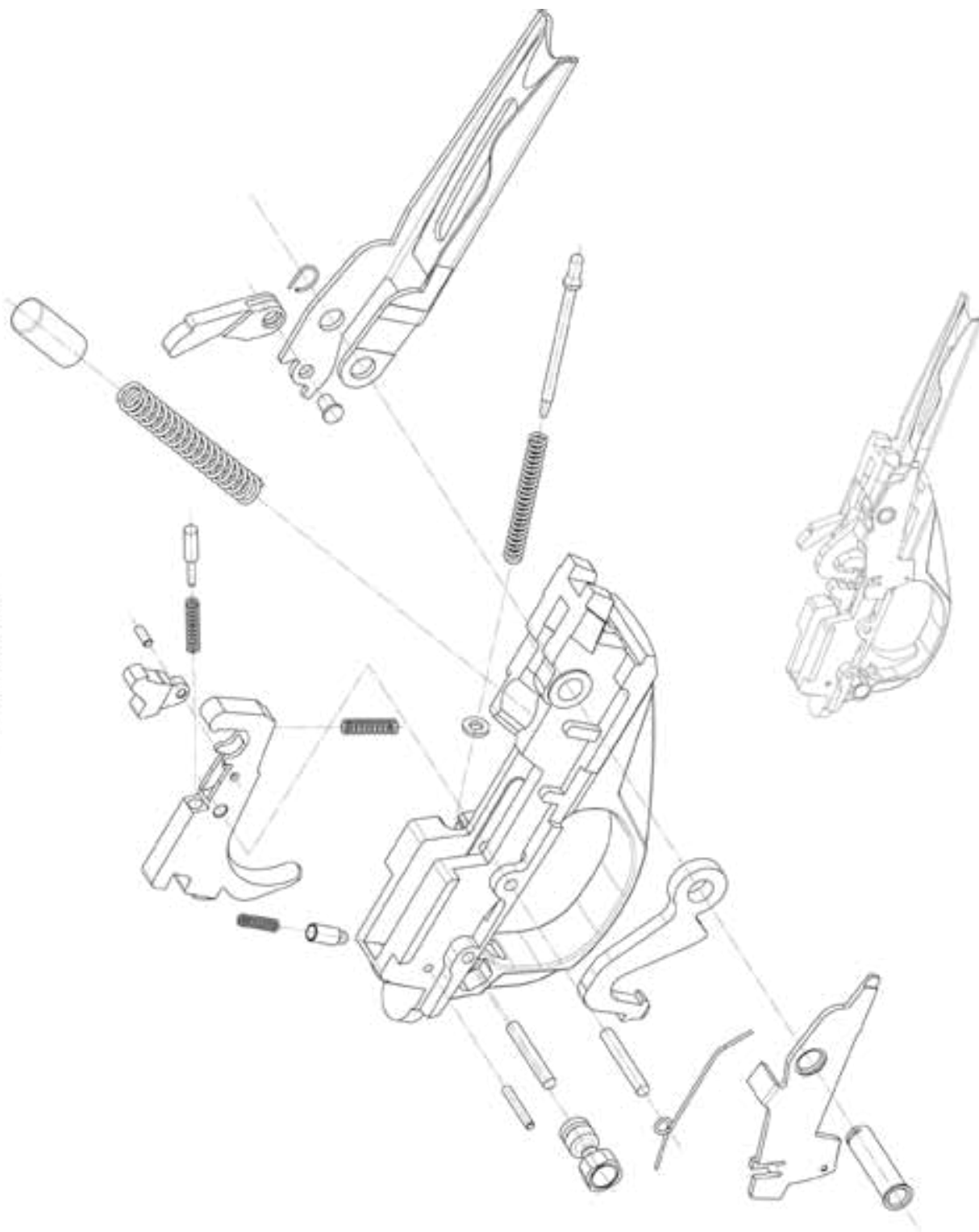






MAGAZINE GROUP





WARRANTY CONDITIONS

The manufacturer guarantees that our products are scrupulously checked against defects in materials, workmanship and aesthetical and functioning problems.

In case you find a defect in one of our products, you should immediately contact Chiappa Firearms or where you have bought your gun. All warranty work will be performed by Chiappa Firearms.

ATTENTION: All customers returning product for warranty service must first obtain a return authorization from Chiappa Firearms. The request for a return authorization may be obtained through our web site, email or phone. Information required is name and address, model, serial number, and defect. It is the customer's responsibility for adequately packaging the product to prevent shipping damage.

The manufacturer guarantees, for a year after the purchase date, the free substitution of parts for defects which have been found out during use: wear of parts which shouldn't be subject to wear, or excessive wear of parts subject to wear. The customer will have to give evidence of the purchase date with a bill or other valid proof.

In case the defect under cover of guarantee is not repairable, the manufacturer will provide for a free substitution of the weapon.

THE MANUFACTURER RESERVES THE RIGHT OF DEFINING THE TYPE OF DEFECT OF THE FIREARM, AND THEREFORE TO STATE WHETHER THE DEFECT IS COVERED BY GUARANTEE

The manufacturer's decision will be fair but final.

The manufacturer will be allowed a timing of 60 days for repair under guarantee, and 90 days for free substitution.

Should the manufacturer become aware of a defect of a product during the guarantee period, the defective part will be replaced free of charge.

The guarantee does not cover parts subject to wear and corrosion

ATTENTION: delivery expenses to and from the service center are not covered by the guarantee and will be charged to the customer.

THE GUARANTEE IS VOID IN CASE:

- Inadequate ammunition has been used (any ammunition but those commonly on sale, reloaded ammunition, different from caliber and specification indicated on the firearm barrel)
- The firearm failed to be provided proper maintenance and cleaning
- The firearm has been modified without our prior consent
- Unauthorized, inadequate or incorrect repairs have been carried out
- Non original spare parts were used
- Parts subject to wear and corrosion
- Damage (improper use of the gun by the user)
- Expired guarantee

In the above cases the repair, if completed, will be charged to the customer

In case, for any valid reason, you do not have the possibility to obtain repair under guarantee at the shop where you bought the firearm, you may contact us directly for warranty service or questions:

USA - Phone: +1-937-835-5000

e-mail: info@chiappafirearms.com

CANADA (Murray Charlton) – Phone +1-778.426.3884

e-mail: murray.mdcent@gmail.com

REST OF THE WORLD - Phone: +39/030/9749065

e-mail: info@chiappafirearms.com

**This instruction manual must always follow the firearm,
also in case of change of ownership**

Procedure for the use of warranty

REGISTER your firearm in the proper section of our website:

<http://www.chiappafirearms.com/registration>

CONTACT the gunshop where the product was bought, or the Chiappa Firearms facility for USA, Canada or Rest of the World as indicated above. You will receive a RMA number and the instructions to return the gun.

FILL IN the attached form, which will accompany the return firearm. Don't forget to include the RMA number, a description of the defect and a copy of the proof of the purchase indicating the purchase date.

SHIP the weapon to Chiappa Firearms in its original packing, according to the instructions you have received.

ATTENTION: the returned firearm must be protected with adequate packaging; any damages occurred during transportation and handling will be the customer's responsibility

REPAIR UNDER GUARANTEE

NdR NDR : _____

**Please write in the above box
the Repair Authorization Number**

1. Customer data:

- Name: _____
- Address : _____
- Town : _____
- ZIP Code : _____
- Phone : _____ Available from ____ to ____
- Fax : _____
- Email address: _____

2. Product information:

- Model : _____
- Serial number : _____

3. Gun Shop - dealer:

- Purchase date : _____
- Dealer name : _____
- Dealer address: _____

4. Description of defect:

Documents to attach: Proof of purchase with date



1415 Stanley Avenue
Dayton, OH 45404

www.chiappafirearms.com
email: info@chiappafirearms.com