

LIGHTWEIGHT. ACCURATE. DEPENDABLE.



**CHRISTENSEN
ARMS®**

**BOLT
RIFLES**





TABLE OF CONTENTS

4 - Warnings
5 - Rules of Safety
6 - Structure Model
7 - Models
11 - Safety Features
12 - Safe and Long-Term Storage
13 - General Information
14 - Ammunition
16 - Assembly
17 - Loading
18 - Loading the Magazine
19 - Unloading the Firearm
20 - Firing
20 - Disassembly
21 - Reassembly
21 - Functional Check
22 - Cleaning
24 - Exploded Diagrams
26 - Warranty, Guarantee and Disclaimer
27 - Return and Refund Policy



WARNINGS

THROUGHOUT THIS MANUAL YOU WILL FIND WARNINGS AND/OR CAUTIONS IN BOLD PRINT. ALL WARNINGS AND CAUTIONS SHOULD BE READ CAREFULLY AND FOLLOWED COMPLETELY. WARNINGS DISCUSS ISSUES THAT COULD RESULT IN DAMAGE TO YOUR FIREARM, PERSONAL INJURY OR DEATH TO YOU OR BYSTANDERS. CAUTIONS HIGHLIGHT ISSUES THAT COULD RESULT IN DAMAGE OR MALFUNCTION OF YOUR FIREARM.

THIS MANUAL PROVIDES INSTRUCTIONS ON THE OPERATION AND MAINTENANCE OF YOUR CHRISTENSEN ARMS FIREARM. READ THIS MANUAL CAREFULLY BEFORE USING YOUR FIREARM. YOUR SAFETY AND THE SAFETY OF OTHERS DEPEND ON YOUR KNOWLEDGE OF THE FIREARM AND YOUR ATTENTION TO FIREARM SAFETY IN GENERAL. PLEASE STUDY THE SAFETY RULES NOTED IN THIS MANUAL. IT IS YOUR RESPONSIBILITY TO ASSURE THAT YOU COMPLY WITH ALL FEDERAL, STATE AND LOCAL LAWS WITH REGARDS TO THE PURCHASE, OWNERSHIP, USE AND STORAGE OF YOUR FIREARM.

THIS MANUAL COVERS SEVERAL CHRISTENSEN ARMS FIREARM MODELS. INSTRUCTIONS REFERRING TO SPECIFIC MODELS WILL BE CLEARLY MARKED.

CHRISTENSEN ARMS IS NOT LIABLE FOR ANY IMPROPER USE OF THE FIREARM AND SHALL NOT BE RESPONSIBLE FOR DAMAGE OF PROPERTY, INJURY OR DEATH RESULTING FROM EITHER ACCIDENTAL OR INTENTIONAL MISUSE OF THIS FIREARM.

CHRISTENSEN ARMS SHALL NOT BE RESPONSIBLE FOR MALFUNCTIONS OF THE FIREARM WHEN IT IS USED FOR PURPOSES FOR WHICH THE FIREARM WAS NOT INTENDED. CHRISTENSEN ARMS WILL NOT HONOR CLAIMS WHICH MAY RESULT FROM CARELESS OR IMPROPER HANDLING, UNAUTHORIZED ADJUSTMENTS, PARTS REPLACEMENT, CORROSION, NEGLIGENCE, USE OF THE WRONG TYPE OR CALIBER OF AMMUNITION OR THE USE OF AMMUNITION OTHER THAN ORIGINAL HIGH QUALITY COMMERCIALY MANUFACTURED AMMUNITION IN GOOD CONDITION.

WARNING: IT IS YOUR RESPONSIBILITY TO ASSURE THAT YOUR FIREARM IS HANDLED, FIRED AND STORED SAFELY AND RESPONSIBLY AT ALL TIMES.

RULES OF SAFETY

Before handling the rifle, become familiar with all of the safety rules in this manual.

1. ALWAYS keep the muzzle pointed in a safe direction. A safe direction is a direction in which no damage or injury would occur with an accidental discharge. In other words, ALWAYS treat the rifle as if it were loaded and about to discharge.

2. Before handling a rifle, ALWAYS check the chamber and magazine to be certain they do not contain ammunition.

3. Your rifle should be unloaded when not in use. Load your rifle ONLY when you are in the field or at the range ready to fire. Unloaded means no ammunition in the chamber or magazine.

4. Do NOT rely on your rifle's safety to prevent discharge (with or without pressure on the trigger).

5. Never touch the trigger until you are ready to shoot. Keep your fingers outside of the trigger guard until your sights are on target and you are ready to fire.

6. Be sure of your target and what is beyond it. Know the final resting place of your bullet before you fire.

7. Insure the use of proper ammunition of the correct caliber. The caliber is shown on the side of the barrel.

8. If your rifle fails to fire when the trigger is pulled, handle with care. Delayed discharge is always a possibility and must be accounted for.

9. Always wear proper eye and ear protection when shooting.

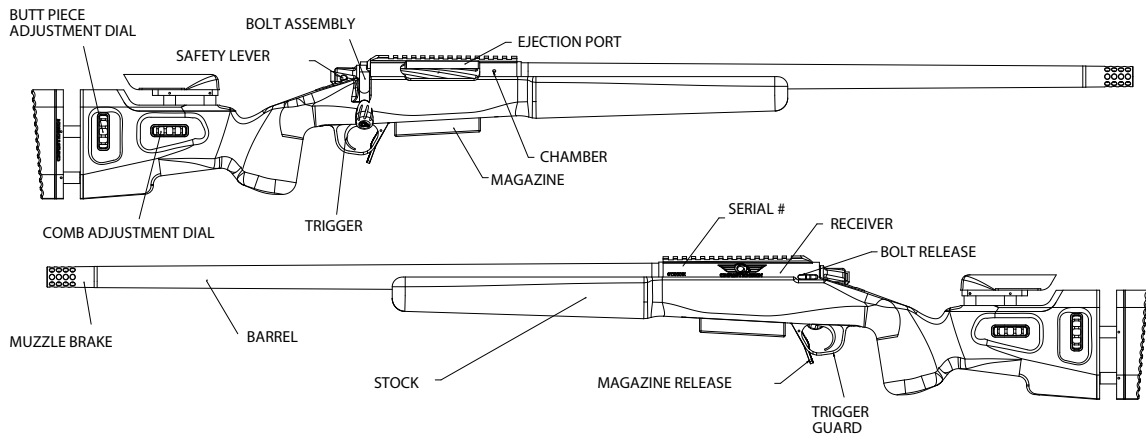
10. Be sure the barrel is clear of obstructions before shooting. Even a tiny obstruction can cause serious damage or injury.

11. Know your rifle. Become familiar with its mechanisms and handling characteristics.

BOLT RIFLE STRUCTURE MODEL

Congratulations on your choice of a Christensen Arms rifle. With proper care, your rifle will give you many years of dependable use. You will find the serial number of the rifle on the left side of the receiver (Figure. 1).

Always store your rifle unloaded in a secure, dry place, where it will not be damaged and where only authorized persons can access it. Keep cartridges stored separately and securely.



SUMMIT CARBON



Weight - 6 lbs. (may vary based on options)

Accuracy - 1/2 MOA accuracy guarantee with appropriate ammunition



SUMMIT STEEL



Weight - 7.3 lbs. (may vary based on options)

Accuracy - 1/2 MOA accuracy guarantee with appropriate ammunition



TACTICAL FORCE MULTIPLIER (TFM) CARBON



Weight - 7.1 lbs. (may vary based on options)

Accuracy - 1/2 MOA accuracy guarantee with appropriate ammunition



TACTICAL FORCE MULTIPLIER (TFM) STEEL



Weight - 9.3 lbs. (may vary based on options)

Accuracy - 1/2 MOA accuracy guarantee with appropriate ammunition



CLASSIC CARBON



Weight - 6.7 lbs.

Accuracy - 1 MOA accuracy guarantee with appropriate ammunition



CLASSIC STEEL



Weight - 7.7 lbs.

Accuracy - 1 MOA accuracy guarantee with appropriate ammunition



CARBON RANGER

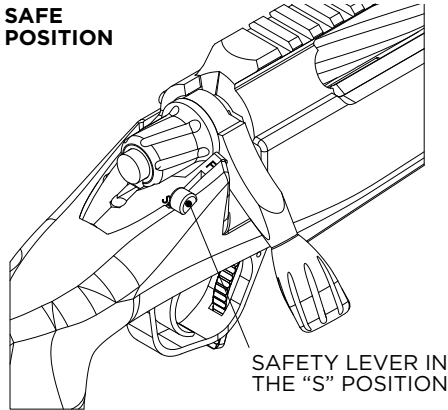
Weight - 20.9 lbs.



SAFETY FEATURES

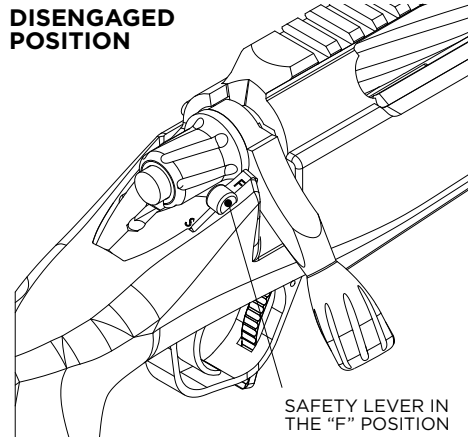
Your safety lever is located to the right of the bolt shroud. It provides some degree of protection from accidental or unintentional discharge under normal usage when properly engaged and in good working condition. It is NOT a substitute for following the rules of safety, nor common sense. To engage the safety, move the safety lever all the way back to the "S" position.

SAFE POSITION



Keep the safety in the "S" position at all times. ONLY when you are ready to fire the rifle, push the safety lever to the "F" position. Do not touch the trigger while moving the safety lever. Keep the area inside the trigger guard clear until you are ready to fire the rifle. Never pull the trigger when the safety lever is in the "S" position.

DISENGAGED POSITION



SAFE STORAGE

Always make sure both the chamber and magazine are unloaded before placing the firearm in storage. Store your rifle in a securely locked gun safe. If you do not have a gun safe, remove the bolt from your rifle and store it separately from the rifle in a secure location. Store your ammunition in a separate location from the rifle and separate from the bolt assembly.

WARNING: ALWAYS CHECK TO MAKE SURE YOUR FIREARM IS UNLOADED. ALWAYS STORE YOUR FIREARM IN A SAFE LOCATION SEPARATE FROM THE AMMUNITION.

WARNING: IF YOU HAVE MORE THAN ONE SIMILAR FIREARM, MAKE SURE THAT YOU SPECIFICALLY IDENTIFY THE REMOVED ASSEMBLY WITH ITS ORIGINAL FIREARM AS THE ASSEMBLIES MAY NOT BE INTERCHANGEABLE.

GENERAL INFORMATION

All Christensen Arms firearms are manufactured to perform at a high degree of accuracy, reliability and durability.

WARNING: YOUR CHRISTENSEN ARMS FIREARM WAS DESIGNED AND TESTED TO FUNCTION WITH ITS ORIGINAL COMPONENTS. ALTERATIONS TO THE FIREARM IN ANY WAY INCLUDING BUT NOT LIMITED TO ALTERING ORIGINAL COMPONENTS OR REPLACING PARTS WITH AFTERMARKET (NON-CHRISTENSEN ARMS) PARTS OR COMPONENTS CAN CAUSE MALFUNCTIONS AND WILL VOID YOUR WARRANTY. DO NOT USE SUBSTITUTE PARTS UNLESS THEY ARE MANUFACTURED OR RECOMMENDED BY CHRISTENSEN ARMS.

THE TIMNEY TRIGGER SYSTEM

The Timney Trigger is preset to factory pull weight. Since it was founded in 1946, Timney Manufacturing has built a reputation based on the quality of its products. Because of the precision machining and workmanship that goes into each and every Timney product, they are often referred to as "The World's Finest Triggers" and they are used exclusively by some of the world's best custom gun manufacturers.

Made in the USA.

BARREL LIFE

The Christensen Arms Custom Carbon Barrel is an elite choice and upgrade to any platform. The custom carbon barrel consists of a stainless steel, select-match or match grade barrel.

The steel profile is turned to a proprietary contour and then wound in carbon fiber utilizing a patented process. Chambered to match grade specifications, your Christensen Arms carbon barrel will give the accuracy performance enhancements that are desired in a high-end rifle.

A few of the benefits to our patented carbon barrel system are listed below:

1. A lightweight barrel with the accuracy of a target bull barrel.
2. Our carbon-fiber barrel is three times stiffer than a steel barrel of equal weight, which reduces flex & harmonics, increasing precision.
3. The Christensen Arms patented carbon layup process produces a barrel shell that has zero thermal expansion coefficients, which brings you shot after shot consistency.

4. Performs well in any climate or temperature, corrosion resistant.

5. Dissipates heat from the stainless steel liner 300% faster than steel.

6. Barrel life can be extended by 25%.

APPEARANCE

Christensen Arms Bolt Rifles are an industrial product and bears finishes appropriate for its intended purposes. Christensen Arms rifles are all thoroughly test fired before shipping. New rifles will normally show evidence of this firing. If the receiver looks light or uneven in color, which is typically due to dryness, apply a light coat of oil on the metallic surface and this will improve the appearance. The receivers are made of stainless steel for its exceptional strength.

AMMUNITION

1. Use only high quality, original factory manufactured ammunition. Don't oil cartridges. Don't spray aerosol type lubricants, preservatives or cleaners directly onto cartridges or where excess spray may flow into contact with cartridges. Lubricant or other foreign matter on cartridges can cause potentially dangerous ammunition malfunctions. Use only ammunition of the caliber for which your firearm is chambered. The proper caliber is permanently engraved on the barrel of your firearm; never attempt to use ammunition of any other caliber.

2. The use of reloaded, "remanufactured," hand loaded or other nonstandard ammunition voids all warranties. Reloading is a science and improperly loaded ammunition can be extremely dangerous. Severe damage to the firearm and serious injury to the shooter or to others may result. Always use ammunition that complies with the industry performance standards established by the Sporting Arms and Ammunition Manufacturers' Institute, Inc. of the United States (SAAMI).

3. Firearms may be severely damaged, and serious injury to the shooter or others may result from any condition causing excessive pressure inside the chamber or barrel during firing.

Excessive pressure can be caused by obstruction in the barrel, propellant powder overloads or by the use of incorrect or defectively assembled cartridges. In addition, the use of a dirty, corroded or damaged cartridge can lead to a burst cartridge case and consequent damage to the firearm and personal injury from the sudden escape of high-pressure propellant gas within the firearm's mechanism.

4. Immediately stop shooting and check the barrel for a possible obstruction whenever:

- a.** You have difficulty in, or feel unusual resistance in chambering a cartridge, or
 - b.** A cartridge misfires (does not go off), or
 - c.** The mechanism fails to extract a fired cartridge case, or
 - d.** Unburned grains of propellant powder are discovered spilled in the mechanism, or
 - e.** A shot sounds weak or abnormal.
- f.** In such cases it is possible that a bullet is lodged part way down the barrel. Firing a subsequent bullet into the obstructed barrel can damage the firearm and cause serious injury to the shooter or bystanders.
- 5.** Bullets can become lodged in the barrel:
- a.** If the cartridge has been improperly loaded with insufficient propellant, or if the propellant fails to ignite. (Ignition of the cartridge primer alone may push the bullet out of the cartridge case, but usually does not

generate sufficient energy to expel the bullet completely from the barrel), or

b. If the bullet is not properly seated in the cartridge case. When such a cartridge is extracted from the chamber without being fired, the bullet may be left behind in the bore at the point where the rifling begins. Subsequent chambering of another cartridge may push the first bullet further into the bore.

6. If there is any reason to suspect that a bullet is obstructing the barrel, immediately unload the firearm, remove the bolt and look through the bore. It is not sufficient to merely look in the chamber. A bullet may be lodged some distance down the barrel where it cannot easily be seen. If the bullet can be easily removed with a wood or brass dowel, (using hand pressure only, never "hammer" a bullet lodged in the bore) clean any unburned powder grains from the bore, chamber and mechanism before resuming shooting. If the bullet cannot be dislodged by tapping it with a cleaning rod, take the firearm to a gunsmith.

7. Dirt, corrosion, or other foreign matter on a cartridge can impede complete chambering and may cause the cartridge case to burst upon firing. The same is true of cartridges which are damaged or deformed.

8. Don't oil cartridges, and be sure to wipe the chamber clean of any oil preservative before commencing to shoot. Oil interferes with the friction between cartridge case and chamber wall that is necessary for safe functioning, and subjects the firearm to stress similar to that imposed by excessive pressure.

9. Use lubricants liberally on the moving parts of your firearm. Avoid excessive spraying of any aerosol gun care product, especially where it may get on ammunition. All lubricants, and aerosol spray lubricants in particular, can penetrate cartridge primers and cause misfires. Some highly penetrative lubricants can also migrate inside cartridge cases and cause deterioration of the propellant powder; on firing, the powder may not ignite. If only the primer ignites, there is a danger that the bullet may become lodged in the barrel.

WARNING: IF A BULLET IS IN THE BORE, DO NOT ATTEMPT TO SHOOT IT OUT BY USING ANOTHER CARTRIDGE, OR BY BLOWING IT OUT WITH A BLANK OR ONE FROM WHICH THE BULLET HAS BEEN REMOVED. SUCH TECHNIQUES CAN GENERATE EXCESSIVE PRESSURE, DAMAGE THE FIREARM AND CAUSE SERIOUS PERSONAL INJURY.

WARNING: USE OF INCORRECT AMMUNITION CAN CAUSE FIREARM DAMAGE, PERSONAL INJURY OR DEATH. MAKE ABSOLUTELY CERTAIN THAT YOU ARE USING CARTRIDGES DESIGNED FOR YOUR FIREARM. DO NOT FIRE OLD, CORRODED, DEFORMED OR HAND LOADED AMMUNITION. IF YOU HAVE ANY QUESTIONS, CONTACT CHRISTENSEN ARMS BEFORE FIRING.

WARNING: DO NOT FIRE SABOTED AMMUNITION FROM YOUR RIFLE. THE SABOT COULD LODGE IN YOUR MUZZLE BRAKE CAUSING FIREARM DAMAGE AND POTENTIAL INJURY OR DEATH.

NOTE: Some types/brands of ammunition have unique characteristics (e.g. extremely light or heavy projectiles, particularly soft cartridge cases, propellant that burns unusually slower or more rapidly), which can reduce its reliability.

Christensen Arms recommends that you purchase and test a small quantity of any type of ammo in your firearm before you buy large quantities.

ASSEMBLY

INITIAL ASSEMBLY

Your firearm is shipped completely assembled.

However, it may have an adjustable butt stock. The butt stock may require adjustment in length for optimal fit.

Your Trigger is adjusted at the factory. All adjustments to the Trigger must be done at our factory.

ADJUSTING THE BUTT STOCK

To adjust the butt stock, turn the adjustment nut to the desired position.

WARNING: IF YOU MOUNT A SCOPE TO YOUR RIFLE, MAKE SURE THE SCOPE IS MOUNTED FAR ENOUGH FORWARD SO THAT IT WILL NOT IMPACT YOUR FACE DURING RECOIL. CHECK THE DISTANCE BETWEEN THE SCOPE AND YOUR FACE WHEN YOU ARE IN THE FIRING POSITION. KEEP IN MIND THAT YOUR EYE WILL BE CLOSER TO THE SCOPE WHEN SHOOTING FROM PRONE OR FROM THE BENCH THAN WHEN SHOOTING OFF-HAND. WHEN IN DOUBT INCREASE THE EYE RELIEF.

WARNING: READ THIS MANUAL COMPLETELY AS YOU INSPECT YOUR NEW CHRISTENSEN ARMS FIREARM. MAKE SURE YOU UNDERSTAND HOW TO

ASSEMBLE, OPERATE, DISASSEMBLE, MAINTAIN AND STORE YOUR FIREARM SAFELY BEFORE YOU USE IT.

Any time you disassemble and reassemble a firearm, you should conduct a functional check. Check your firearm's function as described in the reassembly section of this manual.

INITIAL CLEANING

Clean the bore of your firearm and lubricate the firearm as described in the Maintenance section below. Christensen Arms firearms are typically made tighter than other bolt rifle designs. Lubricate the rifle well before firing.

WARNING: TO ASSURE PROTECTION FROM CORROSION, YOUR CHRISTENSEN ARMS FIREARM HAS BEEN SHIPPED WITH PRESERVATIVE OIL IN THE BORE. FIRING THE FIREARM WITH PRESERVATIVE IN THE BORE CAN INCREASE PRESSURES, WITH POSSIBLE FIREARM DAMAGE PERSONAL INJURY OR DEATH. CLEAN AND DRY THE BORE BEFORE FIRING YOUR CHRISTENSEN ARMS FIREARM.

BREAKING IN CHRISTENSEN ARMS BARRELS

Christensen Arms recommends the following procedures to break in your new stainless steel match grade barrel.

1. For the first 10 shots, clean the barrel after every shot.
2. For the next 50 shots, clean the barrel after each five shot group.
3. Then to maintain quality of the barrel, clean after each use.

WARNING: FOLLOW ALL OF THE RULES OF SAFE GUN HANDLING ANYTIME YOU HANDLE YOUR FIREARM.

LOADING

WARNING: ALWAYS KEEP THE SAFETY IN THE "SAFE" POSITION UNTIL YOU ARE READY TO FIRE THE FIREARM. REMEMBER THAT THE SAFETY IS SIMPLY A MECHANICAL DEVICE, AND AS SUCH, COULD POSSIBLY FAIL. ALWAYS KEEP THE CHAMBER EMPTY AND THE FIREARM POINTED IN A SAFE DIRECTION EVEN WHEN THE SAFETY IS ON.

WARNING: INJURY, DEATH OR FIREARM DAMAGE CAN RESULT FROM FIRING A FIREARM WITH AN OBSTRUCTION IN THE BORE. BEFORE YOU FIRE MAKE SURE THAT THE BORE IS NOT OBSTRUCTED. NEVER ATTEMPT TO SHOOT OUT A BORE OBSTRUCTION.

WARNING: ALWAYS WEAR EYE AND EAR PROTECTION. MAKE SURE THAT BYSTANDERS ALSO WEAR EYE AND EAR PROTECTION.

WARNING: HANDLING OF CARTRIDGES AND FIRING FIREARMS MAY EXPOSE YOU TO LEAD. ALWAYS ASSURE THAT THERE IS ADEQUATE VENTILATION. ALWAYS WASH YOUR HANDS AFTER HANDLING AMMUNITION OR AFTER FIRING YOUR FIREARM.

WARNING: THIS FIREARM WILL FIRE WITHOUT A MAGAZINE IN IT. ALWAYS MAKE SURE THE CHAMBER IS EMPTY. THE FIREARM SHOULD NOT BE CONSIDERED TO BE SAFE UNLESS THE MAGAZINE IS REMOVED, THE SAFETY IS ON, THE BOLT IS OPEN AND THE CHAMBER IS EMPTY.

WARNING: THE FIRED CARTRIDGE CASE MAY BE HOT WHEN IT IS EJECTED FROM THE FIREARM.

WARNING: IF THE FIREARM FAILS TO FIRE WHEN THE TRIGGER IS PULLED:

1. KEEP THE FIREARM POINTED AT THE TARGET.
2. WAIT 15 SECONDS TO ALLOW A POSSIBLE "HANGFIRE" TO GO OFF.
3. CHECK TO SEE IF THE SAFETY IS ENGAGED BY MISTAKE. IF SO, PUSH THE SAFETY TO THE "FIRE" POSITION AND FIRE.
4. IF THE FIREARM STILL DOESN'T FIRE, BE CAUTIOUS, THE CARTRIDGE MAY DISCHARGE WHEN THE BOLT IS OPENED.

5. OPEN THE BOLT QUICKLY AND UNLOAD THE FIREARM.

6. EXAMINE THE FIREARM AND CARTRIDGE CAREFULLY TO IDENTIFY THE CAUSE OF THE MALFUNCTION.

LOADING THE MAGAZINE

The detachable magazine can be loaded when removed from the rifle by pressing the cartridge down into the forward portion of the magazine then sliding back towards the rear.

Keep your magazines clean and dry. Never pound the magazine into the rifle. Insert the magazine completely, then check to assure it is locked into the rifle by tugging downward.

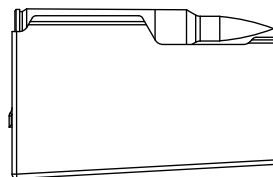
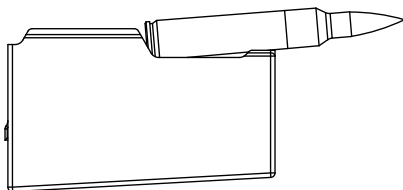
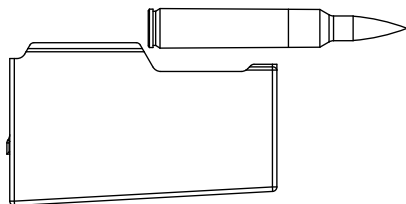
CAUTION: CURRENTLY CHRISTENSEN ARMS SELLS MAGAZINES THAT ARE DESIGNED FOR CAPACITIES OF 3, 5 AND 10 ROUNDS. DO NOT EXCEED THESE CAPACITIES. DUE TO VARIATIONS IN DIAMETERS OF

VARIOUS BRANDS OF CARTRIDGES, IT MAY BE POSSIBLE TO FORCE AN ADDITIONAL CARTRIDGE INTO A MAGAZINE. DOING SO MAY DAMAGE YOUR MAGAZINE AND LEAD TO ELEVATED MALFUNCTION RATES.

1. Place the safety selector on "SAFE."
2. Push the magazine up into the receiver until the magazine catch engages and holds the magazine.
3. Pull down on the magazine slightly to make sure it is locked into place.

CAUTION: KEEP YOUR MAGAZINES CLEAN AND DRY. NEVER POUND THE MAGAZINE INTO THE RIFLE. INSERT THE MAGAZINE COMPLETELY INTO THE RIFLE THEN TUG DOWNWARD TO ASSURE IT IS SECURELY LOCKED INTO PLACE.

NOTE: The cartridges in a fully loaded magazine can be packed tight and require firm upward pressure to assure that the magazine catch holds the magazine.



UNLOADING THE FIREARM

WARNING: ALWAYS ASSUME ALL FIREARMS ARE LOADED. ANYTIME YOU HANDLE A FIREARM, YOU SHOULD IMMEDIATELY INSPECT IT TO ASSURE THAT IT IS COMPLETELY UNLOADED.

WARNING: YOU MUST KNOW HOW TO UNLOAD AND CLEAR YOUR FIREARM.

Keep your rifle cleared when not in use.

1. Place safety selector on "SAFE."
2. Remove the magazine by depressing the magazine catch lever and pulling the magazine down.
3. Open the bolt to extract any chambered cartridge.

CAUTION: THE MAGAZINE MAY FALL FREE WHEN THE MAGAZINE CATCH LEVER IS PRESSED. DON'T ALLOW THE MAGAZINE TO FALL ONTO A HARD SURFACE. DOING SO MAY DAMAGE THE MAGAZINE.

WARNING: IF MAGAZINE IS NOT REMOVED PRIOR TO THIS PROCEDURE, ANY ROUNDS LEFT IN IT WILL BE CHAMBERED, WHICH COULD LEAD TO AN UNINTENTIONAL DISCHARGE. THE RIFLE WILL FIRE WITH A ROUND CHAMBERED AND THE MAGAZINE REMOVED.

1. Always make sure the barrel is free of all obstructions before chambering a cartridge. Firing with an obstruction will cause damage to your rifle and may cause serious injury.
2. Open the action and remove the Bolt Assembly.
3. Check the barrel for any obstructions of debris by visually inspecting the bore.
4. Use a cleaning rod and patch to remove any obstructions. If they are insufficient for the job, take your rifle to a competent gunsmith.

FIRING

When firing, pay attention. If the noise or recoil of your firearm seems weak, stop everything, unload your rifle and be sure nothing is lodged in the barrel.

1. Aim at the target.
2. Set the safety selector to "FIRE."
3. Grip the rifle firmly, and pull the trigger increasing the pressure until the shot fires.

WARNING: KEEP THE SAFETY ON SAFE UNTIL YOU ARE READY TO SHOOT. UNLOAD AND CLEAR YOUR RIFLE BEFORE LEAVING THE SAFE POSITION.

CAUTION: DO NOT REST THE RIFLE ON ITS MAGAZINE WHEN YOU ARE LOADING OR FIRING IT. DOING SO CAN FORCE THE MAGAZINE UP INTO THE RIFLE, REDUCING THE RELIABILITY.

DISASSEMBLY

WARNING: ALWAYS UNLOAD YOUR FIREARM BEFORE CLEANING, LUBRICATION, DISASSEMBLY OR REASSEMBLY.

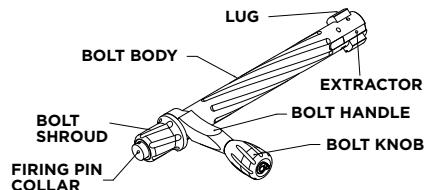
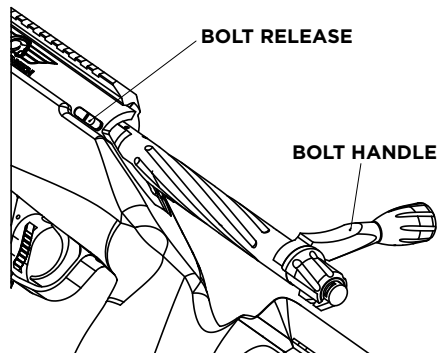
WARNING: ALWAYS WEAR SAFETY GLASSES WHEN DISASSEMBLING, MAINTAINING OR ASSEMBLING YOUR FIREARM.

CLEARING THE RIFLE

IMPORTANT: Put the safety selector on "SAFE." Remove the magazine, THEN pull back the bolt and check the chamber.

REMOVE BOLT ASSEMBLY

1. Point rifle in safe direction.
2. Insure rifle is not loaded.
3. Lift Bolt Handle and pull all the way back.
4. While depressing Bolt Release fully, slide the Bolt from the Rifle.



REASSEMBLY

1. Point rifle in a safe direction.
2. Insure rifle chamber is empty.
3. Align locking lugs on bolt with receiver and push the bolt forward.
4. Rotate bolt to closed position.

FUNCTIONAL CHECK

1. Remove the magazine, visually and physically inspect the chamber to assure that it is empty. Install an empty magazine and ensure that it is caught solidly by the magazine catch. Remove the magazine.
2. Place the safety on "SAFE." Squeeze the trigger. The firing pin should not fall.
3. Place the safety on "FIRE." Point the firearm in a SAFE direction. Squeeze the trigger and hold the trigger to the rear; the firing pin should fall.

IF YOUR RIFLE FAILS EITHER TEST, CALL CHRISTENSEN ARMS AT (888) 517-8855.

CLEANING

Clean your rifle after use. Badly fouled barrels can shoot inaccurately and will corrode much easier than carefully cleaned ones.

1. Remove the Bolt Assembly and magazine.
2. Place the rifle in upright position.
3. Select the correct caliber cleaning brush and attach to the cleaning rod.
4. Put the cleaning brush into the gun solvent.
5. ALWAYS push the cleaning/oiling patch from the breech end.
6. Push the cleaning brush through the barrel several times.
7. Remove the brush from the cleaning rod and attach the patch tip with a patch. It is advisable to occasionally remove copper fouling from the barrel. There are various solvents and mechanical cleaners for this purpose.
8. Repeat several times, using a clean patch each time, until the patch is not dirty.

9. Push a clean patch saturated with oil through the barrel.

10. Push a clean dry patch through the barrel to remove excess oil.

CLEANING SOLVENTS AND LUBRICANTS

The military generally uses a multipurpose chemical called CLP (cleaner, lubricant and preservative) sold commercially as "Break Free." Although it is useful if nothing else is available, armament engineers prefer individual, specialized products. A combination of military RBC (rifle bore cleaner) and LSA (lubricant, semifluid, automatic firearms) is superior. We recommend using high quality solvents to remove metal fouling from the bore. Lubricate your rifle generously with high quality firearms lubricants.

Under NO condition should any lubricant containing graphite be used with your rifle. Graphite can encourage rapid corrosion in your rifle.

In addition to cleaning solvents and lubricants, the basic cleaning equipment you will need includes a cleaning rod, a brass bore brush, chamber brushes, a toothbrush, patches, pipe cleaners and the most important item: a lint-free cloth.

NOTE: Do not reverse the direction of the bore brush while it is in the bore.

RIFLE MAINTENANCE

1. Clean outside surface areas with non-abrasive household cleaner.
2. Use gun oil or WD40 on the barrel and wipe dry to restore original look.
3. Install the chamber brush on the cleaning rod, dip it in cleaning solvent and insert into the chamber and locking lugs. Clean by pushing and twisting the cleaning rod.
4. Take the bore brush off the rod and install a swab holder and swab. Apply cleaning solvent to the swab, and then run it through the chamber and out the muzzle brake (if applicable).

5. To remove carbon build up, let the solvent sit then wipe clean. A nylon bore brush may be used with care to remove heavy carbon buildup.

6. Wipe the bore dry by running clean swabs all the way through from the chamber to the muzzle brake. REMEMBER: DO NOT CHANGE DIRECTION OF THE BRUSH WHILE IN THE BORE.

7. Inspect the barrel and stock for cracks, bends or breaks. Be sure the barrel has no obstructions.

8. Lightly lubricate the bore, chamber and outer surface of the barrel.

9. With a lubricated swab, run the rod from the receiver to the muzzle brake (if applicable). Do not over lubricate.

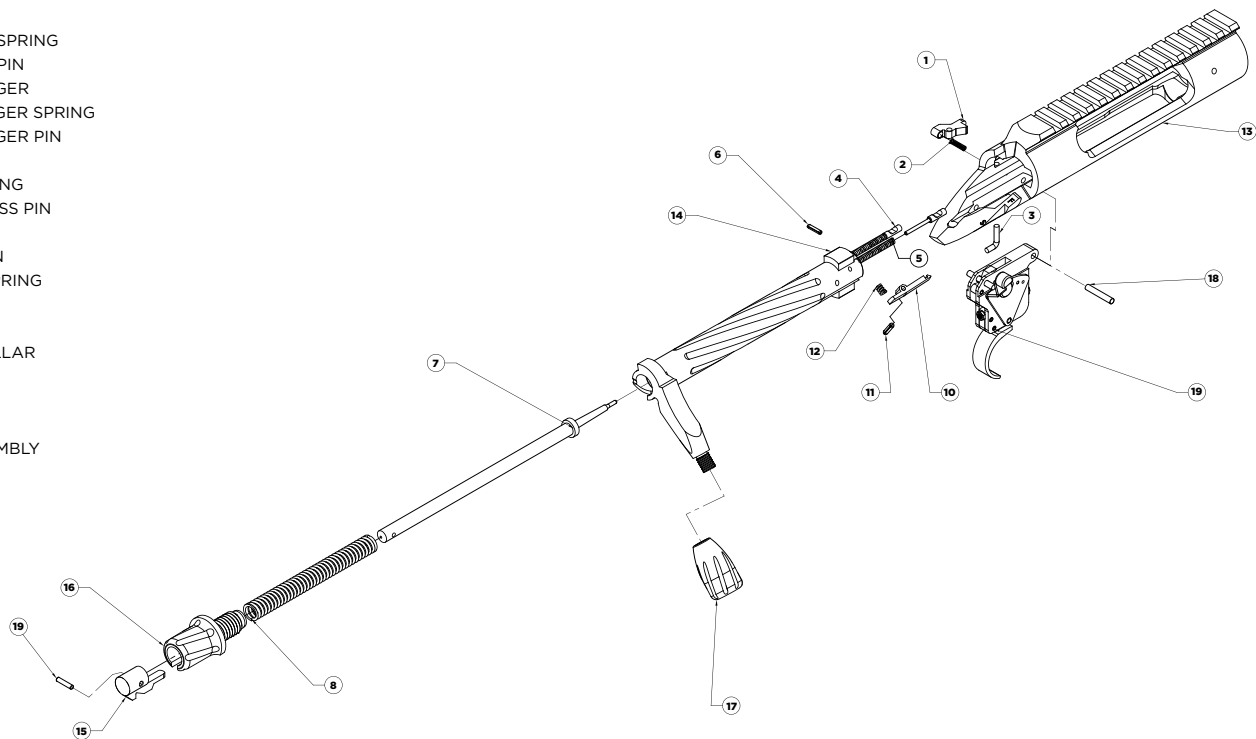
10. Lubricate the locking lugs.

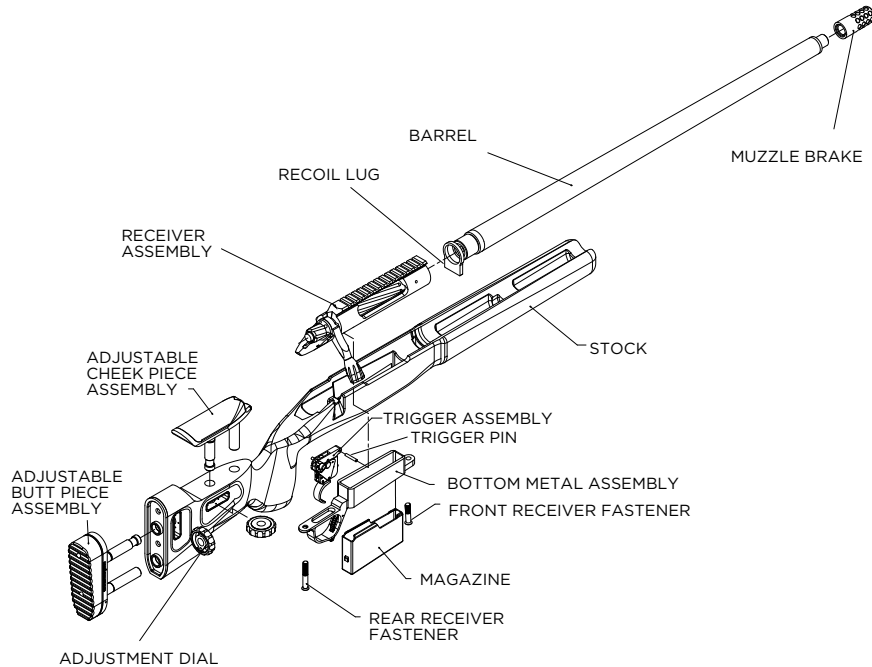
WARNING: LEAD MAY BE PRESENT IN THE FOULING OF A DIRTY RIFLE. AVOID CONTACT WITH IT AND CLEAN HANDS AFTERWARD TO AVOID INGESTING LEAD.

CAUTION: DO NOT REVERSE THE DIRECTION OF THE BORE BRUSH WHILE IT IS IN THE BORE.

WARNING! DO NOT INTERCHANGE BOLTS BETWEEN RIFLES.

- 1- BOLT RELEASE
- 2- BOLT RELEASE SPRING
- 3- BOLT RELEASE PIN
- 4- EJECTOR PLUNGER
- 5- EJECTOR PLUNGER SPRING
- 6- EJECTOR PLUNGER PIN
- 7- FIRING PIN
- 8- FIRING PIN SPRING
- 9- FIRING PIN CROSS PIN
- 10- EXTRACTOR
- 11- EXTRACTOR PIN
- 12- EXTRACTOR SPRING
- 13- RECEIVER
- 14- BOLT
- 15- FIRING PIN COLLAR
- 16- BOLT SHROUD
- 17- BOLT KNOB
- 18- TRIGGER PIN
- 19- TRIGGER ASSEMBLY





MUZZLE BRAKE
BARREL
RECOIL LUG
RECEIVER ASSEMBLY
STOCK
ADJUSTABLE CHEEK PIECE ASSEMBLY
TRIGGER ASSEMBLY
TRIGGER PIN
BOTTOM METAL ASSEMBLY
ADJUSTMENT DIAL
MAGAZINE
REAR RECEIVER FASTENER
FRONT RECEIVER FASTENER

WARRANTY, GUARANTEE AND DISCLAIMER

WARRANTY

Christensen Arms® firearms are warrantied against manufacturing defects for a period of 30 days from point of sale (cosmetic defects excluded). Christensen Arms will repair or replace defective parts or provide refunds at their own discretion. No refunds considered after 30 days. All returns must be completed via RMA process by contacting Christensen Arms.

GUARANTEE

Christensen Arms® firearms come with an MOA accuracy guarantee. Customer is responsible to ensure proper break-in of the firearm during the warranty period, select appropriate ammunition and use proper conditions.

DISCLAIMER

Christensen Arms® delivers a firearm free of defects. Our guarantee requires that firearm owners safely handle, properly break in and properly maintain the firearm. Improper use or owner modifications to the firearm voids the guarantee and warranty.

RETURN AND REFUND POLICY

If you purchased a product from Christensen Arms and are not completely satisfied with it, you can request an RMA (Return Merchandise Authorization) Form from Christensen Arms within 30 days from date of purchase. We do not accept a return if an RMA is not requested from us.

YOU MUST get your RMA from Christensen Arms prior to returning the merchandise and receiving a refund. Include your original invoice (from the Christensen Arms dealer) with your return and a letter explaining the reason for your return. Ship via UPS, Fed Ex or US Mail; Insured and Return Receipt Requested. Credit will be issued for the item, minus full shipping charges and a 15% restocking fee.

1. ALL original materials must be included in your return. The cost of any materials NOT included will be deducted from the refund.
2. Shipping costs are not refundable.
3. Merchandise must be in new resalable condition, in the factory original packaging and must include instructions, owner's manual, and all accessories provided by the manufacturer. Our returns specialist will inspect all returns.

Returns must be received within 14 days from the date the RMA is issued. Partial returns and/or damages will not receive a full credit. Items damaged through "wear and tear" or due to return shipping will receive partial or no credit at the discretion of Christensen Arms.

WARNING: IT IS THE OWNER'S RESPONSIBILITY TO ASSURE THAT ALL PARTS PURCHASED FROM CHRISTENSEN ARMS ARE CORRECTLY FITTED AND INSTALLED. IMPROPER FITTING OR INSTALLATION MAY RESULT IN INJURY, DEATH OR DAMAGE TO THE FIREARM.

Christensen Arms contact information for returns:

Mailing Address:

Christensen Arms
Attn: Customer Service
PO Box 142
Gunnison, UT 84634

Shipping Address:

Christensen Arms
Attn: Customer Service
550 North Cemetery Rd
Gunnison, UT 84634

If you have any questions about the firearm, or have any suggestions for improvements, please contact us at:

Christensen Arms
PO Box 142
Gunnison, UT 84634
Toll Free (888) 517-8855
www.christensenarms.com

LIGHTWEIGHT. ACCURATE. DEPENDABLE.



www.christensenarms.com