

ROSSI

FIREARMS

Owner's Manual

for the Rossi
Rio Grande
Lever Action



READ CAREFULLY BEFORE USING YOUR FIREARM

Warning

Never allow a minor to shoot without adult supervision. Never leave a firearm in the possession of a minor. When shooting with a child, make sure to remain close and safely supervise all activities. If you need to leave the area, take the firearm and the child with you. Always make sure to store firearms and ammunition separately.

Notice:

It is recommended that you record the model number, serial number and date of purchase of your Rossi firearm for future reference. Be sure to retain your store receipt and any other documentation that came with your Rossi.

Model Number _____

Serial Number _____

Date of Purchase _____

ALWAYS KEEP THE MUZZLE POINTED IN A SAFE DIRECTION.

ROSSI

F I R E A R M S

Owner's Manual

Rio Grande
Lever Action



READ CAREFULLY BEFORE USING YOUR FIREARM

This Booklet

The safety warnings in this booklet are important. By understanding the dangers inherent in the use of any firearm, and by taking the precautions described herein, you can enjoy complete safety in the use of your Rossi firearm. Failure to heed any of these warnings may result in serious injury to you or others, as well as severe damage to the firearm or other property.

Dangerous Weapons

SHOTGUNS, RIFLES and PISTOLS are classified as FIREARMS or DANGEROUS WEAPONS and are sold by us with the specific understanding that we are not responsible in any manner whatsoever for their improper or negligent handling or resale under local laws and regulations.

BrazTech shall not be responsible in any manner whatsoever for malfunctioning of the firearm, or for physical injury or property damage, resulting in whole or in part from (1) criminal or negligent discharge, (2) improper or careless handling, (3) unauthorized modifications, (4) defective, improper hand-loaded, or reloaded ammunition, (5) neglect, or (6) other influences beyond our direct and immediate control. This limitation applies regardless of whether liability is asserted on the basis of contract, negligence or strict liability (including any failure to warn). Under no circumstance shall BrazTech be liable for incidental or consequential damages, such as loss of use of property, commercial loss and loss of earnings or profits.

Warning

Securing your firearm may inhibit access to it in a defense situation and result in injury or death.

Warning

Failure to properly secure a firearm may result in injury or death.

Safety Warnings

Not Just For Beginners

Regardless of your familiarity or experience with firearms, you need to study this manual.

The safe handling of firearms requires specialized training, discipline and caution. Firearms, by their nature and intended function, are deadly instruments. Accidental death or serious injury can result if they are handled improperly or carelessly.

Firearms rarely cause accidents. Firearms accidents almost always are caused by a failure to obey the basic rules of gun safety. Unfortunately, experienced shooters seem to violate these rules as frequently as beginners. Thus the basics of safe firearms handling cannot be repeated too often. Read, re-read and practice the basic principles of firearms safety until they become second nature: habits that you don't forget.

If you have any question about your knowledge or ability to use this or any other firearm with complete safety you should seek supervised instruction. Personalized instruction is often available from firearms dealers, gun clubs, state hunter safety programs or police departments in the United States. If none of these sources is accessible, write to the National Rifle Association, 11250 Waples Mill Road, Fairfax, VA 22030 or at www.nra.org. THEY WILL ASSIST YOU.

A person with a firearm in his possession has a full-time responsibility. He must KNOW how to keep and use his firearm safely, and then must always TAKE the precautions necessary -all of them. He cannot guess; he cannot forget. This responsibility is his alone. It cannot be passed off to someone else.

Remember: no firearm can be made accident-proof. A firearm is just a machine, with no judgement of its own. It responds to your actions, whether wise or foolish. The only truly effective safety device is the mind of a cautious shooter who never forgets that a moment's carelessness can produce permanent tragedy.

Firearms Are Not all Alike

Many makes and models of firearms might LOOK nearly the same. However, they differ widely in design and operation, and in the location and function of various controls.

Study this manual thoroughly. Educate yourself on the characteristics and operation of your particular firearm before attempting to handle it. Do not permit others to handle it - unless they also have done so.

You should have an instruction manual for every firearm you own. If you do not, write the manufacturer and obtain one. Most manufacturers will gladly send you one free. If for any reason a manual is not available, visit your public library. Many books have been published which contain detailed information on obsolete or discontinued firearms.

Your knowledge can prevent injuries.

Rossi firearms are designed and made to offer maximum safety when correctly used. However, as with any other weapon, it is not foolproof, and may become very dangerous if the following basic recommendations are not RIGIDLY observed:

Attention

1. **DANGER:** Never, never-ever point any firearm, loaded or unloaded, at anything you do not intend to shoot.
2. **WARNING:** Always treat every firearm as if it were loaded.
3. **NOTICE:** Get instruction from a competent firearms instructor before using any firearm.
4. **SAFETY FIRST:** The safety is only a mechanical device, not a substitute for common sense.
5. **WARNING:** Keep your finger off the trigger until you are actually aiming at the target ready to shoot.
6. **WARNING:** Be certain the firearm is unloaded before cleaning.
7. **WARNING:** Always empty firearms before entering a place where there are people.
8. **SAFETY FIRST:** Never leave a loaded firearm unattended.
9. **SAFETY FIRST:** Store firearms and ammunition separately beyond the reach of children.
10. **WARNING:** Don't test the safety by pulling the trigger while the safety is on unless you are absolutely sure the firearm is empty and you are pointing away from everyone.
11. **SAFETY FIRST:** Be sure of your target and backstop before you shoot.

12. **WARNING:** Firearms and alcohol or drugs don't mix. Do not shoot or handle firearms after consuming beer, wine, other alcoholic beverages or any medications or other drugs that may affect your ability.
13. **WARNING:** Never pull a firearm towards you by the muzzle. Don't climb a tree or cross a fence with a loaded firearm.
14. **DANGER:** Load and unload with the muzzle pointed in a safe direction.
15. **SAFETY FIRST:** If a firearm fails to fire when the trigger is pulled, keep it pointed at the target for at least 30 seconds. Sometimes slow primer ignition will cause a "hang" fire and the cartridge will go off after a short pause.
16. **SAFETY FIRST:** Never shoot at hard flat surfaces or water; bullet may ricochet.
17. **DANGER:** When receiving a firearm always check that it is unloaded (open breech and inspect the chamber), even if you saw it done previously.
18. **DANGER:** Never put your hand over the muzzle of a firearm.
19. **DANGER:** Check ammunition to be sure it is the right size and caliber, and that it is not dented.
20. **SAFETY FIRST:** Use a proper holster and draw only if you intend to shoot.
21. **NOTICE:** Never cock the firearm until you are ready to shoot.
22. **SAFETY FIRST:** Dry firing is bad for this firearm, whether the hammer block is engaged or not.
23. **DANGER:** WHILE HANDLING ANY FIREARM, NEVER ALLOW IT TO POINT AT ANY PART OF YOUR BODY OR AT ANOTHER PERSON. NO HARM SHOULD RESULT IF YOU OBEY THIS RULE, EVEN IF AN ACCIDENTAL DISCHARGE OCCURS.
24. **CAUTION:** If there is any reason to suspect that a bullet is obstructing the barrel, immediately unload the firearm and look through the bore. It is not sufficient to merely look in the chamber.
25. **SAFETY FIRST:** Treat this firearm as a precision instrument.
26. **WARNING:** Old or reloaded ammunition may be dangerous. We recommend against using it.
27. **DANGER:** Don't try to change your firearm's trigger pull, because alteration of trigger pull usually affects sear engagement and may cause accidental discharge.
28. **SAFETY FIRST:** Write to us concerning any items or circumstances which might relate to your safety and the operation of our products.
29. **DANGER:** Never engage a gun lock on a loaded firearm.

Warning

Rossi firearms are manufactured to perform properly with the original parts as designed. It is your duty to make sure any parts you buy are installed correctly and that neither replacements nor originals are altered or changed. Your gun is a complex tool with many parts that must relate correctly to other parts. Putting a gun together wrong or with modified parts can result in a damaged gun, danger and injury or death to you and others through malfunction. Always have a qualified gunsmith work on your gun.

Protect Your Eyes and Ears

Always wear adequate shooting glasses and ear plugs or “ear muff” type protectors whenever you are shooting.

Always make certain that persons close to you are similarly protected.

Unprotected eyes may be injured by powder, gas, carbon residue, lubricant, metallic particles or similar debris which may emanate occasionally from any firearm in normal use.

Without ear protection, repeated exposure to shooting noise may lead to cumulative, permanent hearing loss.



Ammunition

1. Use only high quality, original, factory-manufactured ammunition. Do not use cartridges that are dirty, wet, corroded, bent or damaged. Do not oil cartridges. Do not spray aerosol type lubricants, preservatives, or cleaners directly onto cartridges or where excess spray may flow into contact with cartridges. Lubricant or other foreign matter on cartridges can cause potentially dangerous ammunition malfunctions. Use only ammunition of the gauge for which your firearm is chambered. The proper gauge is permanently engraved on your firearm; never attempt to use ammunition of any other gauge.

Use SAAMI approved non pointed bullets or those designed specifically for the use in tubular magazines such as Hornady LEVERevolution® Ammunition.

2. The use of reloaded, “remanufactured”, hand-loaded, or other non-standard ammunition voids all warranties. Improperly loaded ammunition voids all warranties. Improperly loaded ammunition can be extremely dangerous. Severe damage to the firearm and serious injury to the shooter or to others may result. Always use ammunition that complies with the industry performance standards established by the Sporting Arms and Ammunition Manufacturers Institute, Inc., of the United States, (SAAMI) or the equivalent from other countries.
3. Firearms may be severely damaged and serious injury to the shooter or to others may result from any condition causing excessive pressure inside the chamber or barrel during firing. Excessive pressure can be caused by obstructions in the barrel, propellant powder overloads, or by the use of incorrect cartridges or defectively assembled cartridges. In addition, the use of a dirty, corroded, or damaged cartridge can lead to a burst cartridge case and consequent damage to the firearm and personal injury from the sudden escape of high-pressure propellant gas within the firearm’s mechanism.
4. Immediately stop shooting and check the barrel for a possible obstruction whenever:
 - You have difficulty in, or feel unusual resistance in, chambering cartridge, or
 - A cartridge misfires (does not go off), or
 - The mechanism fails to extract a fired cartridge case, or
 - Unburned grains of propellant powder are discovered spilled in mechanism, or
 - A shot sounds weak or abnormal. In such cases it is possible that a bullet is lodged part way down the barrel. Firing a subsequent shot shell or cartridge into the obstructed barrel can wreck the firearm and cause serious injury to the shooter or to bystanders.

ALWAYS KEEP THE MUZZLE POINTED IN A SAFE DIRECTION.

5. Shot, wads and bullets can become lodged in the barrel.
If the cartridge has been improperly loaded without propellant powder, or if the powder fails to ignite (Ignition of the cartridge primer alone will push the shot and wad or bullet out of the cartridge case, but usually does not generate sufficient energy to expel them completely from the barrel).
6. If there is any reason to suspect that the barrel is obstructed, immediately unload the firearm and look down the bore. It is not sufficient to merely look in the chamber. Shot and/or the wad or the bullet may be lodged some distance down the barrel where it cannot easily be seen.

IF THE BORE IS OBSTRUCTED, DO NOT ATTEMPT TO SHOOT IT OUT BY USING ANOTHER CARTRIDGE OR BY BLOWING IT OUT WITH A BLANK. SUCH TECHNIQUES CAN GENERATE EXCESSIVE PRESSURE, WRECK THE FIREARM AND CAUSE SERIOUS PERSONAL INJURY.

If the obstruction can be removed with a cleaning rod, clear any unburned powder grains from the bore, chamber, and mechanism before resuming shooting. If the obstruction cannot be dislodged by tapping it out with a cleaning rod, take the firearm to a gunsmith.

7. Dirt, corrosion, or other foreign matter on a cartridge can impede complete chambering and may cause the cartridge to burst upon firing. The same is true of cartridges which are damaged or deformed.
8. Do not oil cartridges, and be sure to wipe the chamber clean of any oil or preservative before commencing to shoot. Oil interferes with the friction between shot shell or cartridge case and chamber wall that is necessary for safe functioning, and subjects the firearm to stress similar to that imposed by excessive pressure.
9. Use lubricants sparingly on the moving parts of your firearm. Avoid excessive spraying of any aerosol gun care product, especially where it may get on ammunition. All lubricants and aerosol spray lubricants in particular, can penetrate cartridge primers and cause misfires. Some highly penetrative lubricants can also migrate inside cartridge cases and cause deterioration of the propellant powder; on firing, the powder may not ignite. If only the primer ignites, there is danger that the cartridge may become lodged in the barrel.

Warning

Discharging firearms in poorly ventilated areas, cleaning firearms, or handling ammunition may result in exposure to lead and other substances known to cause birth defects, reproductive harm, and other serious physical injury. Have adequate ventilation at all times. Wash hands thoroughly after exposure.

Danger!!

Warning

Always be sure the breech is fully open before inserting a cartridge. Attempting to insert a cartridge in a partially opened breech may create a hazardous situation and can result in serious injury or death.

Warning

If you experience a problem loading or unloading the rifle barrel, do not attempt to close the gun or it may fire resulting in serious personal injury or death.

1. If a live round is stuck in the barrel: Keep the muzzle pointed in a safe direction. Take extreme care to insure that nothing strikes or comes in contact with any portion of the shell casing.

DANGER: If the shell casing is struck or moved, the primer may ignite firing the cartridge, resulting in serious personal injury or death. Take the rifle to a gunsmith to remove the jammed round.
2. If a fired shell casing is stuck in the barrel: Keep the muzzle pointed in a safe direction. With the muzzle pointed in a safe direction, and while staying clear of the muzzle, drop a .22 caliber cleaning rod down the barrel. The shell casing should drop free. If not, repeat the process. Take care not to damage the barrel. If the shell casing remains stuck, it should be removed by a reputable gunsmith.
3. If a cartridge is stuck in the barrel and you are unsure if it fired or not: Keep the muzzle pointed in a safe direction. Treat it as a live round and handle in accordance with Item 1 above.

Remember

The danger of personal injury or death associated with cartridges, fired or unfired, becoming stuck in a firearm can be avoided by using new, clean, factory loaded ammunition and never forcing ammunition into a chamber. **If you have to force ammunition into the chamber, something is wrong! Stop! And take the rifle to a qualified gunsmith.**

Manual Safety

These firearms are manufactured with a manual safety - USE IT!



Notice

Your firearm is equipped with the manual safety shown above. A manual safety is no substitute for safe, smart firearm handling.

Make the Firearm Safe – With one finger, push the manual safety from the left side of the receiver, until the **RED** side of the manual safety is completely hidden inside the receiver and the **GREEN** side of the manual safety is completely exposed on the right side of the receiver.

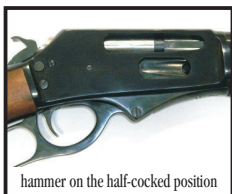
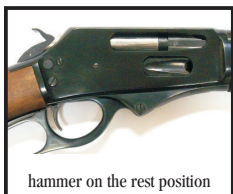
THE SAFETY LEVER CAN BE PUSHED FROM LEFT TO RIGHT TO THE SAFE POSITION WHEN THE HAMMER IS IN THE REARMOST FULLY COCKED POSITION OR IS IN THE HALF-COCKED POSITION. HALF-COCKED IS A POSITION BETWEEN THE REST AND THE FULLY COCKED POSITIONS. TO REACH THE HALF-COCKED POSITION SLOWLY PULL THE HAMMER FROM ITS REST POSITION TILL YOU HEAR THE CHARACTERISTIC SOUND OF A COUPLING.

NOTE: WHEN THE HAMMER IS HALF-COCKED THE TRIGGER IS BLOCKED AND CANNOT BE ACTIVATED. NOTE: THIS POSITION IS NO SUBSTITUTE FOR THE MANUAL SAFETY NOR FOR A SAFE, SMART FIREARM HANDLING.

If you wish to safely decock the hammer from the fully cocked position, engage manual safety as described above and with the hammer under the full control of the user and **keeping the muzzle pointed in a safe direction**, holding and controlling the hammer with the thumb, pull the trigger, then slowly and carefully let the hammer move forward just a little bit, then release the trigger and continue moving the hammer slowly until it reaches the half-cocked position.

The manual safety can be disengaged when the hammer is either half-cocked or fully cocked. To disengage manual safety, push the manual safety from the right side of the receiver, until the **GREEN** side of the manual safety is completely hidden inside the receiver, and the **RED** side of the manual safety is completely exposed on the left side of the receiver.

KEEP THE MANUAL SAFETY ON THE SAFE POSITION UNTIL YOU ARE READY TO SHOOT



ALWAYS KEEP THE MUZZLE POINTED IN A SAFE DIRECTION.

De-Cocking

If the firearm is fully cocked and the user desires to place the hammer in the rest position, then the hammer must be under full control of the user.

KEEP THE MUZZLE POINTED IN A SAFE DIRECTION. PUT THE SAFETY LEVER ON (**GREEN** side exposed). WHILE CAREFULLY HOLDING AND CONTROLLING THE HAMMER WITH THE THUMB, PULL THE TRIGGER, SLOWLY AND CAREFULLY LET THE HAMMER MOVE FORWARD APPROXIMATELY 1/2" AND RELEASE THE TRIGGER. CONTINUE TO LET THE HAMMER GOES DOWN UNTIL IT IS RESTING ON THE HALF COCKED POSITION.

Warning

You should practice this method with an empty firearm until you are completely familiar and comfortable with this procedure.

How To Load Your Firearm

Warning

Before loading this or any firearm, always check the bore to be sure it is free of grease, oil and or any obstruction. **BE SURE** the chamber is empty and the entire barrel is clear. Open the breech and visually check the full length of the barrel for any obstruction. Failure to do so may damage your firearm and can result in accidental death or serious injury.

Use SAAMI approved non pointed bullets or those designed specifically for the use in tubular magazines such as Hornady LEVERevolution® Ammunition.

Warning

Do not rely on the color or size of a cartridge to determine gauge or bore. Always check the box and the headstamp of the actual cartridge **BEFORE** loading. Failure to do so may damage your firearm and can result in accidental death or serious injury.

This firearm must be loaded through the loading port located on the right side of the receiver. Note that the loading port is covered by a loading gate. With the muzzle pointed in a safe direction, certify that the hammer is not cocked and the finger lever is on its rest position (action fully closed, finger lever close to the lower tang). Slowly and carefully push the cartridge against the loading gate to make it open and keep pushing the cartridge until it is completely inside the receiver.

It is possible to load the firearm with any quantity of cartridges from one up to the maximum allowed on each model.



Notice

There are a few models with the barrel ported. These ports can emit sparks and hot gases when the firearm is discharged.

Warning

Keep hands, face and rest of the body well clear of these ports when discharging the firearm. Failure to do so can create hazardous situation and may result in accidental death or serious injury.

Warning

Always make sure the area directly over the ports is clear before discharging the firearm. Failure to do so can create hazardous situation.

Adjusting Sights

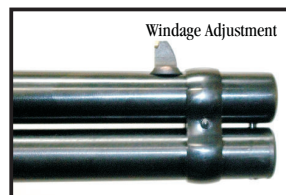
To adjust Sights:

1. Check the firearm to ensure it is unloaded and the muzzle is pointed in a safe direction.



2. Elevation Adjustment:

To adjust elevation on the rear sight, pull the rear sight upward using one hand and with the other one move the elevator forward to make the sight shorter or rearward to make the sight taller. The taller you set the rear sight the taller the point of impact will be.



3. Windage Adjustment:

To make the windage adjustment simply move the front sight left or right by hitting it carefully with a brass or plastic hammer.

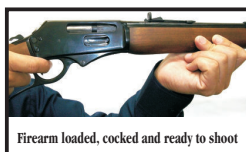
If the shot is moved left from the target move the front sight right. If the shot is moved right from the target move the front sight left.

To Fire

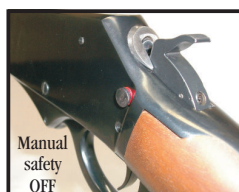
Warning

Always be sure the firearm is pointed at the target and away from other people, buildings and vehicles before firing. Do not fire into water or any other surfaces that allow ricochet.

With the gun pointed at the target and the magazine tube loaded, swing the finger-lever forward then back. This movement will eject a cartridge that may be on the chamber and make the action ready for shooting. The gun is now loaded and cocked.



With the action completely closed, aim at the target (carefully read all warnings and instructions on this manual) set the manual safety to the fire position (**RED** side exposed) then pull the trigger to fire the firearm.



Warning

Be careful not to accidentally pull the trigger when swinging back the finger-lever, and keep the manual safe on the safety position until you are ready to pull the trigger. Failure to do so may result in accidental death or serious injury.

When finished shooting, immediately set the manual safety to the safe position (**GREEN** side exposed).

Unloading Your Firearm

If you want to unload your firearm without shooting, set the manual safety on (**GREEN** side exposed) and consecutively swing the finger-lever forward and back **WITHOUT PULLING THE TRIGGER** to eject the cartridges. Keep doing this until the firearm is empty (no cartridges comes out after swinging the finger-lever).

Warning

Always make sure the breech bolt will open in a safe direction and that the unfired cartridges will fall on a safe place. Cartridges ejecting from the chamber can cause injury.

ALWAYS INSPECT THE BARREL AND BORE VISUALLY TO MAKE SURE THAT THE CHAMBER IS EMPTY.

ALWAYS KEEP THE MUZZLE POINTED IN A SAFE DIRECTION.

What To Do If Firearm Fails To Fire

1. Misfires – If you squeeze the trigger and the cartridge does not fire, remain in the shooting position and wait 30 seconds. Then, swing the lever-finger as previously described. This will eject the misfired cartridge from the gun.
2. Underpowered cartridge – An underpowered cartridge is unusual if the ammunition is fresh, clean, and factory loaded. However, if you hear an unusual sound or low report, you should stop immediately, wait a full 30 seconds and check, visually, both the chamber and bore to make sure there is no obstruction.

How to Clean Your Firearm

Warning

Before cleaning your firearm, be certain that it is completely unloaded and the bore and chamber are clear.

Clean the exterior of your firearm using a flannel with a light coat of oil. Clean the bore and barrel by using any standard rifle cleaning rod, brass bore brush and cleaning patches. First run the brass brush through the barrel several times with powder solvent. Then run clean patches with the rod through the barrel until the patches come out clean. Then apply a light coating of oil on a clean patch and run it through the chamber and barrel. Then put a light coat of oil on all metal surfaces.

Warning

Further disassembly of the firearm is not recommended and should only be attempted by a qualified gunsmith.

Take Down Instructions

If you wish to “take down” your forearm for transport or storage, proceed as follows:

1. Make sure firearm is unloaded.
2. Clean you firearm as described above.

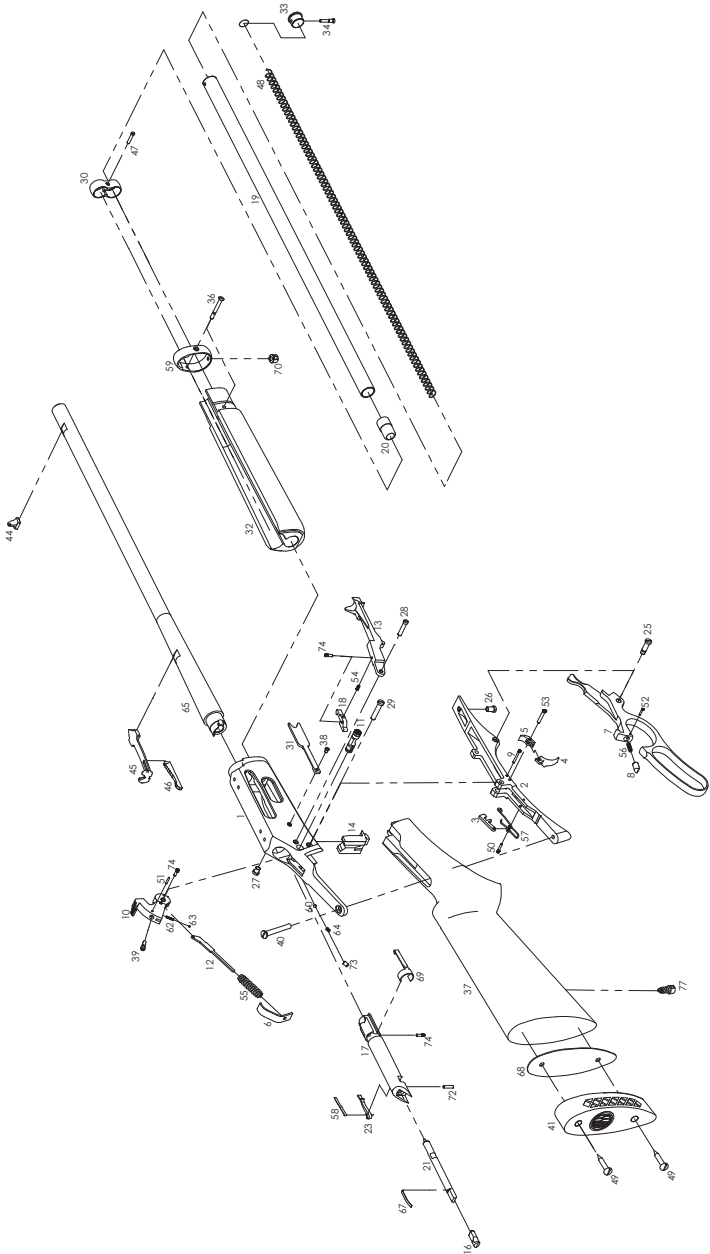
Use a very thin coat of light oil during below freezing conditions. Condensation droplets will form soon after the firearm is brought into a warm room, or it may become wet during inclement weather. In any case, all moisture should be removed. Exterior metal finishes may be wiped down with a slightly oiled cloth. For long term storage, lightly oil the bore, barrel and action with gun oil. Your firearm should be completely unloaded and stored in a dry area. Never store your firearm in a carrying case.

Repair Instructions

Your firearm has been designed, engineered and manufactured in accordance with Rossi's rigid quality control standards. However, any mechanical device may occasionally require adjustment or repair.

Drawing and Parts List

(This is intended as a generic guide and not a specific model or guide to assembly)



ALWAYS KEEP THE MUZZLE POINTED IN A SAFE DIRECTION.

Drawing and Parts List

(This is intended as a generic guide and not a specific model or guide to assembly)

1	Receiver	37	Stock
2	Trigger guard plate	38	Loading spring screw
3	Trigger safety block	39	Hammer lock
4	Trigger	40	Tang screw
5	Sear	41	Recoil pad
6	Hammer spring adjusting plate	44	Front sight
7	Finger lever	45	Rear sight
8	Finger lever plunger	46	Elevator
9	Trigger guard plate latch pin	47	Magazine ring screw
10	Hammer	48	Magazine spring
11	Manual safety	49	Recoil pad screw
12	Hammer strut	50	Trigger safety block pin
13	Carrier	51	Pino Limitador da Trava do cão
14	Locking bolt	52	Finger lever plunger pin
16	Firing pin, rear	53	Trigger and sear pin
17	Breech bolt	54	Carrier rocker spring
18	Carrier rocker	55	Hammer spring
19	Magazine tube	56	Finger lever plunger spring
20	Magazine tube follower	57	Trigger safety block spring
21	Firing pin, front	58	Ejector spring
23	Ejector	59	Forearm tip
25	Finger lever screw	60	Locking ball
26	Trigger guard plate screw	62	Hammer locking spring
27	Trigger guard plate support screw	63	Hammer locking ball
28	Carrier screw	64	Manual safety spring
29	Hammer screw	67	Firing pin spring
30	Magazine ring	68	Recoil pad base
31	Loading spring	69	E tractor
32	Forearm	70	pper sling swivel
33	Magazine plug	71	Lower sling swivel
34	Magazine plug screw	72	Firing pin, rear screw
35	Forearm tip	73	Manual safety screw
36	Forearm tip screw	74	Hammer strut pin

Parts

All firearms require periodic maintenance and inspection which may reveal a need for adjustment or repair. Have your firearm checked by a competent gunsmith, even if it seems to be working well, since breakage, improper functioning, undue wear, or corrosion of some components may not be apparent from external examination. If you notice ANY mechanical malfunction, do NOT continue to use the firearm. UNLOAD the firearm and take it to a competent gunsmith immediately

Our Service Department maintains a full complement of replacement parts for our firearms of current manufacture. Even though most gunsmiths have the knowledge, training and ability to make the necessary repairs to your firearm, the skill and workmanship of any particular gunsmith is totally beyond our control. Should your firearm ever require service, we strongly recommend that you return it to BrazTech. Follow the instructions outlined on the warranty card included with your firearm. Remember, unauthorized adjustments or parts replacement can void your warranty. It is the responsibility of the purchaser to be absolutely certain that any parts ordered from BrazTech are of the correct type and are properly fitted and installed by a competent person. THIS FIREARM IS A PRECISION MECHANISM AND THE IMPROPER FITTING OF PARTS OR IMPROPER MECHANICAL ADJUSTMENT MAY RESULT IN A DANGEROUS MALFUNCTION, DAMAGE TO THE FIREARM, AND POSSIBLE SERIOUS INJURY TO THE SHOOTER OR TO OTHERS. Therefore, the purchaser and/or installer of parts must accept full responsibility for the correct adjustment of and function of the firearm after such installation has been made or attempted.

Rossi Long Gun Repair Policy

What does this policy cover?

This policy covers any service and repair needed by any product manufactured by Rossi, and imported by Braztech, Int'l. or manufactured in the United States by Braztech, Int'l.

How long does coverage last?

This policy is in effect for one year from the date of original purchase.

Please note you must complete and return the card in this manual within 3 months of purchase for this policy to be in effect.

What will we do?

BrazTech will service and/or repair all covered products free of charge.

What does this policy not cover?

This policy does not cover stock and forend, sights, accessories, or cosmetic defects, or damage caused by customer abuse at any time. Modifications to the firearm may void this repair policy. This express limited repair policy is the only warranty on this product. This product is sold "as is" and has no implied warranties of merchantability or fitness for a particular purpose. There are no warranties which extend beyond the description on the face hereof.

How do I get service?

To simplify repair and service, Rossi products imported by Braztech Int'l are serviced and repaired by Braztech. Questions regarding the products of either company can be directed to Braztech in Miami, Florida at 305-474-0401, or in writing to: 16175 N.W. 49th Avenue, Miami, FL 33014 in care of the Consumer Affairs Department.

In order to obtain service or repair, describe the problem in writing and send the gun to Braztech at the above address, insured and pre-paid with the written description of the problem enclosed and the receipt indicating the initial date of purchase.

FIREARMS MUST BE SHIPPED UNLOADED. Double check the chamber of your firearm before shipping if firearms are sent to Braz Tech in a loaded condition, we are required by law to notify the federal authorities. **DO NOT INCLUDE AMMUNITION** with your firearm. This is a violation of federal law.

DO NOT include telescopic sights; custom grips, holsters, ammunition or other accessories with any firearm shipped to us.

When shipping Matched Pair or Matched Set models for repair, all barrels must be included with the firearm. Be sure to repackage the additional barrels in their shipping tubes to prevent damage to the finish and to the stocks during shipment. BrazTech is not responsible for shipment damage.

Our Customer Service Department will contact you by mail advising you when to expect your gun back. We will ship guns serviced because of defect in materials or workmanship insured and pre-paid. There will, of course, be no charge for parts or labor if the repair work performed is covered by this repair policy.

How does State Law apply?

This policy gives you specific legal rights and you may also have other rights which vary from state to state.

BrazTech/Rossi reserves the right to modify, change or discontinue products, pricing, calibers or features at any time without prior notice.



www.rossiusa.com

A WORD TO THE WISE

**MOST GUN ACCIDENTS HAPPEN BECAUSE THE
SHOOTER CARELESSLY VIOLATES THE SINGLE
MOST IMPORTANT RULE OF SAFE GUN
HANDLING:**

**ALWAYS KEEP THE MUZZLE POINTED
IN A SAFE DIRECTION!**

IMPORTANT: DO NOT DISCARD

**KEEP THIS MANUAL WITH YOUR FIREARM.
UPON CHANGE OF OWNERSHIP TRANSFER
THIS MANUAL WITH THE FIREARM.**

© Copyright 2010 Braztech International, L.C.
Rossi is a registered mark of Amadeo Rossi, S.A.

The information in this manual is provided as guidelines and directions for the safe use of your firearm. Braztech and/or Rossi can not be held responsible for the misuse, illegal or negligent use of our products. We strongly encourage all firearms owners to observe all firearms safety rules.

Keep this and all firearms and ammunition away from unsupervised children.
Firearms safety is everyone's responsibility

READ CAREFULLY BEFORE USING YOUR FIREARM